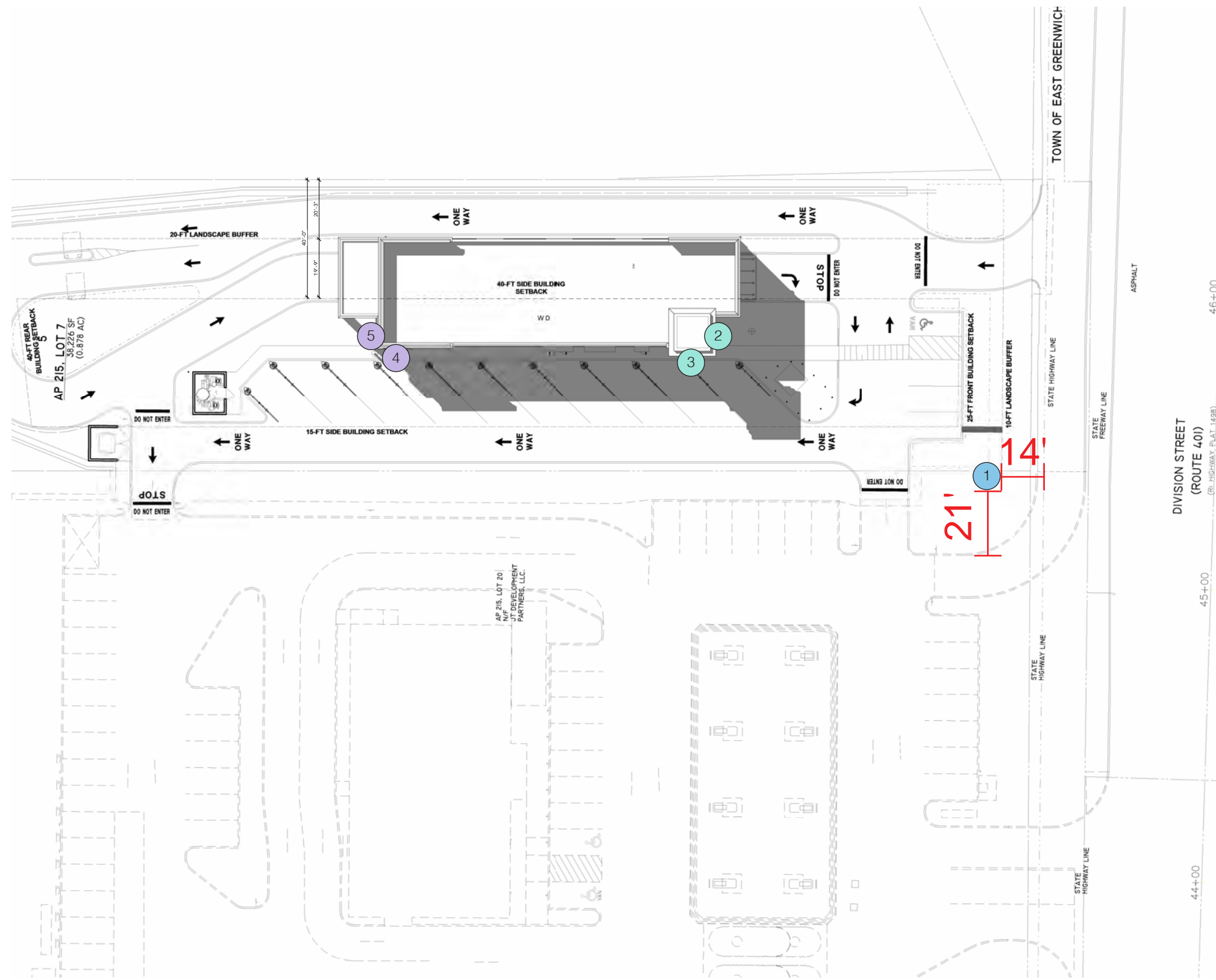


Russel Speeder's Car Wash | 1119 Division St, Warwick, RI, USA | Design Development | April 04, 2023





Sign Type Key	
1	Pylon Sign - Page 1A
2	Internally Illuminated Wall Sign - Page 2A
3	Internally Illuminated Wall Sign - Page 2A
4	Internally Illuminated Wall Sign - Page 3A
5	Internally Illuminated Wall Sign - Page 3A



Russel Speeder's
Car Wash

1119 Division St,
Warwick, RI, USA

Project: 8909
Russel Speeder's Car Wash

Sales: Stephanie Poyant
Date: 04.24.23
Designer: TSP

Note:
This is an original unpublished drawing created by Poyant Signs, Inc. It is submitted for your personal use in connection with a project being planned for you by Poyant Signs, Inc. It is not to be shown to anyone outside your organization, nor is it to be reproduced, copied or exhibited in any fashion until transferred.

Revisions:

Revision: 04/25/23 - sing size

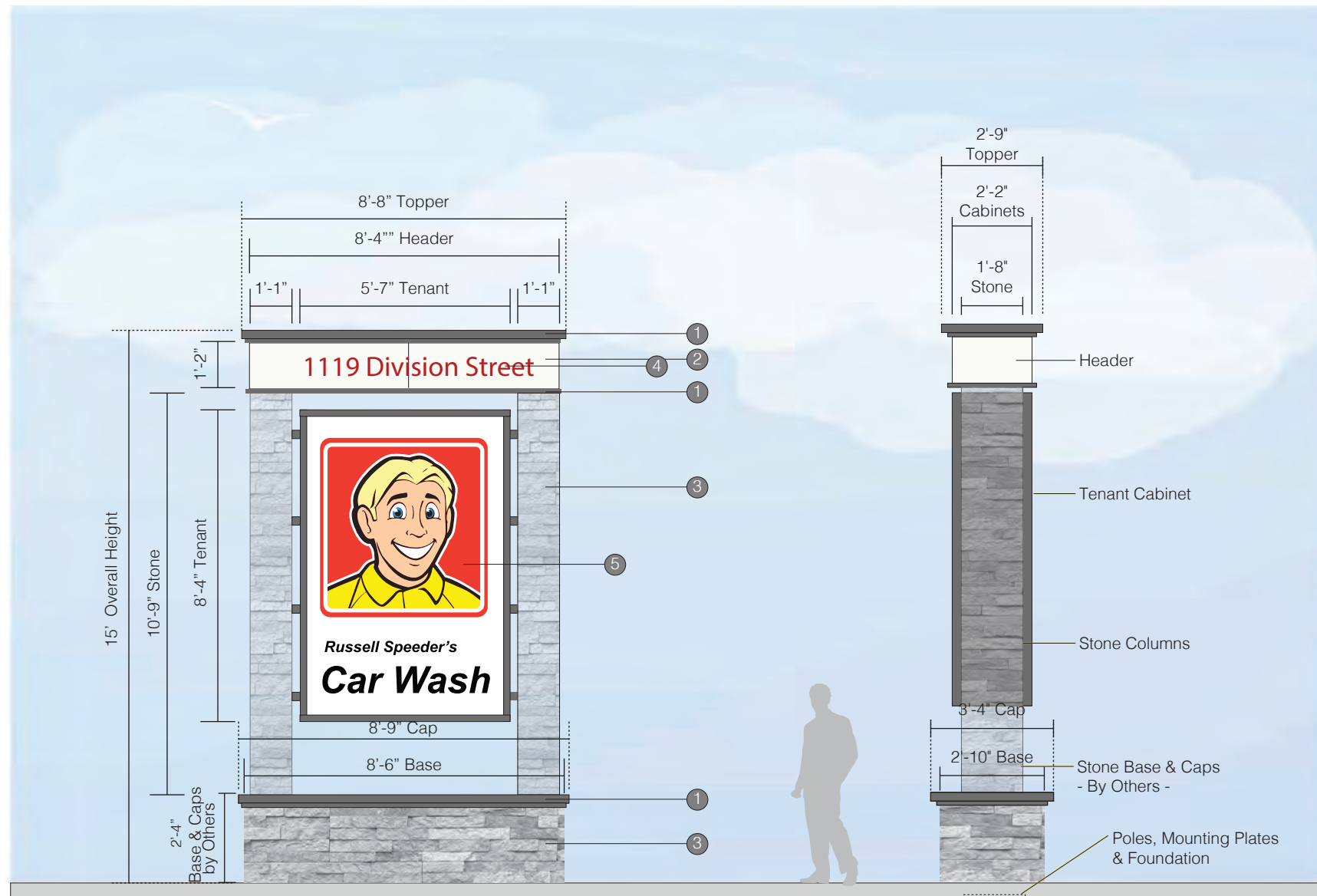
This sign is intended to be installed in accordance with the requirements of Article 600 of the National Electrical Code and / or other applicable local codes. This includes proper grounding and bonding of the sign.

Approved By:

Date:

Site Plan
#22431

A Site Plan - Plan View
Not to Scale



A Sign Elevation - Front View
Scale: 1/4"=1'-0"

B Sign Elevation - Side View
Scale: 1/4"=1'-0"

Specifications

Qty = 1

46.5 Sq Ft

Double Faced Internally Illuminated Pylon Sign

Header

- Internally Illuminated Frame with aluminum bleedfaces
- Push thru graphics
- 4" x 4" x 1/8" Alum tube & 2" x 2" x 1/8" Alum tube decorative elements

Tenant Cabinet

- Internally Illuminated Type 1 Wide Fab Cabinet with lexan faces
- Grounding Rods
- Secured to poles using 4" x 4" x 3/16" Steel Tubes Running Horizontally

Stone Columns

- Fabricated angle frame with 1/2" thick cement board
- Stone provided & installed by others - after install

Poles & Foundation

- (Qty:2) 8" x 8" x 3/8" Steel Poles with mounting plates
- (Qty:1) Per Pole 20" x 20" x 1/2" Thick Steel Mounting Plate
- Poles to be plate mounted using (Qty:4) 1 1/4" Dia Anchor Bolts @ 20" Min Embedment
- (Qty:1) 4'-0"D x 14'-0"W x 8'-0"WL Direct burial foundation - By Others
- Foundation to have #4 rebar @ 12"OC top & bottom
- Rebar Cage & Fully Assembled Anchor Bolts by Poyant
- Mounting plates to be concealed 6" below grade & backfilled with soil

Electrical

- 120V Primary Electrical to be fed thru foundation, thru conduit
- Electrical to be fed thru mounting plate, thru pole & into sign cabinet

Stone Base & Caps - By Others

- Provided & Installed by Others after sign is installed
- No Frame to be provided by Poyant

Provided By Others

- (Qty:1) 4'-0"D x 14'-0"W x 8'-0"WL Direct burial foundation
- 2" Thick Stone Veneer & Stone Base - Provided & Installed by others
- Primary Electrical - Min of (Qty:2) 20 amp, 120 circuits to be provided in conduit
- EMC's require their own dedicated circuit
- Customers electrician to provide best pathway to termination for grounding rod

Verify in Field (VIF)

- Confirm sign will fit in location as shown, no sloped grade, no overhead wires
- Photo of install location if possible

- See Page SP for Site Plan

Colors & Materials

- 1 Paint
Dark Gray; Satin Finish
- 2 Paint
White; Satin Finish
- 3 2" Thick Stone Veneer **By Others**
- 4 Translucent Vinyl - Push Thrus Only & EMC Faces
Dark Red 3M 3630-73
- 5 Digital Print
Digitally Printed Translucent Vinyl
- UV Laminate & Kiss Cut around Graphics
- Qty 2



Russel Speeder's
Car Wash

1119 Division St,
Warwick, RI, USA

Project: 8909
Russel Speeder's Car Wash

Sales: Stephanie Poyant
Date: 04.24.23
Designer: TSP

Note:
This is an original unpublished drawing created by Poyant Signs, Inc. It is submitted for your personal use in connection with a project being planned for you by Poyant Signs, Inc. It is not to be shown to anyone outside your organization, nor is it to be reproduced, copied or exhibited in any fashion until transferred.

Revisions:

Revision: 04/25/23 - sing size

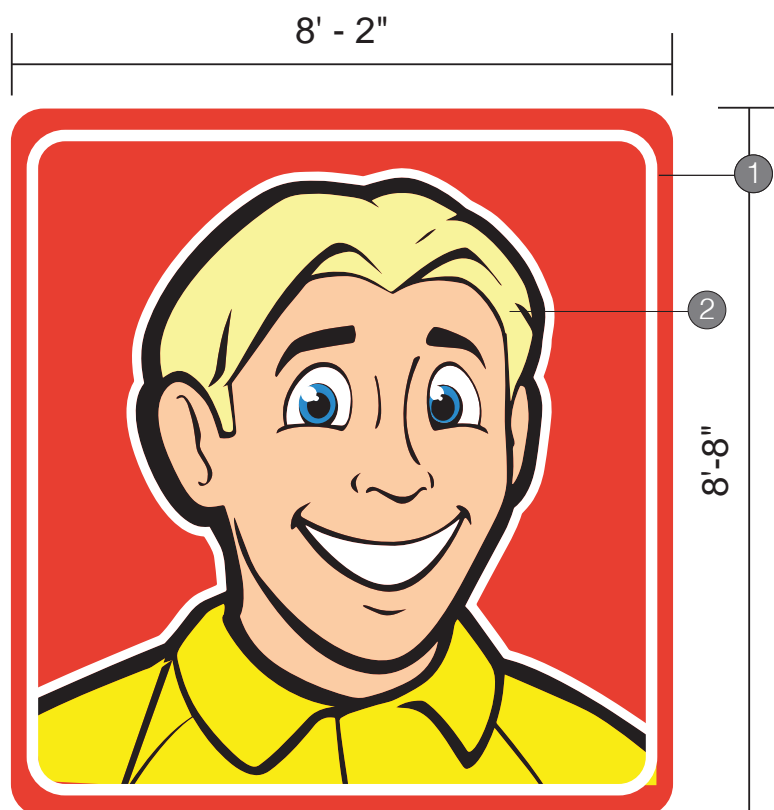


This sign is intended to be installed in accordance with the requirements of Article 600 of the National Electrical Code and / or other applicable local codes. This includes proper grounding and bonding of the sign.

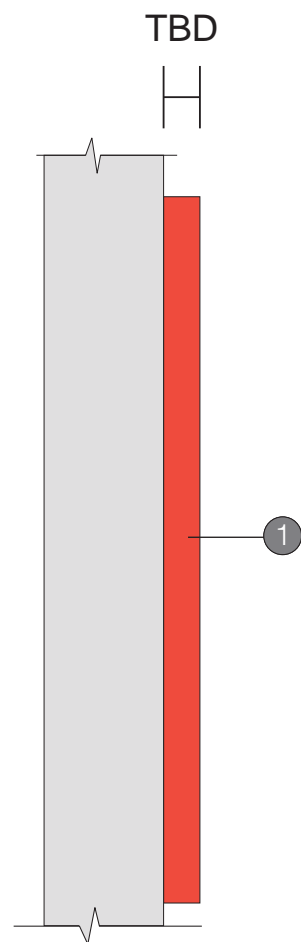
Approved By:

Date:

Pylon Sign



A Sign 2 and 3 Elevation - Front View
Scale: 1" = 1'-0"



B Sign 2 and 3 Elevation - Side View
Scale: 1" = 1'-0"

Specifications



Qty = 2

71.3 Sq Ft

Internally Illuminated Wall Sign

Verify in Field (VIF)
- Confirm signage will fit on fascia as shown

Colors & Materials

- 1**  Translucent Vinyl
Red 3M 3630-33
- 2**  Digital Print
Digitally Printed Translucent Vinyl
- UV Laminate & Kiss Cut around Graphics



I N C.

A Poyant Company

Russel Speeder's
Car Wash

1119 Division St,
Warwick, RI, USA

Project: 8909
Russel Speeder's Car Wash

Sales: Stephanie Poyant
Date: 04.24.23
Designer: TSP

Note:
This is an original unpublished drawing created by Poyant Signs, Inc. It is submitted for your personal use in connection with a project being planned for you by Poyant Signs, Inc. It is not to be shown to anyone outside your organization, nor is it to be reproduced, copied or exhibited in any fashion until transferred.

Revisions:

Revision: 04/25/23 - sing size



This sign is intended to be installed in accordance with the requirements of Article 600 of the National Electrical Code and / or other applicable local codes. This includes proper grounding and bonding of the sign.

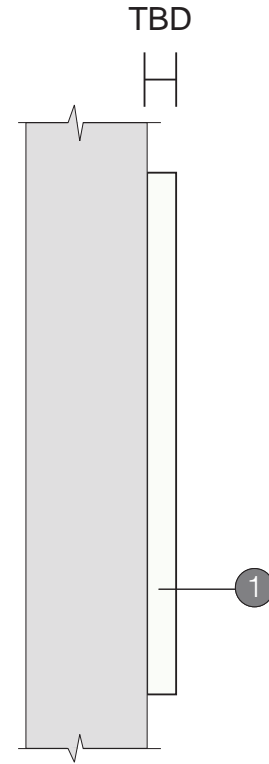
Approved By:

Date:

Internally Illuminated Wall Sign



A Sign Elevation - Sign 4 and 5 Front View
Scale: 3/4" = 1'-0"



B Sign Elevation - Sign 4 and 5 Side View
Scale: 3/4" = 1'-0"

Specifications

Qty = 2

51.9 Sq Ft

Internally Illuminated Wall Sign

Verify in Field (VIF)
- Confirm signage will fit on fascia as shown

Colors & Materials

- 1 Translucent Vinyl
White 3M 3730-20L
- 2 Digital Print
Digitally Printed Translucent Vinyl
- UV Laminate & Kiss Cut around Graphics



Russel Speeder's
Car Wash

1119 Division St,
Warwick, RI, USA

Project: 8909
Russel Speeder's Car Wash

Sales: Stephanie Poyant
Date: 04.24.23
Designer: TSP

Note:
This is an original unpublished drawing created by Poyant Signs, Inc. It is submitted for your personal use in connection with a project being planned for you by Poyant Signs, Inc. It is not to be shown to anyone outside your organization, nor is it to be reproduced, copied or exhibited in any fashion until transferred.

Revisions:

Revision: 04/25/23 - sing size



This sign is intended to be installed in accordance with the requirements of Article 600 of the National Electrical Code and / or other applicable local codes. This includes proper grounding and bonding of the sign.

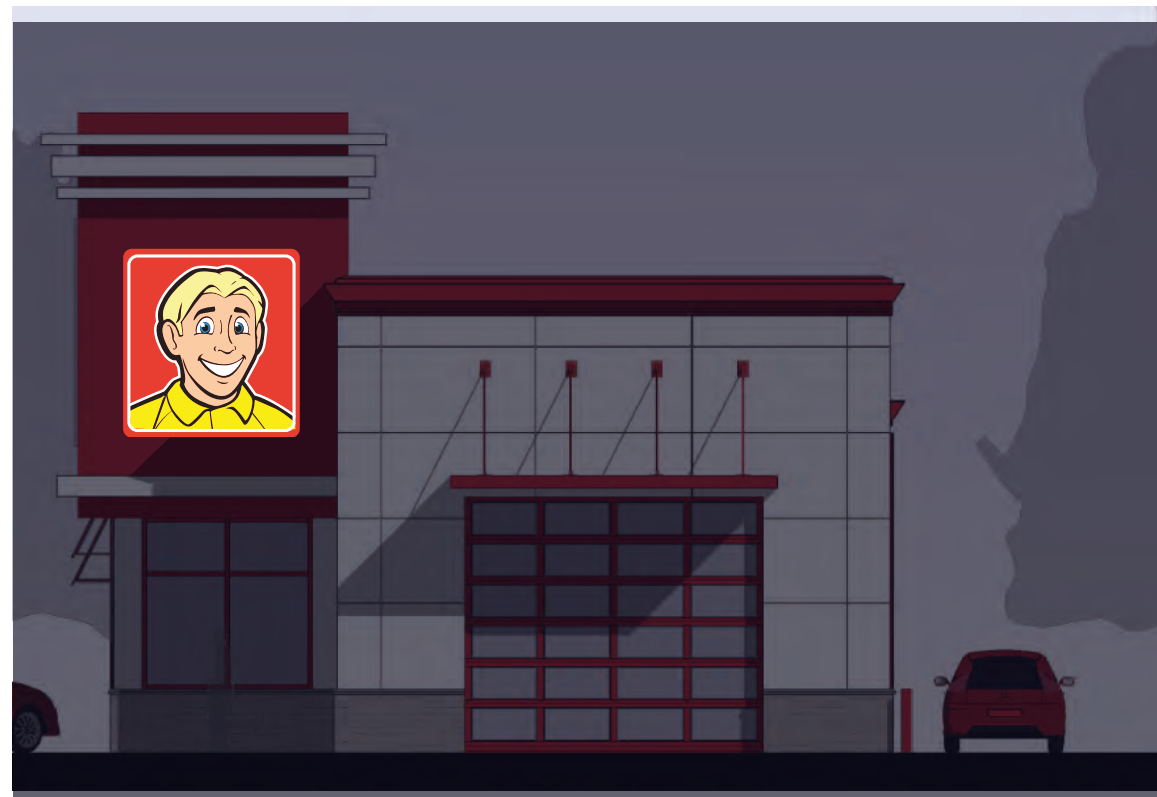
Approved By:

Date:

Internally Illuminated Wall Sign



A South Elevation - Sign 2 Proposed by Day
Not to Scale



B South Elevation - Sign 2 Proposed by Night
Not to Scale

Specifications

Qty = 1

71.3 Sq Ft

Internally Illuminated Wall Sign

- South Elevation

Total length - 36'
Allowed - 72 SQ FT
Proposed - 71.3 FT

Verify in Field (VIF)
- Confirm signage will fit on fascia as shown



Russel Speeder's
Car Wash

1119 Division St,
Warwick, RI, USA

Project: 8909
Russel Speeder's Car Wash

Sales: Stephanie Poyant
Date: 04.24.23
Designer: TSP

Note:
This is an original unpublished drawing created by Poyant Signs, Inc. It is submitted for your personal use in connection with a project being planned for you by Poyant Signs, Inc. It is not to be shown to anyone outside your organization, nor is it to be reproduced, copied or exhibited in any fashion until transferred.

Revisions:

Revision: 04/25/23 - sing size



This sign is intended to be installed in accordance with the requirements of Article 600 of the National Electrical Code and / or other applicable local codes. This includes proper grounding and bonding of the sign.

Approved By:

Date:

Internally Illuminated Wall Sign

Specifications

Qty = 2 123.2 Sq Ft

Internally Illuminated Wall Sign

- West Elevation

Total length - 135' - 6"
Allowed - 270 SQ FT
Proposed - 71.3 SQ FT (Sign 3) + 51.9 SQ FT (Sign 4) = 123.2 SQ FT

Verify in Field (VIF)
- Confirm signage will fit on fascia as shown



Russel Speeder's
Car Wash

1119 Division St,
Warwick, RI, USA

Project: 8909
Russel Speeder's Car Wash

Sales: Stephanie Poyant
Date: 04.24.23
Designer: TSP

Note:
This is an original unpublished drawing created by Poyant Signs, Inc. It is submitted for your personal use in connection with a project being planned for you by Poyant Signs, Inc. It is not to be shown to anyone outside your organization, nor is it to be reproduced, copied or exhibited in any fashion until transferred.

Revisions:

Revision: 04/25/23 - sing size



This sign is intended to be installed in accordance with the requirements of Article 600 of the National Electrical Code and / or other applicable local codes. This includes proper grounding and bonding of the sign.

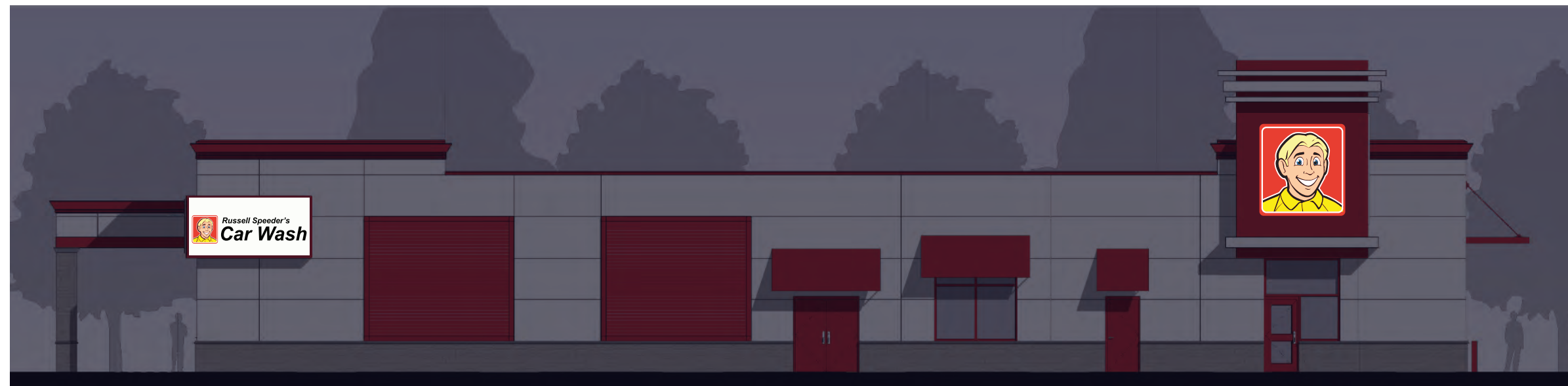
Approved By:

Date:

Internally Illuminated Wall Sign



A West Elevation Photo Comp - Sign 3 and 4 Proposed by Day
Not to Scale



B West Elevation Photo Comp - Sign 3 and 4 Proposed by Night
Not to Scale



A North Elevation Photo Comp - Sign 5 Proposed by Day
Not to Scale



B North Elevation Photo Comp - Sign 5 Proposed by Night
Not to Scale

Specifications

Qty = 1

51.9 Sq Ft

Internally Illuminated Wall Sign

- North Elevation

Total Length - 36'
Allowed - 72 SQ FT
Proposed - 51.9 SQ FT

Verify in Field (VIF)
- Confirm signage will fit on fascia as shown



A Poyant Company

Russel Speeder's
Car Wash

1119 Division St,
Warwick, RI, USA

Project: 8909
Russel Speeder's Car Wash

Sales: Stephanie Poyant
Date: 04.24.23
Designer: TSP

Note:
This is an original unpublished drawing created by Poyant Signs, Inc. It is submitted for your personal use in connection with a project being planned for you by Poyant Signs, Inc. It is not to be shown to anyone outside your organization, nor is it to be reproduced, copied or exhibited in any fashion until transferred.

Revisions:

Revision: 04/25/23 - sing size



This sign is intended to be installed in accordance with the requirements of Article 600 of the National Electrical Code and / or other applicable local codes. This includes proper grounding and bonding of the sign.

Approved By:

Date:

Internally Illuminated Wall Sign