

© Copyright 2020  
 All original artwork and design is the sole property of MainLine Graphics, LLC, and all rights are reserved until services rendered to client are paid in full.

**Wood Partners**  
**Alta City Centre**

21 Executive Drive  
 Stoneham, MA 02180

Designer/Project Manager  
**T Sullivan**

Production will not begin without a signed and checked approval on all final layouts.

Please proof this layout carefully, check the appropriate box, sign and date.

Return layout(s) directly to your Project Manager or info@MLGsigns.com

- Approved, as is
- Approved, with changes
- Requires New Layout
- Rejected

Customer Signature Required

Date Signed

- COLORS & FINISHES**
- PMS 7527C
  - PMS 2462C
  - PMS 7549C
  - Black
  - Clear Coat

colors shown are representation only

**SPECIFICATIONS**

**Cabinet:** 6" Deep Fabricated aluminum. aluminum face.

**Panels:** 1 1/2" deep, fabricated aluminum panel.

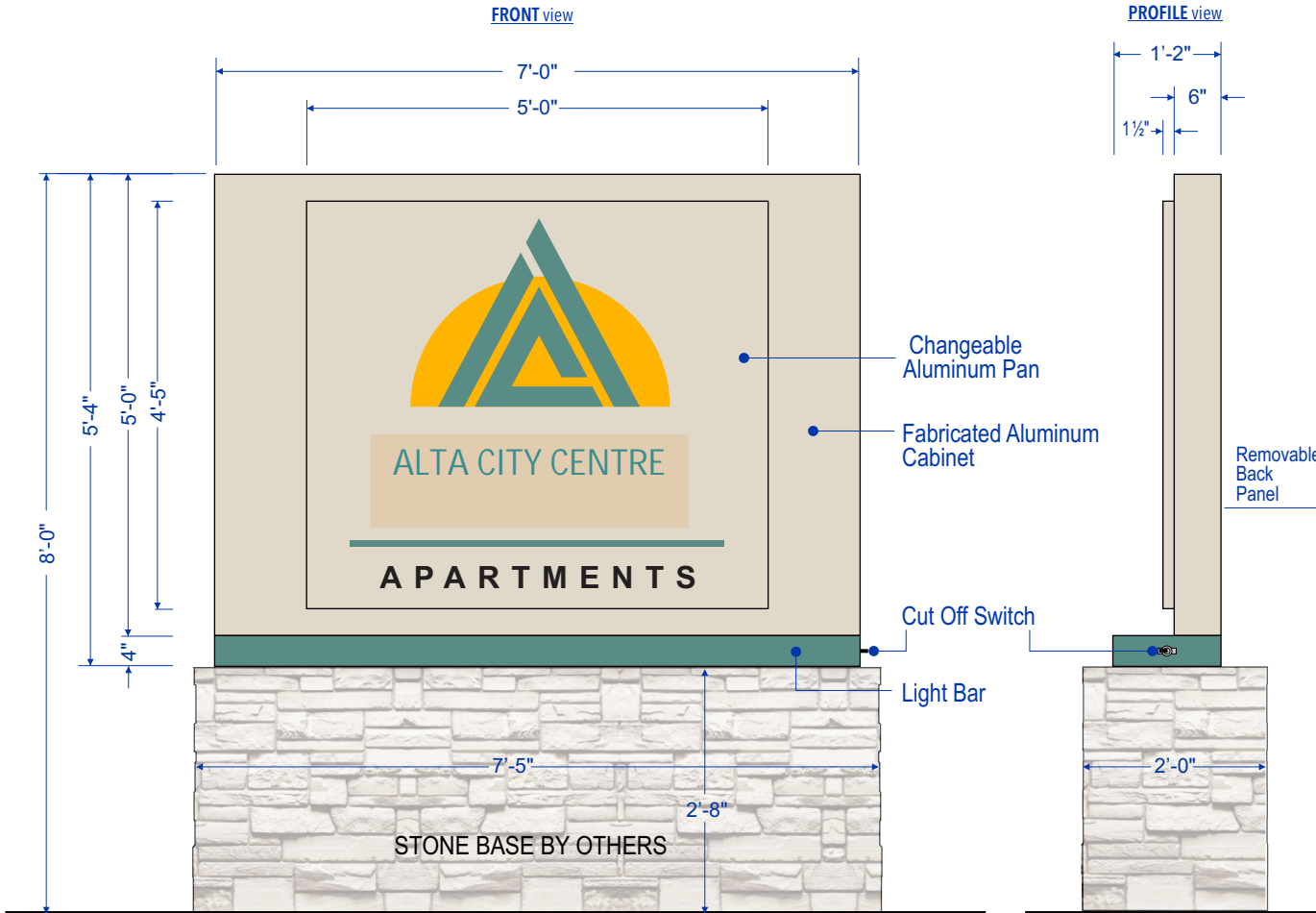
**Copy:** Direct-to-board flat UV print on face with clear coat finish.

**Light Bar:** Fabricated aluminum with LED strip and self-contained power supply. 120v, 20A service required.

**INSTALLATION**

**Mount method:** Mounts to existing base with 1/2" threaded rod and epoxy anchor adhesive.

Solid filled base provided by client



Production will not begin without a signed and checked approval on all final layouts.

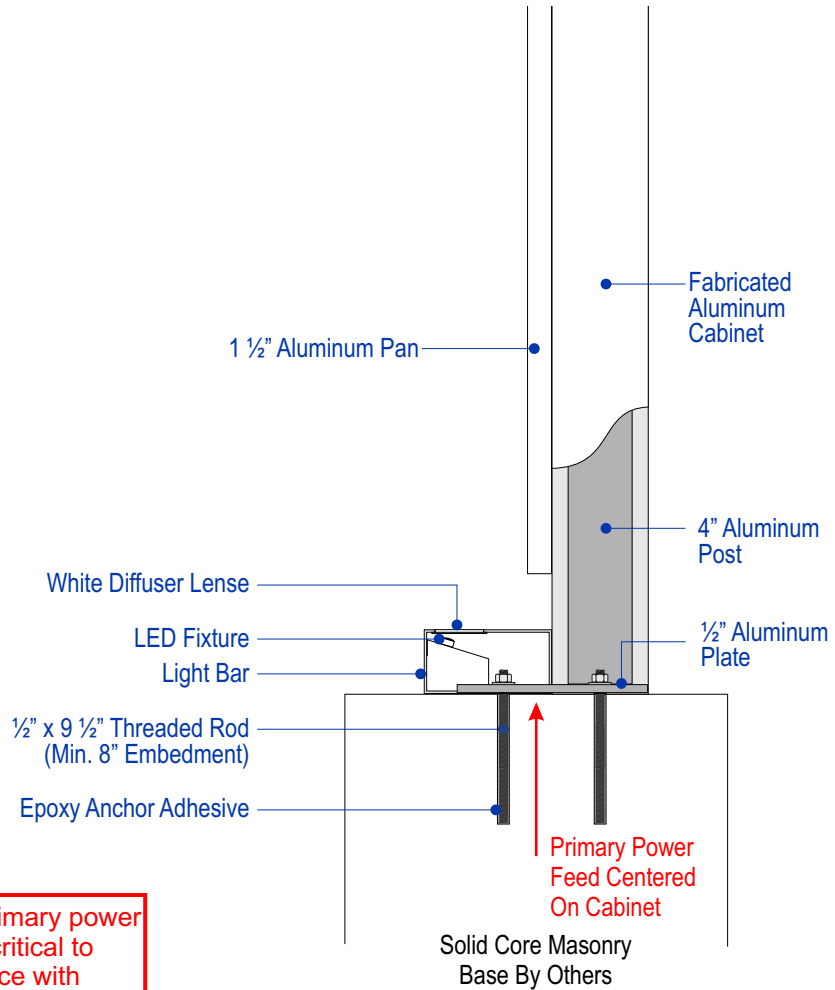
Please proof this layout carefully, check the appropriate box, sign and date.

Return layout(s) directly to your Project Manager or info@MLGsigns.com

- Approved, as is
- Approved, with changes
- Requires New Layout
- Rejected

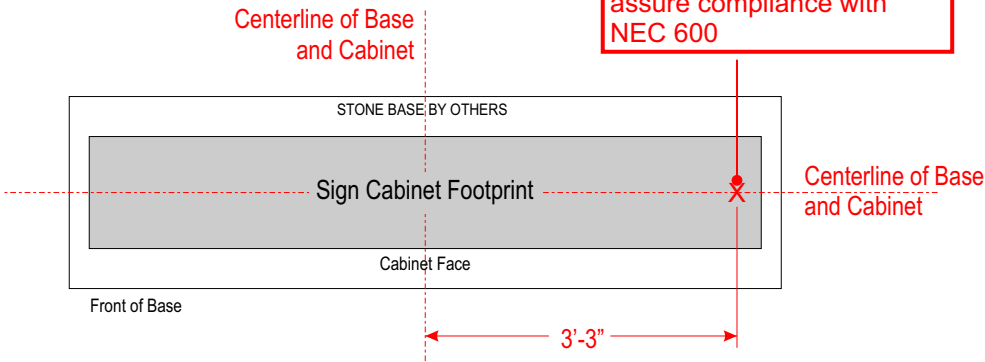
Customer Signature Required

Date Signed



SIGN CABINET SECTION DETAIL  
 Scale: 1" = 1'-0"

**IMPORTANT: Primary power feed location is critical to assure compliance with NEC 600**



PRIMARY POWER LOCATION  
 Scale: 1/2" = 1'-0"