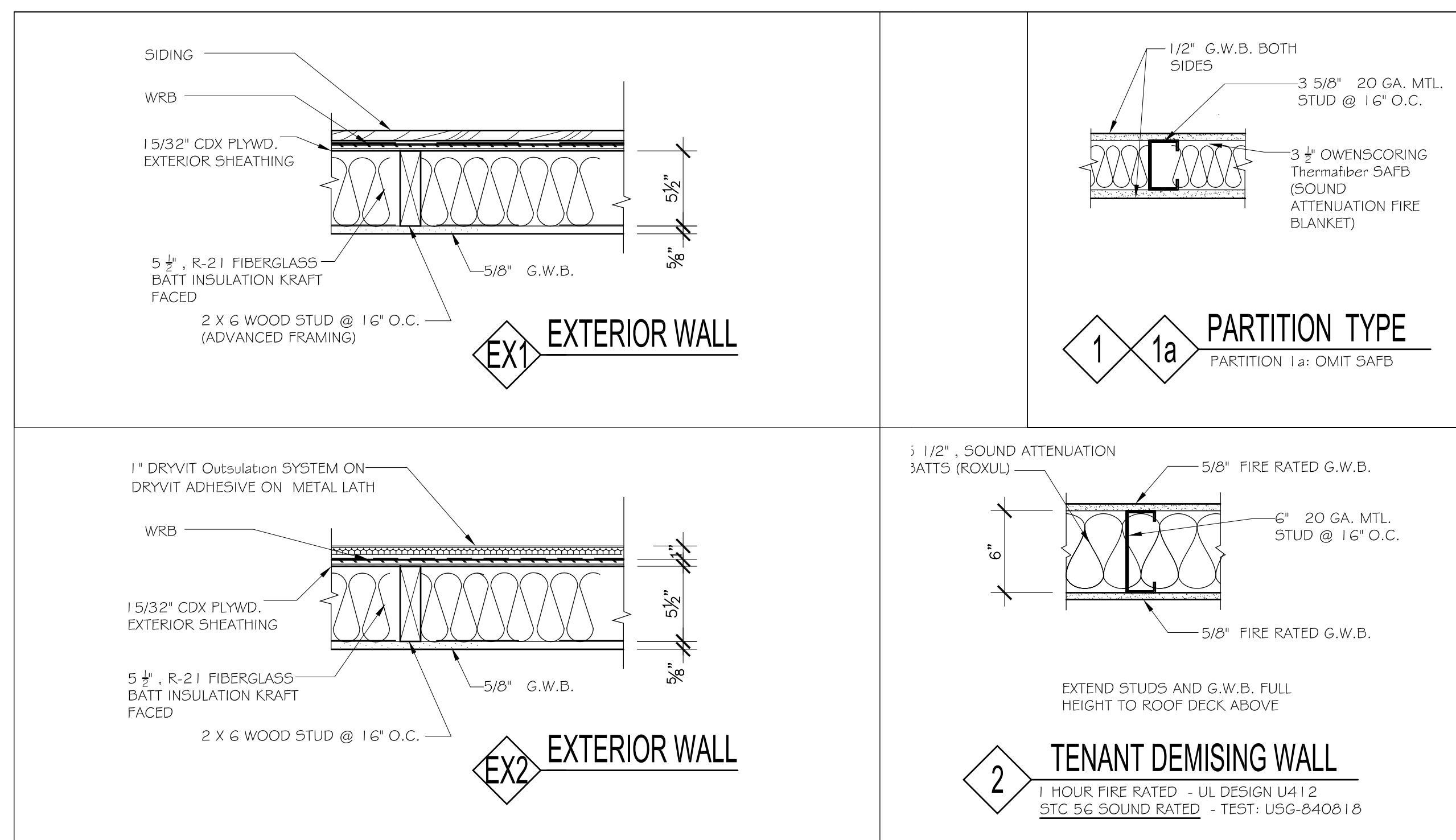


A FLOOR PLAN DIAGRAM
 1/8" = 1'-0"

- FLOOR PLAN NOTES:**
1. ALL DIMENSIONS ARE TAKEN TO THE FACE OF STUDS, UNLESS NOTED OTHERWISE.
 2. MEP WORK SHALL BE DESIGN BUILT DELIVERY METHOD.

PARTITION AND WALL TYPES



- PARTITION NOTES:**
1. PROVIDE DOUBLE WOOD STUDS AT BOTH SIDES OF ALL DOOR OPENINGS EXTENDING TO AND ANCHORED TO STRUCTURE ABOVE.
 2. PROVIDE SOLID WOOD BLOCKING FOR RUNNING TRIM, EQUIPMENT, CABINETS, MILLWORK, TOILET ACCESSORIES, RAILINGS AND GRAB BARS AS REQUIRED.
 3. PROPERLY BRACE ALL PARTITIONS.
 4. PROVIDE ALL NECESSARY MOLDINGS, ACCESSORIES AND CAULKING TO INSURE A SANITARY AND WORKMANLIKE INSTALLATION.
 5. ALL FIRE RATED, SOUND RATED AND SMOKE RATED PARTITIONS SHALL EXTEND FULL HEIGHT TO SUBFLOOR OR ROOF SHEATHING ABOVE (UNLESS OTHERWISE NOTED) AND SHALL HAVE SEALANT AT PERIMETER WITH ALL PENETRATIONS SEALED OR AS OTHERWISE REQUIRED BY THE TESTED ASSEMBLY. REFER TO UL ASSEMBLY SPEC SHEETS FOR ADDITIONAL REQUIREMENTS, FASTENING AND PARTITION DETAILS.
 6. ALL SMOKE, SOUND AND U.L. RATED PARTITIONS SHALL BE TAPED AND FINISHED FOR THEIR FULL HEIGHT.

REFER TO INTERIOR ELEVATIONS FOR ADDITIONAL INFORMATION

No.	ROOM	BASE		FLOOR		WALL		CEILING		REMARKS
		MATERIAL	FINISH	MATERIAL	FINISH	MATERIAL	FINISH	MATERIAL	FINISH	
U01	UTILITY ROOM	VB		SEALED CONCRETE	GWB 1	PAINT		GWB 1	PAINT	15'-10"
101	UNIT 101	EC	VB BY TENANT	SEALED CONCRETE	GWB 1	PAINT		GWB 1	ACT BY OTHERS	FACTORY
102	TOILET	EC	VB BY TENANT	SEALED CONCRETE	GWB 1	PAINT		GWB 1	ACT BY OTHERS	FACTORY
201	UNIT 201	EC	VB BY TENANT	SEALED CONCRETE	GWB 1	PAINT		GWB 1	ACT BY OTHERS	FACTORY
202	TOILET	EC	VB BY TENANT	SEALED CONCRETE	GWB 1	PAINT		GWB 1	ACT BY OTHERS	FACTORY
301	UNIT 301	EC	VB BY TENANT	SEALED CONCRETE	GWB 1	PAINT		GWB 1	ACT BY OTHERS	FACTORY
302	TOILET	EC	VB BY TENANT	SEALED CONCRETE	GWB 1	PAINT		GWB 1	ACT BY OTHERS	FACTORY
401	UNIT 401	EC	VB BY TENANT	SEALED CONCRETE	GWB 1	PAINT		GWB 1	ACT BY OTHERS	FACTORY
402	TOILET	EC	VB BY TENANT	SEALED CONCRETE	GWB 1	PAINT		GWB 1	ACT BY OTHERS	FACTORY
501	UNIT 501	EC	VB BY TENANT	SEALED CONCRETE	GWB 1	PAINT		GWB 1	ACT BY OTHERS	FACTORY
502	TOILET	EC	VB BY TENANT	SEALED CONCRETE	GWB 1	PAINT		GWB 1	ACT BY OTHERS	FACTORY
601	UNIT 601	EC	VB BY TENANT	SEALED CONCRETE	GWB 1	PAINT		GWB 1	ACT BY OTHERS	FACTORY
602	TOILET	EC	VB BY TENANT	SEALED CONCRETE	GWB 1	PAINT		GWB 1	ACT BY OTHERS	FACTORY
701	UNIT 701	EC	VB BY TENANT	SEALED CONCRETE	GWB 1	PAINT		GWB 1	ACT BY OTHERS	FACTORY
702	TOILET	EC	VB BY TENANT	SEALED CONCRETE	GWB 1	PAINT		GWB 1	ACT BY OTHERS	FACTORY
801	UNIT 801	EC	VB BY TENANT	SEALED CONCRETE	GWB 1	PAINT		GWB 1	ACT BY OTHERS	FACTORY
802	TOILET	EC	VB BY TENANT	SEALED CONCRETE	GWB 1	PAINT		GWB 1	ACT BY OTHERS	FACTORY
901	UNIT 901	EC	VB BY TENANT	SEALED CONCRETE	GWB 1	PAINT		GWB 1	ACT BY OTHERS	FACTORY
902	TOILET	EC	VB BY TENANT	SEALED CONCRETE	GWB 1	PAINT		GWB 1	ACT BY OTHERS	FACTORY

PROGRESS 11-01-2022

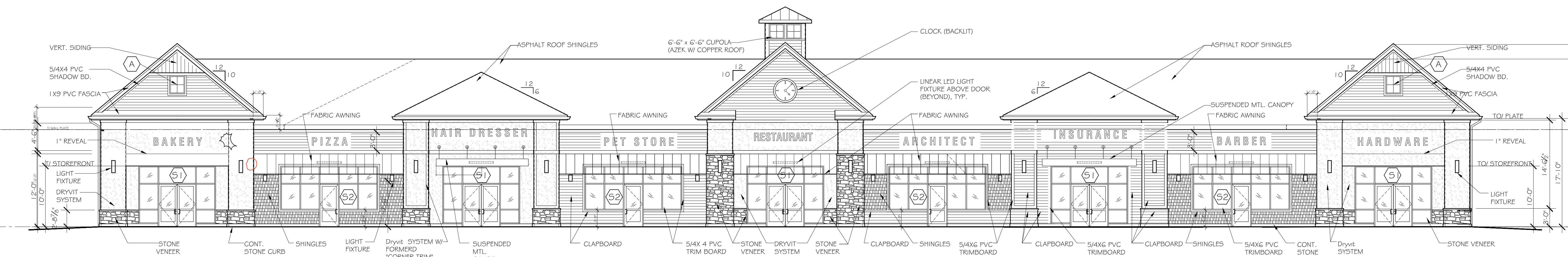
No.	Issue	Date

NEW BUILDING
 2826 POST ROAD
 WARWICK, RI

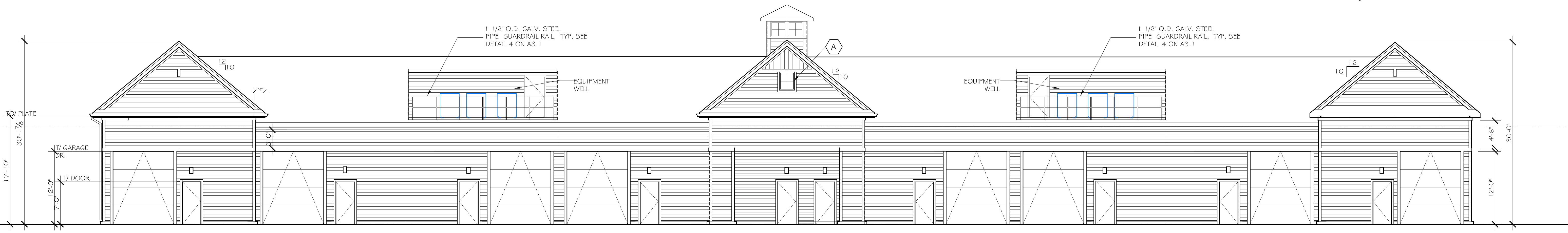
FLOOR PLAN

Project No. 22108
 Drawn By: EWW
 Date: 11-1-2022

A1.1



A FRONT (NORTHWEST) ELEVATION
1/8" = 1'-0"

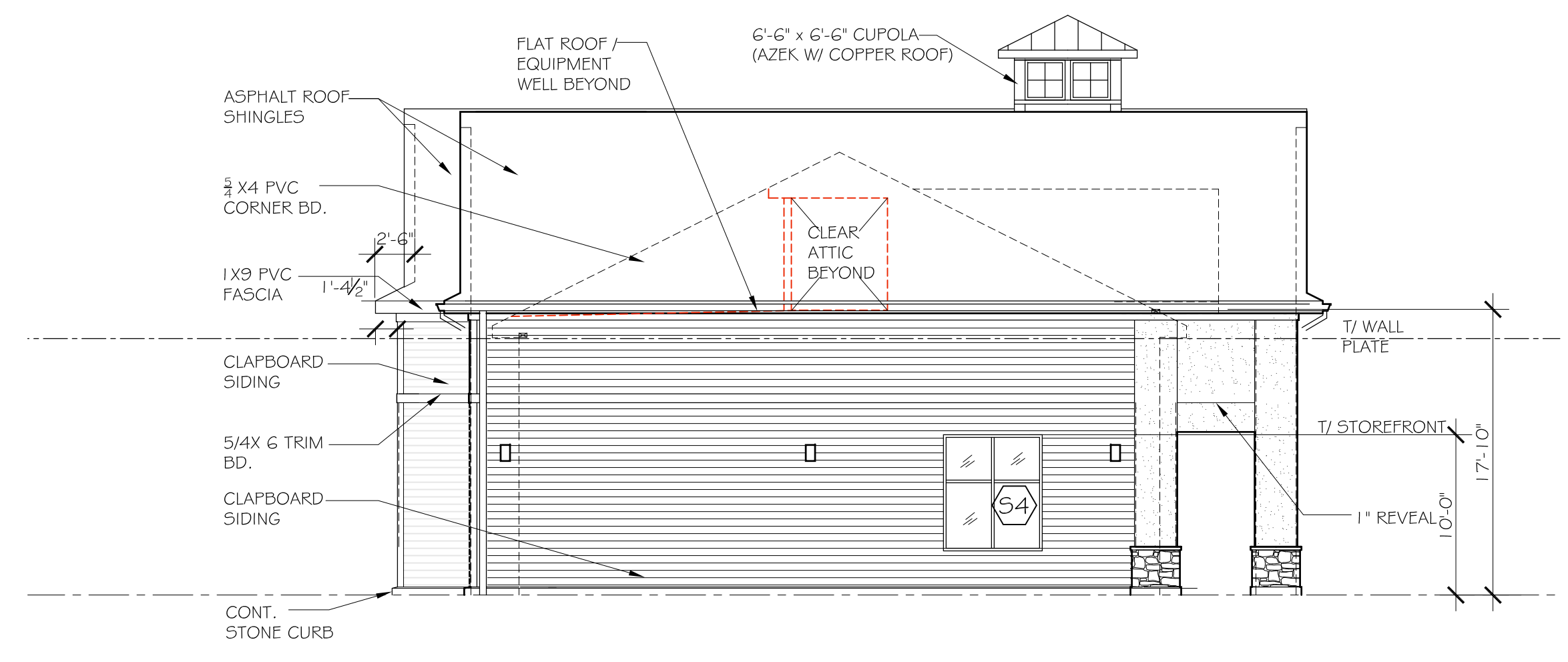


B REAR (SOUTHEAST) ELEVATION
1/8" = 1'-0"

WINDOW SCHEDULE		
SYMBOL	SIZE - ROUGH OPENING	TYPE
A	30" W X 36" H	FIXED VINYL WINDOW W/ INSULATED GLASS

WINDOW SCHEDULE NOTES:
1. E

- ELEVATION NOTES:**
- EXTERIOR HORIZONTAL SIDING SHALL BE JAMES HARDIE LAP SIDING (REFER TO SPECIFICATIONS) AND AS FOLLOWS(SUBMIT SAMPLES BEFORE ORDERING):
A. HORIZONTAL SIDING TYPE A : HardiePlank Lap Siding, SMOOTH, 6" EXPOSURE, COLOR: BOOTHBAY BLUE
HORIZONTAL SIDING TYPE B : HARDIEPLANK LAP SIDING, SMOOTH, 6" EXPOSURE, COLOR: TBD
 - BOARD AND BATTEN VERTICAL SIDING TYPE "B" : HardiePanel, SMOOTH, 5/16" THICK, WITH HARDIETRIM BATTEN BOARDS, SMOOTH, 0.75" THICK X 12" LONG X 2.5" WIDE, COLOR T.B.D. APPLY BATTEN STRIPS AT PANEL SEAMS AND AT MIDPOINT OF PANELS.
 - CEDAR SHINGLE SIDING SHALL BE WHITE CEDAR, FACTORY DIPPED, 5" EXPOSURE
 - DRYVIT SYSTEM SHALL BE, OUTSULATION PLUS, MD SYSTEM, WITH, 1" THICK EPS AND TEXTURED ACRYLIC LIMESTONE FINISH.
 - REFER TO SHEET A0.2 FOR STOREFRONT SPECIFICATIONS
 - EXTERIOR PVC TRIM SHALL BE 5/4 AND 3/4 THICK "VERSATEX" PVC TRIM BOARDS INSTALLED WITH CORTEX PLUGS AND PAINTED TWO (2) COATS LOW-LUSTER EXTERIOR PAINT. ALL TRIM ADJACENT TO SIDING SHALL BE 5/4" THICK. SEE SPECS.
 - EXTERIOR WINDOW & DOOR TRIM SHALL BE 5/4 X 4 FLAT PVC, VERSATEX WITH CROWN MOLDING @ HEAD, AND AS SHOWN ON DETAILS
 - ROOF SHINGLES SHALL BE RATED FOR 110 MPH WIND, CERTAINTED, LANDMARK PRO, WITH 40 YEAR WARRANTY. COLOR AS SELECTED BY OWNER. REFER TO SPECIFICATIONS.
 - METAL ROOF SYSTEM SHALL BE UNA-CLAD BY FIRESTONE METAL PRODUCTS, STANDING SEAM ALUMINUM ROOF SYSTEM, MECHANICALLY FASTENED, 16" PANEL, WITH KYNAR 500 FINISH, FLUOROCARBON ALUMINUM MATTE BLACK.
 - MOUNT ALL NEW LIGHT FIXTURES, FAUCETS, ELECTRICAL RECEPTACLES, ELECTRICAL AND FIRE ALARM PANELS AND OTHER EXTERIOR WALL MOUNTED ACCESSORIES ON 5/4 THICK PVC MOUNTING BLOCKS, TYPICAL. PROPERLY FLASH @ TOP OF BLOCK W/ ICE & WATER SHIELD & METAL DRIP EDGE.



C SIDE (NORTHEAST) ELEVATION (SOUTHWEST SIM. OPP. SIDE)
1/8" = 1'-0"

PROGRESS 11-01-2022

No.	Issue	Date

NEW BUILDING
2826 POST ROAD
WARWICK, RI

ELEVATIONS

Project No.
22108
Drawn By:
EWW
Date:
11-1-2022

A2.1

2022 THIS DRAWING SHALL NOT BE USED FOR ANY CONSTRUCTION PURPOSES WITHOUT THE WRITTEN AUTHORIZATION OF FRANK KARPOWICZ ARCHITECTS INC.