

CITY OF WARWICK LANDSCAPE PLANNING DATA

505. Landscaping and screening requirements for nonresidential uses.

CRITERIA	REQUIRED	PROPOSED	REGULATION
505.1 MINIMUM LANDSCAPED BUFFER.	10 FOOT WIDE LANDSCAPED BUFFER ACROSS THE ENTIRE FRONTAGE OF LOT EXCEPT FOR CURB CUTS	10' LANDSCAPED BUFFER ALONG WILLIAMS STREET	505.1 (A)
	20 FOOT WIDE LANDSCAPE BORDER REQUIRED ALONG ANY PROPERTY LINE THAT ABUTS A RESIDENTIAL DISTRICT (PERTAINS TO LOTS AT LEAST 5,000 SQUARE FEET) AND BE SCREENED WITH A 6 FOOT TALL WALL OR FENCE OR EVERGREEN HEDGE.	20 FOOT WIDE LANDSCAPE BORDER AND 6' TALL STOCKADE FENCE ALONG PROPERTY LINES	505.1 (B, C)
	ALL OUTDOOR TRASH RECEPTACLES, DUMPSTER AND ELECTRICAL BOXES SHALL BE SCREENED BY A FENCE OR TIGHT EVERGREEN HEDGE.	HOT BOX SCREENED WITH TIGHT EVERGREEN HEDGE & DUMPSTER SCREENED WITH 6" OPAQUE FENCE AND GATES	505.1 (D)
505.4 PLANT REQUIREMENTS AND SIZES.	SHRUBS SHALL FORM A CONTINUOUS VISUAL SCREEN AND SATISFY THE SIZE REQUIREMENTS OF THIS SECTION.	VISUAL SCREEN PROVIDED WITHIN REQUIREMENTS OF 505.4 (A.2) AND 505.4 (C.5)	505.4 (A.1)
	APPROX. EVERY 35 LIN. FT. OF LANDSCAPING SHALL CONTAIN 1 SHADE TREE AND 5 SHRUBS (EXCLUDING CURB CUTS)	2 TREES & 8 SHRUBS	505.4 (A.2)
	WILLIAMS STREET: 50 LIN. FT. OF 2 TREES & 50 LIN. FT. OF 5 SHRUBS		
	MINIMUM SIZE FOR SHADE TREES SHALL BE BETWEEN 2 1/2" AND 3" CALIPER AND 12-14 FT. IN HEIGHT.	2 1/2" CALIPER	505.4 (C.3)
	MINIMUM SIZE FOR EVERGREEN TREES SHALL BE BETWEEN 5 TO 8 FEET HEIGHT.	N/A	505.4 (C.4)
	MINIMUM SIZE FOR SHRUBS SHALL BE 3 FEET IN HEIGHT (B&B) OR 3 GALLON CONTAINERIZED.	3 GALLON	505.4 (C.5)
505.6 PARKING LOT BUFFERS.	PROVIDE A 10 FOOT LANDSCAPED SETBACK BETWEEN THE STREET AND PARKING LOT TO BE PLANTED WITH TREES AND SHRUBS (WHEN PARKING IS DIRECTLY ADJACENT TO STREET)	N/A	505.6 (A.1)
	PROVIDE MINIMUM 5% INTERIOR PARKING LOT LANDSCAPING 6,177 SQ. FT. PARKING X 5% = 309 SQ. FT. REQ'D	N/A	505.6 (B)
	PROVIDE CONTINUOUS LANDSCAPE STRIP BETWEEN EVERY 4 ROWS OF PARKING WITH MINIMUM OF 8 FT. WIDE	N/A	505.6 (B.1)
	CREATE LARGE PLANTING ISLANDS OVER 600 SF	N/A	505.6 (B.2)
	PROVIDE PLANTING ISLANDS (MIN. 9 FT WIDE) BETWEEN EVERY 10 TO 15 SPACES WITH 1 SHADE TREE	N/A	505.6 (B.3)

CITY OF WARWICK LANDSCAPE PLANNING DATA-PDR

Appendix A Zoning Section 300-Establishment and Classification of Districts

CRITERIA	REQUIRED	PROPOSED	REGULATION
308.2 OFF-STREET PARKING AND LANDSCAPING	A TEN-FOOT-WIDE BORDER OF GRASS, VEGETATION, OR OTHER LIVE GROUND COVER IS REQUIRED AROUND THE ENTIRE PERIMETER OF THE SITE, EXCEPT FOR ANY CURB CUTS.	10 FEET WIDE WITH GRASS AND VEGETATION	308.2 (E)

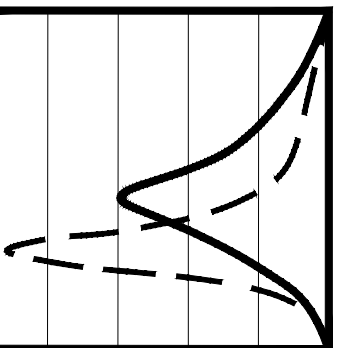
PLANT SCHEDULE

DECIDUOUS TREES	CODE	QTY	BOTANICAL / COMMON NAME	B&B	CALIPER
+	ZS	2	Zelkova serrata 'Green Vase' / Green Vase Zelkova	B & B	2.5" Cal
EVERGREEN TREES	CODE	QTY	BOTANICAL / COMMON NAME	B&B	CALIPER
○	TOE4	6	Thuja occidentalis 'Emerald' / Emerald Arborvitae	B&B; 5'-6' HT.	
FLOWERING TREES	CODE	QTY	BOTANICAL / COMMON NAME	B&B	CALIPER
⊙	PCS	4	Prunus sargentii 'Columnaris' / Columnar Sargent Cherry	B & B;	2" Cal
SHRUBS	CODE	QTY	BOTANICAL / COMMON NAME	CONT/B&B	SIZE
⊕	CH	8	Clethra alnifolia 'Hummingbird' / Summersweet	CONT	3 gal
⊕	CI	7	Cornus sericea 'Ivory Halo' / Variegated Redtwig Dogwood	CONT	3 gal
⊕	HMBN	11	Hydrangea macrophylla 'Nikko Blue' / Nikko Blue Hydrangea Mature Height: -6'	CONT	3 gal
⊕	IH2	6	Ilex crenata 'Hoogendoorn' / Hoogendoorn Japanese Holly	CONT	3 gal
⊕	IN2	7	Ilex glabra 'Nordic' / Nordic Inkberry	CONT	3 gal
⊕	IGS2	6	Ilex glabra 'Shamrock' / Inkberry	CONT	3 gal
⊕	PO	16	Potentilla fruticosa 'McKay's White' / McKay's White Bush Cinquefoil	CONT	2 gal
⊕	RN	3	Rhododendron catawbiense 'Nova Zembla' / Catawba Rhododendron Mature Height: 5'	CONT	5 gal
⊕	WFM	5	Weigela florida 'Minuet' / Minuet Weigela Mature Height: to 3'	CONT	3 gal
PERENNIALS	CODE	QTY	BOTANICAL / COMMON NAME	CONT/B&B	SIZE
⊕	ACF	22	Astilbe chinensis 'Finale' / Chinese Astilbe	CONT	1 gal
⊕	SA2	12	Sedum x 'Autumn Fire' / Autumn Fire Sedum	CONT	1 gal

Diane C. Soule & Associates, ASLA
Landscape Architecture

422 Farnum Pike
Smithfield, Rhode Island 02917
www.dianesouleandassociates.com

401.231.0736
email: diane@dcsa.ws



JCE
JOE CASALI ENGINEERING, INC.
CIVIL, MECHANICAL, ELECTRICAL, PLUMBING, AND CONSTRUCTION
DRAINAGE - WILMINGTON, MASSACHUSETTS
300 POST ROAD, WARWICK, RI 02888
(401) 944-1300 (401) 919-1313 FAX WWW.JOECASALI.COM



GREENWICH BAY TOWNHOUSES
5 WILLIAMS STREET
WARWICK, RHODE ISLAND
AP 220, LOT 95

REVISIONS:

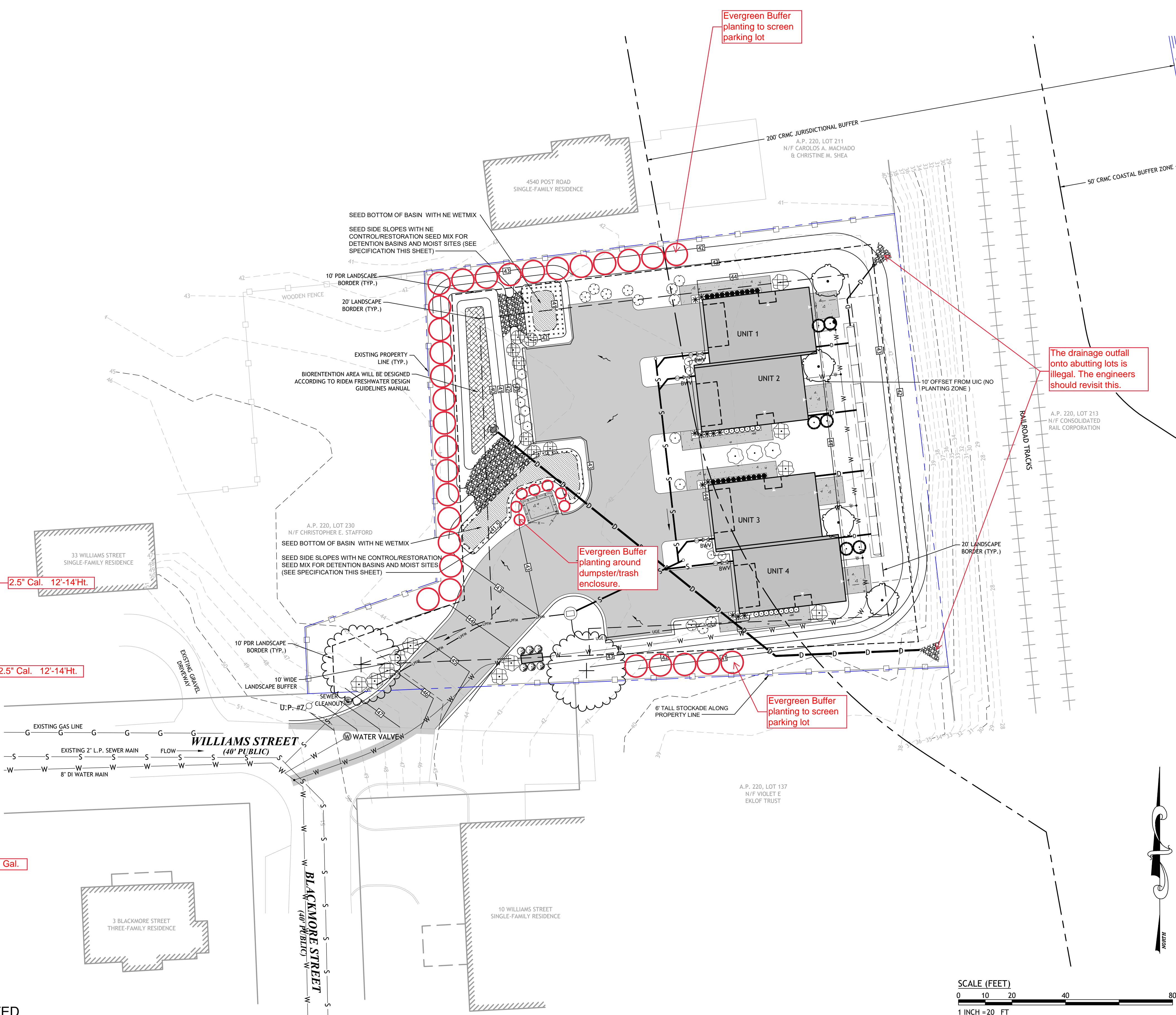
NO.	DATE	DESCRIPTION
R1	1/9/22	REV SETBACKS
R2	7/20/23	PERMIT SET

DESIGNED BY: DCS
DRAWN BY: DCS
CHECKED BY: DCS
DATE: 20-10b
PROJECT NO: NOV. 2022

PRELIMINARY, NOT FOR CONSTRUCTION

LANDSCAPE PLAN

SHEET 1 OF 1



SCALE (FEET)



D:\ALL MASTER FILES\DRAWINGS\CE\Williams St, Warwick (Preliminary Plan) - Standard\CD\Williams St, Warwick LANDSCAPE 07-13-23.dwg Jul 13, 2023 9:22am

NOTE: LOAM AND SEED ALL DISTURBED AREAS UNLESS OTHERWISE NOTED.