

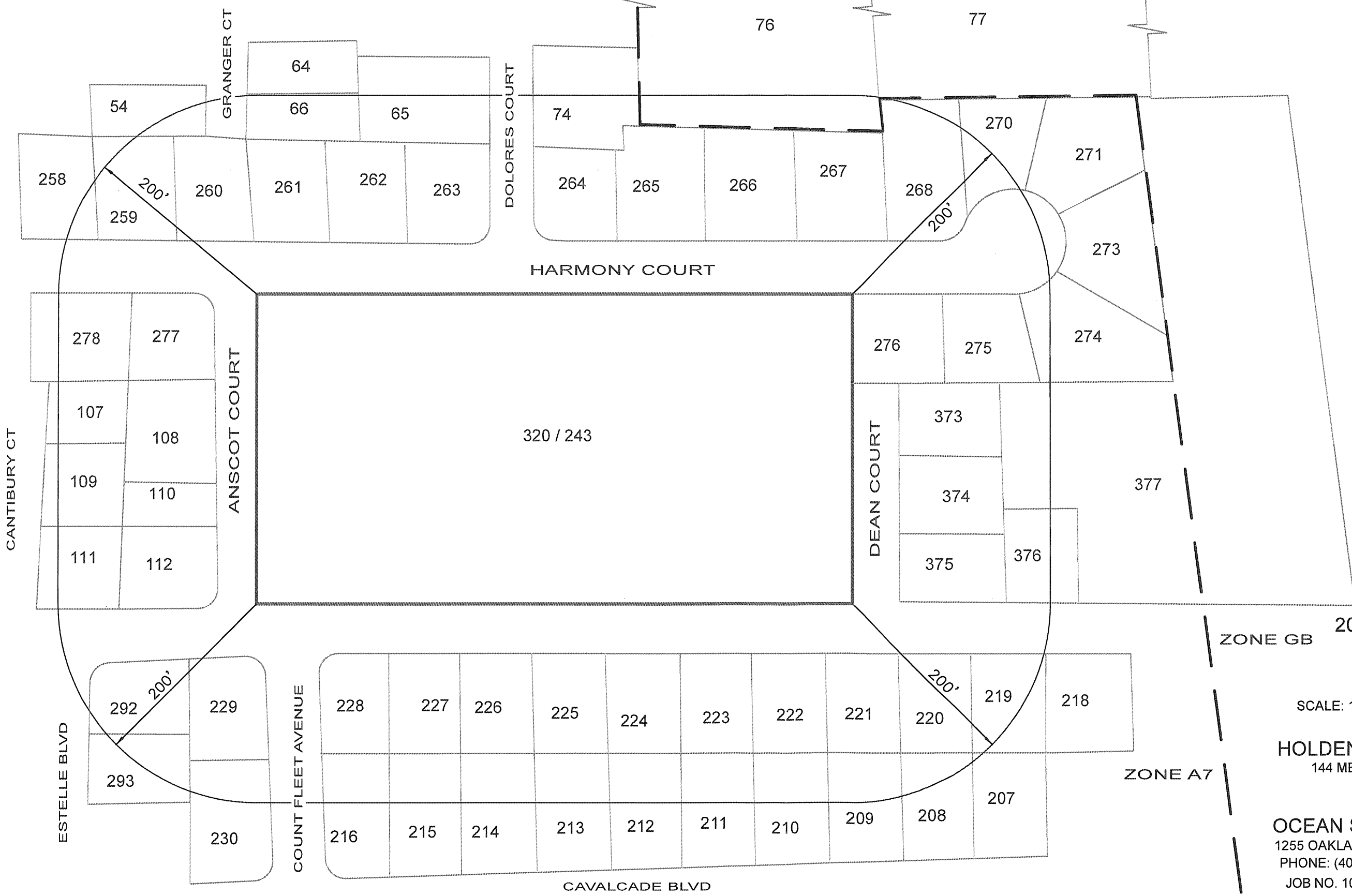
ZONE A7      ZONE GB      AIRPORT ROAD

**ZONING DISTRICT A-7**

MINIMUM LOT AREA: 7,000 S.F.  
MINIMUM LOT FRONTAGE: 70 FT.  
MINIMUM SETBACKS: FRONT: 25 FT.  
                                    SIDE: 8 FT.  
                                    REAR: 20 FT.  
MAXIMUM STRUCTURE HEIGHT: 35 FT.  
MINIMUM LANDSCAPE: 10%

**ZONING DISTRICT GB**

MINIMUM LOT AREA: 6,000 S.F.  
MINIMUM LOT FRONTAGE: 60 FT.  
MINIMUM SETBACKS: FRONT: 25 FT.  
                                    SIDE: 15 FT.  
                                    REAR: 20 FT.  
MAXIMUM STRUCTURE HEIGHT: 40 FT.  
MINIMUM LANDSCAPE: 10%



**200' RADIUS MAP**  
A.P. 320 / LOT 243  
61 HOXSIE AVENUE  
WARWICK, R.I.

SCALE: 1"=100'    DATE: APRIL 2, 2003  
PREPARED FOR:

**HOLDEN DEVELOPMENT, LLC**  
144 METRO CENTER BLVD. UNIT F  
WARWICK, R.I. 02886  
PREPARED BY:

**OCEAN STATE PLANNERS, INC.**  
1255 OAKLAWN AVENUE, CRANSTON, RI 02920  
PHONE: (401) 463-9696    info@osplanners.com  
JOB NO. 10451 / DWG. NO. 10451 - (JNP)

GRAPHIC SCALE / 1" = 100'



DISCLAIMER OF LIABILITY: OCEAN STATE PLANNERS, INC., IS NOT RESPONSIBLE DUE TO INACCURATE INFORMATION.  
ALL INFORMATION TAKEN FROM CITY OF WARWICK GIS - TAX ASSESSOR'S OFFICE