



Cabinet Details
side view

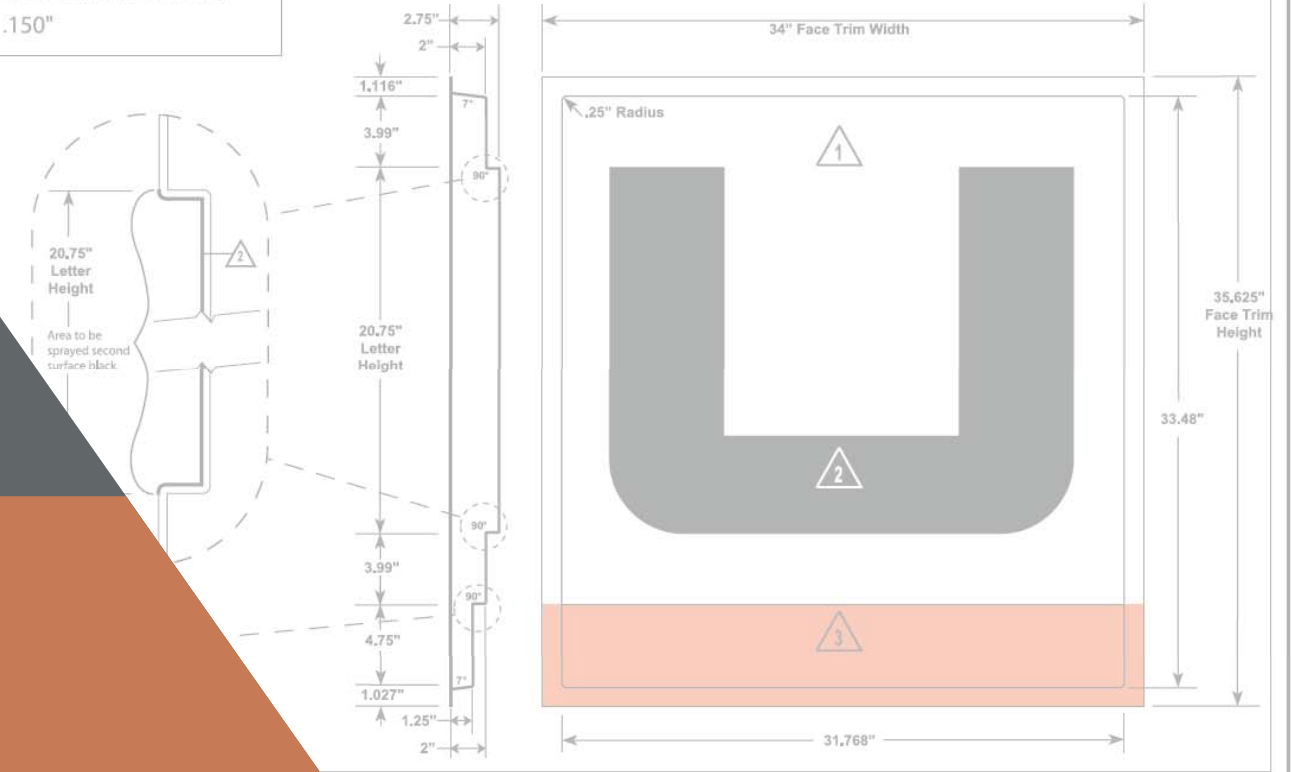
- 2" X 2" X 1/4" Aluminum Angle (Inside Cabinet)
- 10-118R Filler
- RT 200 Retainer
- 2" X 3" Service Door
- Formed Face
- 4" x 4" x .060" Clip Top Of Cabinet
- Electrical Wireway

<p>1 "Background"</p> <p>Color: Spray second surface L-403 White Lacryl, by Spraylat.</p> <p>Translucent White</p>	<p>2 "Letter"</p> <p>Color: Spray second surface L-480 Black Lacryl by Spraylat.</p> <p>Black</p>	<p>3 "Orange Bar"</p> <p>Color: Spray second surface L-422 Poppy Orange Lacryl by Spraylat.</p> <p>Translucent Orange</p>
--	---	---

Material(s) Specifications - Sign Face

Material: G.E. Lexan® SGC100 Clear (Solar Grade)

Typ. Trade: .150"



SIGNAGE PROPOSAL

TF GREEN AIRPORT

- 2" X 2" X 1/4" Aluminum Angle (Weld to Inside Cabinet)
- 2" X 2" X 1/4" Steel Angle
- RT 200 Retainer
- 10-118R Filler Extruded aluminum
- T-8 Fluorescent lamps on 12" centers
- Aluminum wireway
- Ballast, Mtd, Min, 12" up From Bottom of Cabinet to First Mtg. Hole





MOVING & STORAGE AT TF GREEN AIRPORT

1689 Post Rd. Warwick, RI 02888





MOVING & STORAGE AT TF GREEN AIRPORT

1689 Post Rd. Warwick, RI 02888



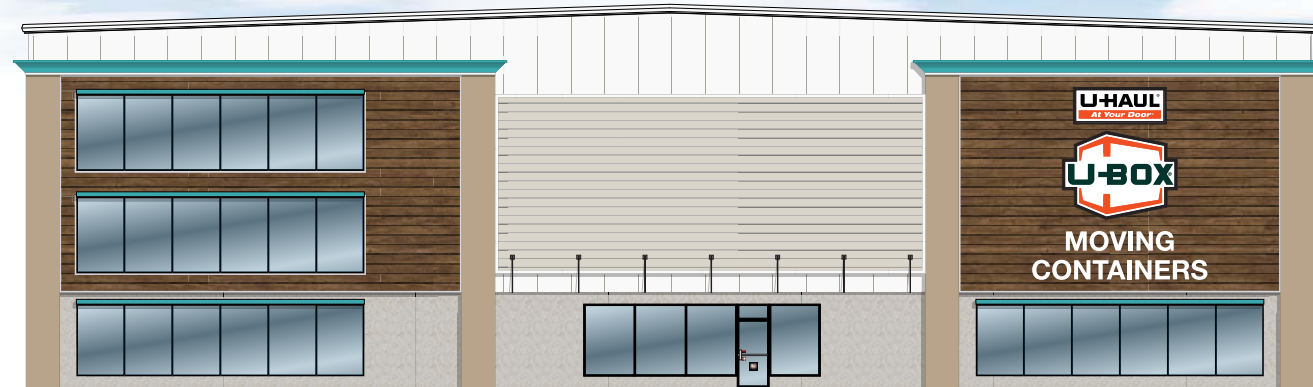
MOVING & STORAGE AT TF GREEN AIRPORT

1689 Post Rd. Warwick, RI 02888



SOUTH ELEVATION

Scale: 1" = 20'



EAST ELEVATION

Scale: 1" = 20'



MOVING & STORAGE AT TF GREEN AIRPORT

1689 Post Rd. Warwick, RI 02888

PLASTIC FORMED LETTERS

18.25'W X 3'H
54.75 SQFT
20.10'W X 3'H
60.3 SQFT

LIT CABINET SIGN

12'W X 7'H
84 SQFT



SOUTH ELEVATION

Scale: 1" = 20'

LIT CABINET SIGN
9.65'W X 3.75'H
36 SQFT

LIT CHANNEL LETTERS
11.25"W X 2'H
22.5 SQFT
18.25"W X 2'H
36.5 SQFT

LIT CABINET SIGN
12'W X 9.25'H
111 SQFT



EAST ELEVATION

Scale: 1" = 20'

