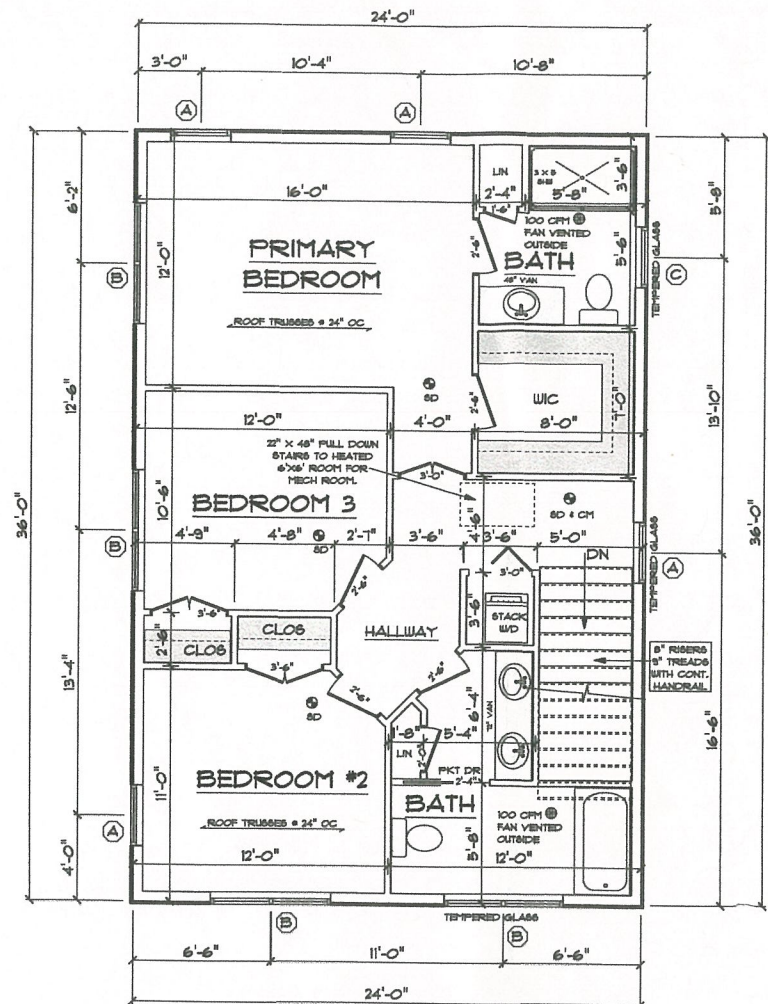
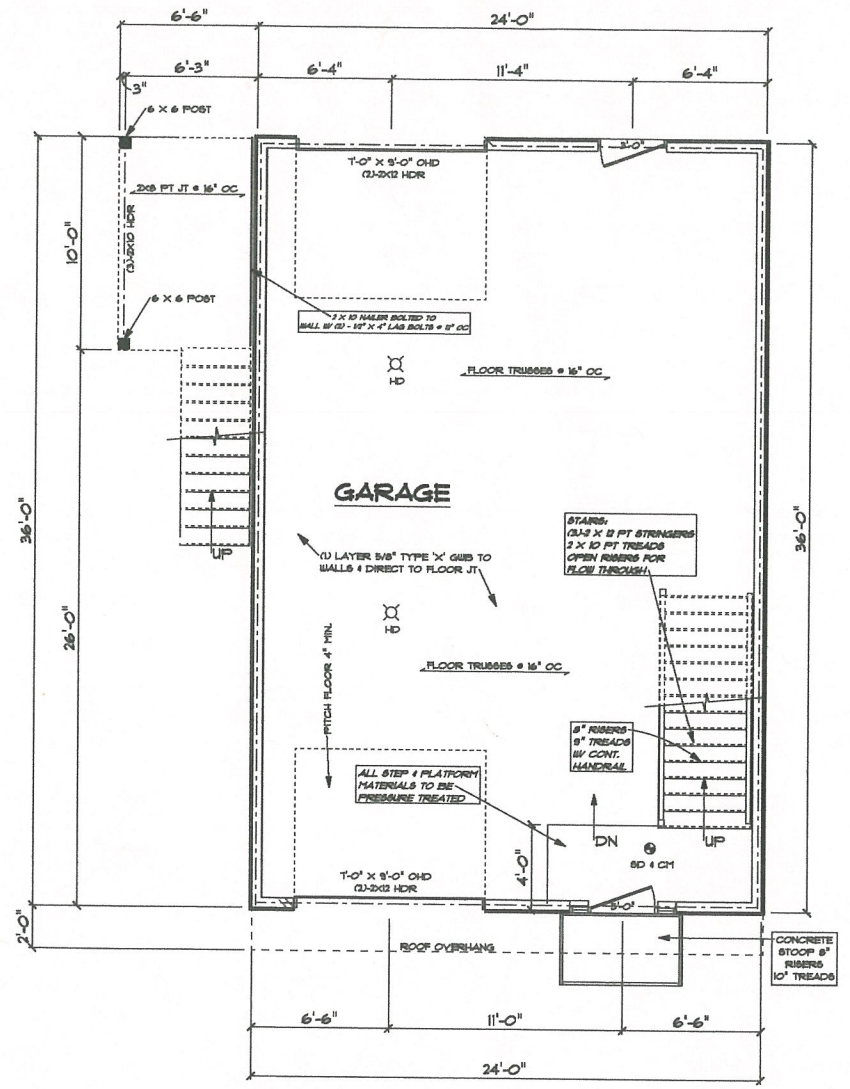


FIRST FLOOR PLAN 1/4"=1'-0"



SECOND FLOOR PLAN 1/4"=1'-0"

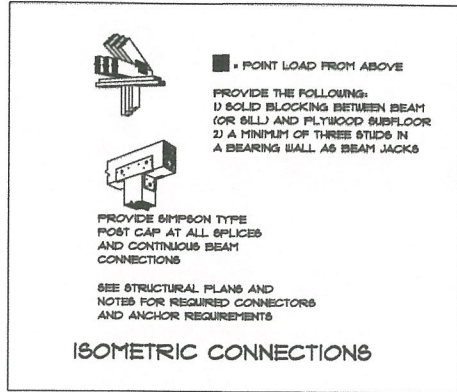


FOUNDATION PLAN 1/4"=1'-0"

2x6 STUDS @ 16" OC AT ALL EXTERIOR WALLS UNLESS OTHERWISE NOTED

• POINT LOAD FROM ABOVE

PROVIDE THE FOLLOWING:
 1) SOLID BLOCKING BETWEEN BEAM (OR SILL) AND PLYWOOD SUBFLOOR
 2) A MINIMUM OF THREE STUDS IN A BEARING WALL AS BEAM JACKS



PRELIMINARY PLANS ONLY FOR ZONING AND PRICING ONLY

WINDOW SCHEDULE							
TYPICAL HEADERS: 2" x 10" TYPICAL HEADER HEIGHT: 6'-10"							
EXCEPTIONS ARE NOTED ON PLANS							
NOTE: ALL LUMBER SPECIES FOR HEADERS, JOISTS, AND BEAMS TO BE KD SPRUCE NO. 2 OR BETTER. ALL LOADS FOR FLOOR, JOISTS, PARTITIONS, HEADERS AND BEAMS ARE BASED ON THE FOLLOWING: FLOOR JOISTS LIVING AREAS: 40 psf LIVE LOAD 30 psf DEAD LOAD FLOOR JOISTS SLEEPING AREAS: 30 psf LIVE LOAD 30 psf DEAD LOAD							
MANUFACTURER (OR EQUIVALENT): HARVEY WINDOWS MIN. U-FACTOR .35							
UNIT	ROUGH OPENING	TYPE	QTY	AREA / SILL FPF	NET AREA	DESIGN PRESSURE	
A	36-6"	2'-0" x 4'-6" 1/2"	CH	5	18.2 / 2.1"	5.03	30
B	36-6"	3'-6" 1/4" x 4'-6" 1/2"	CH PSL	7	26.0 / 2.1"	5.03 SA	30
C	36-6"	2'-0" x 3'-6" 1/2"	CH	1	5.8 / 2.1"	3.31	30
D	36-6"	3'-6" 1/4" x 3'-6" 1/2"	CH PSL	2	18.0 / 2.1"	3.31 SA	30
E							
F							
G							

DOOR SCHEDULE		
TYPICAL HEADERS: 2" x 10" TYPICAL HEADER HEIGHT: 6'-10"		
EXCEPTIONS ARE NOTED ON PLANS		
INTERIOR AND EXTERIOR DOOR BEAMS ARE NOTED ON PLANS. INTERIOR DOORS: 6'-0" HIGH (TYPICAL) EXTERIOR DOORS: 6'-10" HIGH (TYPICAL)		
MINIMUM DESIGN PRESSURE FOR SLIDING / FRENCH DOORS		30

DESIGN PRESSURE		
WIND ZONE:	30 MPH	
WIND EXPOSURE:	C	
HEIGHT CLASS:	30'-0"	
PRESSURE ZONES:	4 / 5	
DESIGN REQUIRED	3.9 / -3.6	30
DESIGN PROVIDED		

- THESE DRAWINGS ARE IN ACCORDANCE WITH THE FOLLOWING DESIGN CRITERIA.
- RIBBIC - 2 - 2018
 - WIND DESIGN: ZONE 2 (NO MPH)
 - LOAD DESIGN: 40 psf LIVING AREA LOADS
 80 psf SLEEPING AREA LOADS
 30 psf DEAD LOADS
 20 psf ATTIC LOADS
 60 psf EXTERIOR DECK LOADS
 30 psf SNOW LOADS
 - FROST DEPTH: MINIMUM 3'-6" DEEP
 - CLIMATE ZONE: 5
 - CONSTRUCTION TYPE: 3B
 - BUILDING HEIGHT: (MAXIMUM 35'-0") MEASURED FROM TOP OF FOUNDATION TO RIDGE
 - ALL INSULATION IN EXTERIOR WALLS ARE BASED ON THE MINIMUMS AS PER THE PRESCRIPTIVE METHOD OF TABLE N1001.1 OF THE ENERGY CONSERVATION CODES.

24 X 36 3-STORY COLONIAL

PREPARED FOR:
 HARRINGTON REALTY
 LOT 178 DUNDAS AVENUE
 WARWICK, RHODE ISLAND

CONSTRUCTION PLANS ARE DRAFTED FOR SINGLE-USE ONLY. DLR DIMENSIONS, INC. DOES NOT PERMIT THE USE OF PLANS THAT HAVE BEEN TAMPERED WITH BY OUTSIDE PARTIES.

DLR DIMENSIONS
 EST. 1985
 RESIDENTIAL DESIGNERS & CONSULTANTS
 401.736.3156
 DLRDIMENSIONS.COM

DLR DIMENSIONS, INC. IS NOT LIABLE FOR CHANGES TO NOTED DIMENSIONS. ALL PARTS, MATERIALS AND FINISHES SHALL BE APPROVED BY LOCAL CODES PRIOR TO AND DURING CONSTRUCTION.

SCALE NOTED

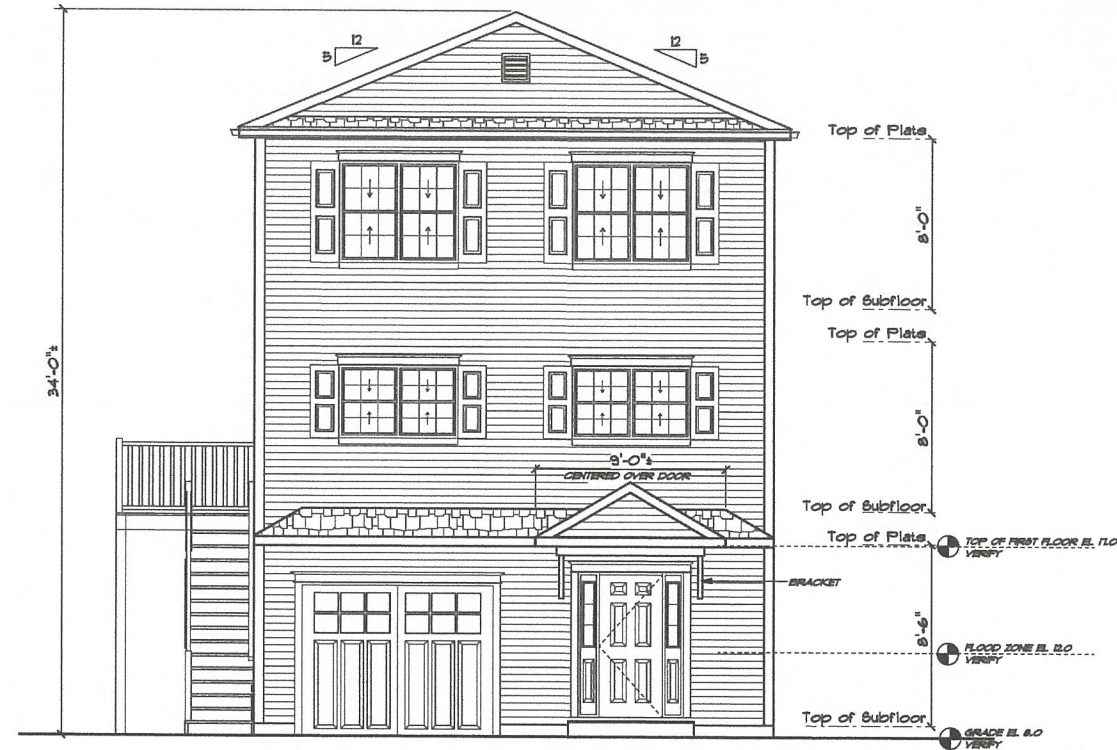
DATE: Thursday, May 5, 2022

APPROVED: DRR

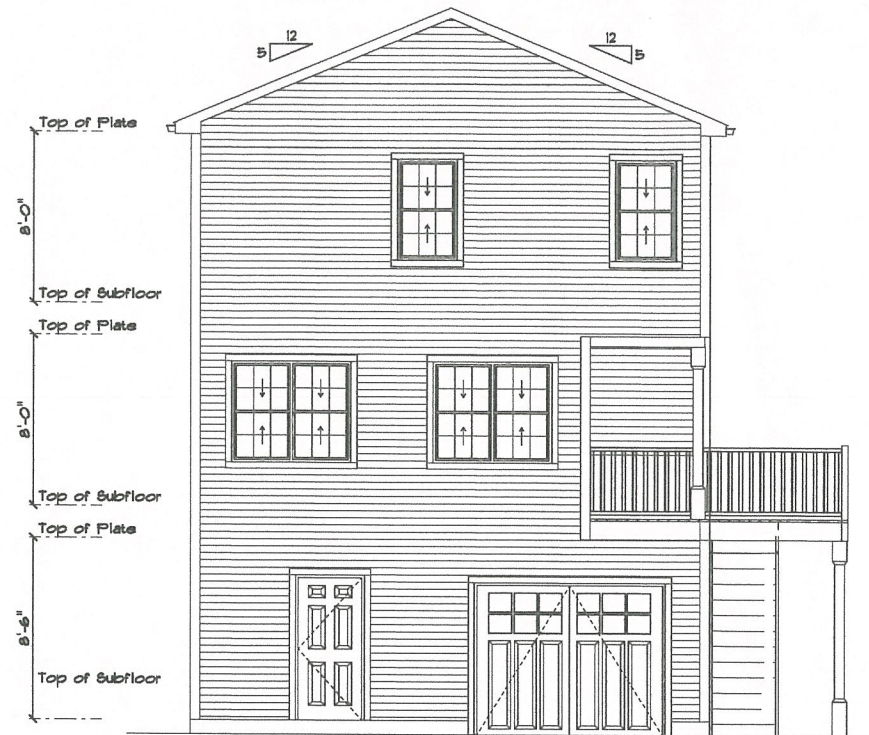
DRAWN BY: DRR

DRAWING NUMBER: 5354-173

1 OF 3

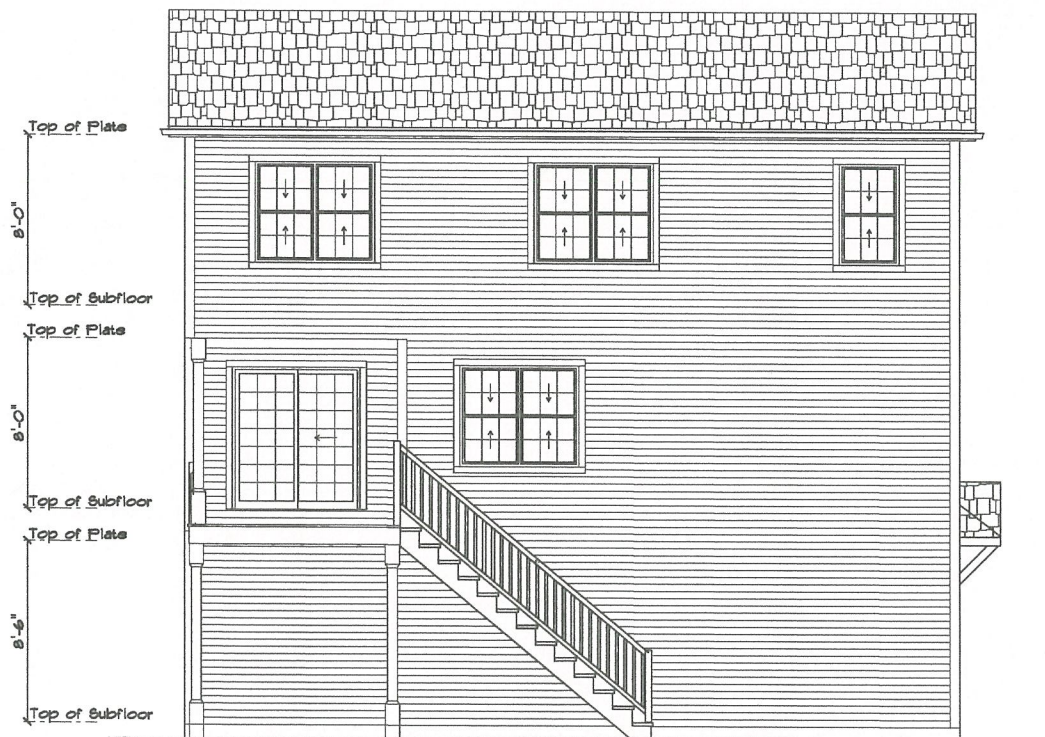


FRONT ELEVATION 1/4"=1'-0"

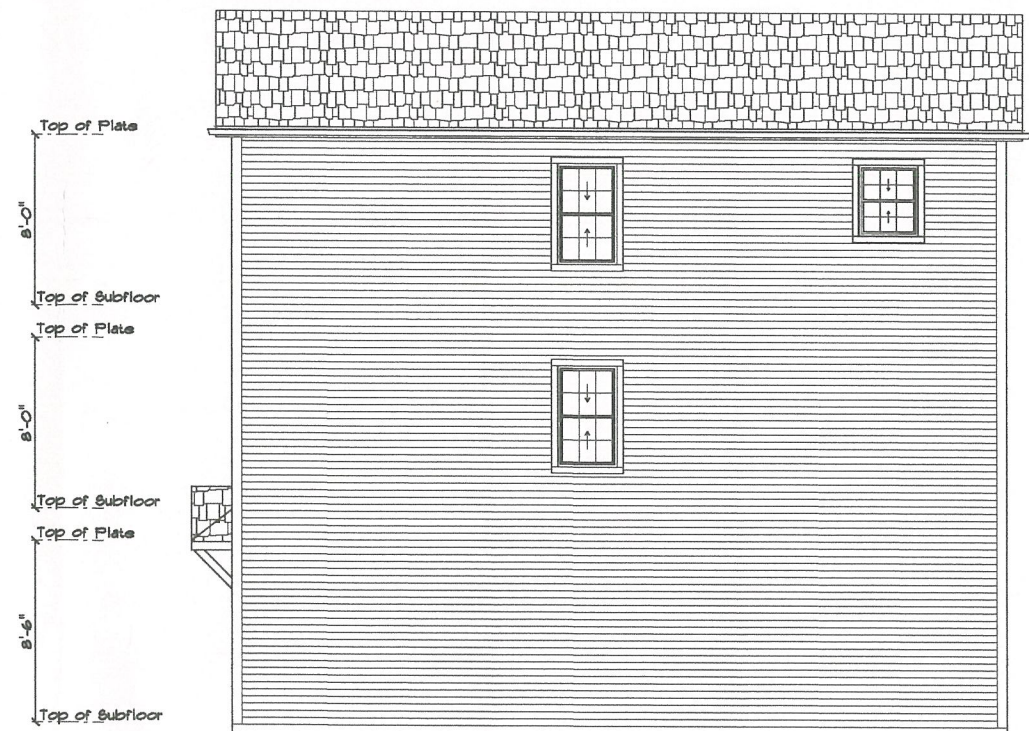


BACK ELEVATION 1/4"=1'-0"

**PRELIMINARY PLANS ONLY
FOR ZONING AND PRICING ONLY**



LEFT SIDE ELEVATION 1/4"=1'-0"



RIGHT SIDE ELEVATION 1/4"=1'-0"

24 X 36 3-STORY COLONIAL
PREPARED FOR:
HARRINGTON REALTY
LOT 178 DUNDAS AVENUE
WARWICK, RHODE ISLAND

CONSTRUCTION PLANS ARE DRAFTED FOR SINGLE-USE ONLY. DLR DIMENSIONS, INC. DOES NOT PERMIT THE USE OF PLANS THAT HAVE BEEN TAMPERED WITH BY OUTSIDE PARTIES.

EST. 1985
DLR DIMENSIONS
RESIDENTIAL DESIGNERS & CONSULTANTS
401.738.3156
DLRDIMENSIONS.COM

DLR DIMENSIONS, INC. IS NOT LIABLE FOR ANY ERRORS OR OMISSIONS IN THESE PLANS. CHANGES TO THESE PLANS MUST BE MADE BY THE ARCHITECT OR ENGINEER OF RECORD. ALL DIMENSIONS AND MATERIALS SHALL BE AS SHOWN UNLESS OTHERWISE NOTED PRIOR TO AND DURING CONSTRUCTION.

SCALE	NOTED
DATE	Thursday, May 5, 2022
APPROVED	DRR
DRAWN BY	DRR
DRAWING NUMBER	5354-179