

FRANCIS M. GOMEZ
PURCHASING AGENT



FRANK J. PICOZZI
MAYOR

CITY OF WARWICK
PURCHASING DIVISION
3275 POST ROAD
WARWICK, RHODE ISLAND 02886
TEL (401) 738-2013
FAX (401) 737-2364

To: All Prospective Bidders

From: Francis M. Gomez, Purchasing Agent

Date: December 9, 2022

Re: **Bid2023-283 Pontiac Village Park Site Improvements**

Addendum #1

Please be advised that the information provided comprises Addendum #1.

A *mandatory* pre-bid meeting was held on December 5, 2022. Potential bidders should note the following.

1. Only representatives who were present at the pre-bid meeting are eligible to submit bids

Representatives: Michael Hedely, Beausolei Brothers
Eric Hammerschleg, Cardi Corporation

2. General Project Information

The following updates shall be incorporated into the RFP:

- Project Budget:** *It is anticipated that the total cost the RFP will exceed the available budget. The Bid Form includes line item pricing for each item requested in the Plans and RFP. The City reserves the right to award the contract based either on the lump sum price or by line item pricing. The prospective bidders are advised to include the true cost in each line item (including overhead and profit).*

2. Purchase & Installation of a flag pole: *Prospective bidders are to include the purchase and installation of a black anodized 25 foot Deluxe IH Series flag pole and 5” shoe base and anchor bolts in both their lump sum and line item bid pricing. The location in park will be determined by the owner and marked prior to installation. Section 00300 has been updated (see attached) to include the line item for the purchase and installation of the flag pole. Flag pole cut sheet and installation instructions are also attached to this Addendum#1.*
3. Prevailing Wage Decision: *Prevailing Wage information has been updated and is included as an attachment to this Addendum #1. This wage information replaces the previous wage information. All interested bidders must use the following General Wage Decision:*

*RI20220001 Modification #11 (issued 12/09/2022)
Construction Types: Building, Heavy (Heavy and Marine) and
Highway*

Should you have any questions, please contact Bill Facente, Office of Housing & Community Development, at 401-921-9688.

Thank you for your interest in this project.

Addendum #1 attachments:

2023-283 Pontiac Village Park Site Improvements – Updated Section 00300 (BID)

Appendix A - General Wage Decision RI20220001 Modification #11 (issued 12/09/2022)

Flag Pole Cut Sheet

Flag Pole Installation Instructions

"General Decision Number: RI20220001 12/09/2022

Superseded General Decision Number: RI20210001

State: Rhode Island

Construction Types: Building, Heavy (Heavy and Marine) and Highway

Counties: Rhode Island Statewide.

BUILDING CONSTRUCTION PROJECTS (does not include residential construction consisting of single family homes and apartments up to and including 4 stories) HEAVY, HIGHWAY AND MARINE CONSTRUCTION PROJECTS

Note: Contracts subject to the Davis-Bacon Act are generally required to pay at least the applicable minimum wage rate required under Executive Order 14026 or Executive Order 13658. Please note that these Executive Orders apply to covered contracts entered into by the federal government that are subject to the Davis-Bacon Act itself, but do not apply to contracts subject only to the Davis-Bacon Related Acts, including those set forth at 29 CFR 5.1(a)(2)-(60).

<p>If the contract is entered into on or after January 30, 2022, or the contract is renewed or extended (e.g., an option is exercised) on or after January 30, 2022:</p>	<ul style="list-style-type: none"> . Executive Order 14026 generally applies to the contract. . The contractor must pay all covered workers at least \$15.00 per hour (or the applicable wage rate listed on this wage determination, if it is higher) for all hours spent performing on the contract in 2022.
<p>If the contract was awarded on or between January 1, 2015 and January 29, 2022, and the contract is not renewed or extended on or after January 30, 2022:</p>	<ul style="list-style-type: none"> . Executive Order 13658 generally applies to the contract. . The contractor must pay all covered workers at least \$11.25 per hour (or the applicable wage rate listed on this wage determination, if it is higher) for all hours spent performing on that contract in 2022.

The applicable Executive Order minimum wage rate will be adjusted annually. If this contract is covered by one of the Executive Orders and a classification considered necessary for performance of work on the contract does not appear on this wage determination, the contractor must still submit a conformance request.

Additional information on contractor requirements and worker protections under the Executive Orders is available at <https://www.dol.gov/agencies/whd/government-contracts>.

Modification Number	Publication Date
0	01/07/2022
1	01/21/2022
2	02/18/2022
3	02/25/2022
4	04/01/2022
5	05/06/2022
6	05/27/2022
7	06/03/2022
8	06/24/2022
9	08/26/2022
10	09/09/2022
11	12/09/2022

ASBE0006-006 06/01/2022

Rates	Fringes
-------	---------

HAZARDOUS MATERIAL HANDLER
 (Includes preparation,
 wetting, stripping, removal
 scrapping, vacuuming, bagging
 & disposing of all insulation
 materials, whether they
 contain asbestos or not, from
 mechanical systems).....\$ 38.30 25.55

ASBE0006-008 09/01/2021

Rates	Fringes
-------	---------

Asbestos Worker/Insulator
 Includes application of
 all insulating materials,
 protective coverings,
 coatings & finishes to all
 types of mechanical systems.\$ 45.00 32.89

BOIL0029-001 01/01/2021

Rates	Fringes
-------	---------

BOILERMAKER.....\$ 45.87 29.02

BRR0003-001 06/01/2020

Rates	Fringes
-------	---------

Bricklayer, Stonemason,
 Pointer, Caulker & Cleaner.....\$ 42.55 28.02

BRR0003-002 03/01/2020

Rates	Fringes
-------	---------

Marble Setter, Terrazzo
 Worker & Tile Setter.....\$ 40.78 28.92

BRR0003-003 03/01/2020

Rates	Fringes
-------	---------

Marble, Tile & Terrazzo
 Finisher.....\$ 34.10 27.88

Appendix A-2 (ADDENDUM #1)

CARP0330-001 06/05/2022

	Rates	Fringes
CARPENTER (Includes Soft Floor Layer).....	\$ 41.46	28.82
Diver Tender.....	\$ 40.72	28.66
DIVER.....	\$ 53.61	28.82
Piledriver.....	\$ 39.72	28.66
WELDER.....	\$ 42.46	28.82

FOOTNOTES:

When not diving or tending the diver, the diver and diver tender shall receive the piledriver rate. Diver tenders shall receive \$1.00 per hour above the pile driver rate when tending the diver.

Work on free-standing stacks, concrete silos & public utility electrical power houses, which are over 35 ft. in height when constructed: \$.50 per hour additional.

Work on exterior concrete shear wall gang forms, 45 ft. or more above ground elevation or on setback: \$.50 per hour additional.

The designated piledriver, known as the ""monkey"": \$1.00 per hour additional.

CARP1121-002 01/06/2020

	Rates	Fringes
MILLWRIGHT.....	\$ 39.07	29.15

* ELEC0099-002 12/05/2022

	Rates	Fringes
ELECTRICIAN.....	\$ 45.86	53.26%
Teledata System Installer.....	\$ 34.40	12.10%+15.31

FOOTNOTES:

Work of a hazardous nature, or where the work height is 30 ft. or more from the floor, except when working OSHA-approved lifts: 20% per hour additional.

Work in tunnels below ground level in combined sewer outfall: 20% per hour additional.

ELEV0039-001 01/01/2022

	Rates	Fringes
ELEVATOR MECHANIC.....	\$ 56.91	36.885+a+b

FOOTNOTES:

A. PAID HOLIDAYS: New Years Day; Memorial Day; Independence Day; Labor Day; Veterans' Day; Thanksgiving Day; the Friday after Thanksgiving Day; and Christmas Day

Appendix A-3 (ADDENDUM #1)

B. Employer contributes 8% basic hourly rate for 5 years or more of service of 6% basic hourly rate for 6 months to 5 years of service as vacation pay credit.

ENGI0057-001 06/01/2022

	Rates	Fringes
Operating Engineer: (power plants, sewer treatment plants, pumping stations, tunnels, caissons, piers, docks, bridges, wind turbines, subterranean & other marine and heavy construction work)		
GROUP 1.....	\$ 43.55	29.25+a
GROUP 2.....	\$ 41.55	29.25+a
GROUP 3.....	\$ 37.17	29.25+a
GROUP 4.....	\$ 34.32	29.25+a
GROUP 5.....	\$ 40.60	29.25+a
GROUP 6.....	\$ 31.40	29.25+a
GROUP 7.....	\$ 25.40	29.25+a
GROUP 8.....	\$ 37.25	29.25+a
GROUP 9.....	\$ 41.17	29.25+a

a. BOOM LENGTHS, INCLUDING JIBS:

- 150 feet and over + \$ 2.00
- 180 feet and over + \$ 3.00
- 210 feet and over + \$ 4.00
- 240 feet and over + \$ 5.00
- 270 feet and over + \$ 7.00
- 300 feet and over + \$ 8.00
- 350 feet and over + \$ 9.00
- 400 feet and over + \$10.00

a. PAID HOLIDAYS:

New Year's Day, President's Day, Memorial Day, July Fourth, Victory Day, Labor Day, Columbus Day, Veterans Day, Thanksgiving Day, Christmas Day. a: Any employee who works 3 days in the week in which a holiday falls shall be paid for the holiday.

a. FOOTNOTES:

Hazmat work: \$2.00 per hour additional.
Tunnel/Shaft work: \$5.00 per hour additional.

POWER EQUIPMENT OPERATORS CLASSIFICATIONS

GROUP 1: Cranes, lighters, boom trucks and derricks

GROUP 2: Digging machine, Ross Carrier, locomotive, hoist, elevator, bidwell-type machine, shot & water blasting machine, paver, spreader, graders, front end loader (3 yds. and over), vibratory hammer & vacuum truck, roadheaders, forklifts, economobile type equipment, tunnel boring machines, concrete pump and on site concrete plants.

GROUP 3: Oilers on cranes.

GROUP 4: Oiler on crawler backhoe.

GROUP 5: Bulldozer, bobcats, skid steer loader, tractor, scraper, combination loader backhoe, roller, front end loader (less than 3 yds.), street and mobile-powered sweeper (3-yd. capacity), 8-ft. sweeper minimum 65 HP).

GROUP 6: Well-point installation crew.

GROUP 7: Utility Engineers and Signal Persons

GROUP 8: Heater, concrete mixer, stone crusher, welding machine, generator and light plant, gas and electric driven pump and air compressor.

GROUP 9: Boat & tug operator.

ENGI0057-002 05/01/2022

Rates Fringes

Power Equipment Operator
(highway construction projects; water and sewerline projects which are incidental to highway construction projects; and bridge projects that do not span water)

GROUP 1.....	\$ 36.70	29.25+a
GROUP 2.....	\$ 31.40	29.25+a
GROUP 3.....	\$ 25.40	29.25+a
GROUP 4.....	\$ 31.98	29.25+a
GROUP 5.....	\$ 35.68	29.25+a
GROUP 6.....	\$ 35.30	29.25+a
GROUP 7.....	\$ 30.95	29.25+a
GROUP 8.....	\$ 32.33	29.25+a
GROUP 9.....	\$ 34.28	29.25+a

a. FOOTNOTE: a. Any employee who works three days in the week in which a holiday falls shall be paid for the holiday.

a. PAID HOLIDAYS: New Year's Day, President's Day, Memorial Day, July Fourth, Victory Day, Labor Day, Columbus Day, Veterans Day, Thanksgiving Day & Christmas Day.

POWER EQUIPMENT OPERATOR CLASSIFICATIONS

GROUP 1: Digging machine, crane, piledriver, lighter, locomotive, derrick, hoist, boom truck, John Henry's, directional drilling machine, cold planer, reclaimer, paver, spreader, grader, front end loader (3 yds. and over), vacuum truck, test boring machine operator, veemere saw, water blaster, hydro-demolition robot, forklift, economobile, Ross Carrier, concrete pump operator and boats

GROUP 2: Well point installation crew

GROUP 3: Utility engineers and signal persons

GROUP 4: Oiler on cranes

GROUP 5: Combination loader backhoe, front end loader (less than 3 yds.), forklift, bulldozers & scrapers and boats

GROUP 6: Roller, skid steer loaders, street sweeper
Appendix A-5 (ADDENDUM #1)

GROUP 7: Gas and electric drive heater, concrete mixer, light plant, welding machine, pump & compressor

GROUP 8: Stone crusher

GROUP 9: Mechanic & welder

ENGI0057-003 06/01/2022

BUILDING CONSTRUCTION

	Rates	Fringes
Power Equipment Operator		
GROUP 1.....	\$ 42.82	29.25+a
GROUP 2.....	\$ 40.82	29.25+a
GROUP 3.....	\$ 40.60	29.25+a
GROUP 4.....	\$ 36.60	29.25+a
GROUP 5.....	\$ 33.75	29.25+a
GROUP 6.....	\$ 39.90	29.25+a
GROUP 7.....	\$ 39.47	29.25+a
GROUP 8.....	\$ 36.79	29.25+a

a. BOOM LENGTHS, INCLUDING JIBS:

- 150 ft. and over: + \$ 2.00
- 180 ft. and over: + \$ 3.00
- 210 ft. and over: + \$ 4.00
- 240 ft. and over: + \$ 5.00
- 270 ft. and over: + \$ 7.00
- 300 ft. and over: + \$ 8.00
- 350 ft. and over: + \$ 9.00
- 400 ft. and over: + \$10.00

a. PAID HOLIDAYS: New Year's Day, President's Day, Memorial Day, July Fourth, Victory Day, Labor Day, Columbus Day, Veterans Day, Thanksgiving Day & Christmas Day. a: Any employee who works 3 days in the week in which a holiday falls shall be paid for the holiday.

- a. FOOTNOTE: Hazmat work: \$2.00 per hour additional.
- Tunnel/Shaft work: \$5.00 per hour additional.

POWER EQUIPMENT OPERATORS CLASSIFICATIONS

GROUP 1: Cranes, lighters, boom trucks and derricks.

GROUP 2: Digging machine, Ross carrier, locomotive, hoist, elevator, bidwell-type machine, shot & water blasting machine, paver, spreader, front end loader (3 yds. and over), vibratory hammer and vacuum truck

GROUP 3: Telehandler equipment, forklift, concrete pump & on-site concrete plant

GROUP 4: Fireman & oiler on cranes

GROUP 5: Oiler on crawler backhoe

GROUP 6: Bulldozer, skid steer loaders, bobcats, tractor, grader, scraper, combination loader backhoe, roller, front end loader (less than 3 yds.), street and mobile powered

sweeper (3 yds. capacity), 8-ft. sweeper (minimum 65 hp)

GROUP 7: Well point installation crew

GROUP 8: Heater, concrete mixer, stone crusher, welding machine, generator for light plant, gas and electric driven pump & air compressor

IRON0037-001 09/16/2021

	Rates	Fringes
IRONWORKER.....	\$ 38.21	30.58

LABO0271-001 05/30/2021

BUILDING CONSTRUCTION

	Rates	Fringes
LABORER		
GROUP 1.....	\$ 33.55	26.15
GROUP 2.....	\$ 33.80	26.15
GROUP 3.....	\$ 34.30	26.15
GROUP 4.....	\$ 34.55	26.15
GROUP 5.....	\$ 35.55	26.15

LABORERS CLASSIFICATIONS

GROUP 1: Laborer, Carpenter Tender, Mason Tender, Cement Finisher Tender, Scaffold Erector, Wrecking Laborer, Asbestos Removal [Non-Mechanical Systems]

GROUP 2: Asphalt Raker, Adzemen, Pipe Trench Bracer, Demolition Burner, Chain Saw Operator, Fence & Guard Rail Erector, Setter of Metal Forms for Roadways, Mortar Mixer, Pipelayer, Riprap & Dry Stonewall Builder, Highway Stone Spreader, Pneumatic Tool Operator, Wagon Drill Operator, Tree Trimmer, Barco-Type Jumping Tamper, Mechanical Grinder Operator

GROUP 3: Pre-Cast Floor & Roof Plank Erectors

GROUP 4: Air Track Operator, Hydraulic & Similar Self-Powered Drill, Block Paver, Rammer, Curb Setter, Powderman & Blaster

GROUP 5: Toxic Waste Remover

LABO0271-002 05/30/2021

HEAVY AND HIGHWAY CONSTRUCTION

	Rates	Fringes
LABORER		
COMPRESSED AIR		
Group 1.....	\$ 53.45	24.15
Group 2.....	\$ 50.98	24.15
Group 3.....	\$ 40.50	24.15
FREE AIR		
Group 1.....	\$ 44.05	24.15
Group 2.....	\$ 43.05	24.15
Group 3.....	\$ 40.50	24.15

Appendix A-7 (ADDENDUM #1)

12/9/22

LABORER

Group 1.....	\$ 33.55	24.15
Group 2.....	\$ 33.80	24.15
Group 3.....	\$ 34.55	24.15
Group 4.....	\$ 27.05	24.15
Group 5.....	\$ 35.55	24.15
OPEN AIR CAISSON, UNDERPINNING WORK AND BORING CREW		
Bottom Man.....	\$ 39.55	24.15
Top Man & Laborer.....	\$ 38.60	24.15
TEST BORING		
Driller.....	\$ 40.00	24.15
Laborer.....	\$ 38.60	24.15

LABORER CLASSIFICATIONS

GROUP 1: Laborer; Carpenter tender; Cement finisher tender; Wrecking laborer; Asbestos removers [non-mechanical systems]; Plant laborer; Driller in quarries

GROUP 2: Adzeperson; Asphalt raker; Barcotype jumping tamper; Chain saw operators; Concrete and power buggy operator; Concrete saw operator; Demolition burner; Fence and guard rail erector; Highway stone spreader; Laser beam operator; Mechanical grinder operator; Mason tender; Mortar mixer; Pneumatic tool operator; Riprap and dry stonewall builder; Scaffold erector; Setter of metal forms for roadways; Wagon drill operator; Wood chipper operator; Pipelayer; Pipe trench bracer

GROUP 3: Air track drill operator; Hydraulic and similar powered drills; Brick paver; Block paver; Rammer and curb setter; Powderperson and blaster

GROUP 4: Flagger & signaler

GROUP 5: Toxic waste remover

LABORER - COMPRESSED AIR CLASSIFICATIONS

GROUP 1: Mucking machine operator, tunnel laborer, brake person, track person, miner, grout person, lock tender, gauge tender, miner: motor person & all others in compressed air

GROUP 2: Change house attendant, powder watchperson, top person on iron

GROUP 3: Hazardous waste work within the ""HOT"" zone

LABORER - FREE AIR CLASSIFICATIONS

GROUP 1: Grout person - pumps, brake person, track person, form mover & stripper (wood & steel), shaft laborer, laborer topside, outside motorperson, miner, conveyor operator, miner welder, heading motorperson, erecting operator, mucking machine operator, nozzle person, rodperson, safety miner, shaft & tunnel, steel & rodperson, mole nipper, concrete worker, form erector (wood, steel and all accessories), cement finisher (this type of work only), top signal person, bottom person (when heading is 50' from shaft), burner, shield operator and TBM operator

GROUP 2: Change house attendant, powder watchperson

GROUP 3: Hazardous waste work within the ""HOT"" zone

PAIN0011-005 06/01/2021

	Rates	Fringes
PAINTER		
Brush and Roller.....	\$ 36.42	22.90
Epoxy, Tanks, Towers, Swing Stage & Structural Steel.....	\$ 38.42	22.90
Spray, Sand & Water Blasting.....	\$ 39.42	22.90
Taper.....	\$ 37.17	22.90
Wall Coverer.....	\$ 36.92	22.90

PAIN0011-006 06/01/2022

	Rates	Fringes
GLAZIER.....	\$ 40.78	23.40

FOOTNOTES:

SWING STAGE: \$1.00 per hour additional.

PAID HOLIDAYS: Labor Day & Christmas Day.

PAIN0011-011 06/01/2022

	Rates	Fringes
Painter (Bridge Work).....	\$ 55.00	23.75

PAIN0035-008 06/01/2011

	Rates	Fringes
Sign Painter.....	\$ 24.79	13.72

PLAS0040-001 06/03/2019

BUILDING CONSTRUCTION

	Rates	Fringes
CEMENT MASON/CONCRETE FINISHER...	\$ 36.00	27.15

FOOTNOTE: Cement Mason: Work on free swinging scaffolds under 3 planks width and which is 20 or more feet above ground and any offset structure: \$.30 per hour additional.

PLAS0040-002 07/01/2019

HEAVY AND HIGHWAY CONSTRUCTION

	Rates	Fringes
CEMENT MASON/CONCRETE FINISHER...	\$ 32.85	22.20

PLAS0040-003 07/01/2019

	Rates	Fringes
PLASTERER.....	\$ 37.55	27.50

PLUM0051-002 08/29/2022

	Rates	Fringes
Plumbers and Pipefitters.....	\$ 47.89	31.40

ROOF0033-004 06/01/2022

	Rates	Fringes
ROOFER.....	\$ 42.23	29.00

SFRI0669-001 04/01/2022

	Rates	Fringes
SPRINKLER FITTER.....	\$ 47.55	29.38

SHEE0017-002 12/01/2020

	Rates	Fringes
Sheet Metal Worker.....	\$ 38.58	36.73

TEAM0251-001 05/01/2022

HEAVY AND HIGHWAY CONSTRUCTION

	Rates	Fringes
TRUCK DRIVER		
GROUP 1.....	\$ 28.46	32.10+A+B+C
GROUP 2.....	\$ 28.61	\$ 32.10+A+B+C
GROUP 3.....	\$ 28.66	\$ 32.10+A+B+C
GROUP 4.....	\$ 28.71	\$ 32.10+A+B+C
GROUP 5.....	\$ 28.81	\$ 32.10+A+B+C
GROUP 6.....	\$ 29.21	\$ 32.10+A+B+C
GROUP 7.....	\$ 29.41	\$ 32.10+A+B+C
GROUP 8.....	\$ 28.91	\$ 32.10+A+B+C
GROUP 9.....	\$ 29.16	\$ 32.10+A+B+C
GROUP 10.....	\$ 28.96	\$ 32.10+A+B+C

FOOTNOTES:

A. Paid Holidays: New Year's Day, Memorial Day, Independence Day, Labor Day, Thanksgiving Day and Christmas Day, plus Presidents' Day, Columbus Day, Veteran's Day & V-J Day, providing the employee has worked at least one day in the calendar week in which the holiday falls.

B. Employee who has been on the payroll for 1 year or more but less than 5 years and has worked 150 Days during the last year of employment shall receive 1 week's paid vacation; 5 to 10 years - 2 weeks' paid vacation; 10 or more years - 3 week's paid vacation.

C. Employees on the seniority list shall be paid a one hundred dollar (\$100.00) bonus for every four hundred (400) hours worked, up to a maximum of five hundred dollars.

(\$500.00)

All drivers working on a defined hazard material job site shall be paid a premium of \$2.00 per hour over applicable rate.

TRUCK DRIVER CLASSIFICATIONS

GROUP 1: Pick-up trucks, station wagons, & panel trucks

GROUP 2: Two-axle on low beds

GROUP 3: Two-axle dump truck

GROUP 4: Three-axle dump truck

GROUP 5: Four- and five-axle equipment

GROUP 6: Low-bed or boom trailer.

GROUP 7: Trailers when used on a double hook up (pulling 2 trailers)

GROUP 8: Special earth-moving equipment, under 35 tons

GROUP 9: Special earth-moving equipment, 35 tons or over

GROUP 10: Tractor trailer

WELDERS - Receive rate prescribed for craft performing operation to which welding is incidental.

=====

Note: Executive Order (EO) 13706, Establishing Paid Sick Leave for Federal Contractors applies to all contracts subject to the Davis-Bacon Act for which the contract is awarded (and any solicitation was issued) on or after January 1, 2017. If this contract is covered by the EO, the contractor must provide employees with 1 hour of paid sick leave for every 30 hours they work, up to 56 hours of paid sick leave each year. Employees must be permitted to use paid sick leave for their own illness, injury or other health-related needs, including preventive care; to assist a family member (or person who is like family to the employee) who is ill, injured, or has other health-related needs, including preventive care; or for reasons resulting from, or to assist a family member (or person who is like family to the employee) who is a victim of, domestic violence, sexual assault, or stalking. Additional information on contractor requirements and worker protections under the EO is available at <https://www.dol.gov/agencies/whd/government-contracts>.

Unlisted classifications needed for work not included within the scope of the classifications listed may be added after award only as provided in the labor standards contract clauses (29CFR 5.5 (a) (1) (ii)).

The body of each wage determination lists the classification Appendix A-11 (ADDENDUM #1)

and wage rates that have been found to be prevailing for the cited type(s) of construction in the area covered by the wage determination. The classifications are listed in alphabetical order of ""identifiers"" that indicate whether the particular rate is a union rate (current union negotiated rate for local), a survey rate (weighted average rate) or a union average rate (weighted union average rate).

Union Rate Identifiers

A four letter classification abbreviation identifier enclosed in dotted lines beginning with characters other than ""SU"" or ""UAVG"" denotes that the union classification and rate were prevailing for that classification in the survey. Example: PLUM0198-005 07/01/2014. PLUM is an abbreviation identifier of the union which prevailed in the survey for this classification, which in this example would be Plumbers. 0198 indicates the local union number or district council number where applicable, i.e., Plumbers Local 0198. The next number, 005 in the example, is an internal number used in processing the wage determination. 07/01/2014 is the effective date of the most current negotiated rate, which in this example is July 1, 2014.

Union prevailing wage rates are updated to reflect all rate changes in the collective bargaining agreement (CBA) governing this classification and rate.

Survey Rate Identifiers

Classifications listed under the ""SU"" identifier indicate that no one rate prevailed for this classification in the survey and the published rate is derived by computing a weighted average rate based on all the rates reported in the survey for that classification. As this weighted average rate includes all rates reported in the survey, it may include both union and non-union rates. Example: SULA2012-007 5/13/2014. SU indicates the rates are survey rates based on a weighted average calculation of rates and are not majority rates. LA indicates the State of Louisiana. 2012 is the year of survey on which these classifications and rates are based. The next number, 007 in the example, is an internal number used in producing the wage determination. 5/13/2014 indicates the survey completion date for the classifications and rates under that identifier.

Survey wage rates are not updated and remain in effect until a new survey is conducted.

Union Average Rate Identifiers

Classification(s) listed under the UAVG identifier indicate that no single majority rate prevailed for those classifications; however, 100% of the data reported for the classifications was union data. EXAMPLE: UAVG-OH-0010 08/29/2014. UAVG indicates that the rate is a weighted union average rate. OH indicates the state. The next number, 0010 in the example, is an internal number used in producing the wage determination. 08/29/2014 indicates the survey completion date for the classifications and rates under that identifier.

A UAVG rate will be updated once a year, usually in January of each year, to reflect a weighted average of the current negotiated/CBA rate of the union locals from which the rate is based.

WAGE DETERMINATION APPEALS PROCESS

1.) Has there been an initial decision in the matter? This can be:

- * an existing published wage determination
- * a survey underlying a wage determination
- * a Wage and Hour Division letter setting forth a position on a wage determination matter
- * a conformance (additional classification and rate) ruling

On survey related matters, initial contact, including requests for summaries of surveys, should be with the Wage and Hour National Office because National Office has responsibility for the Davis-Bacon survey program. If the response from this initial contact is not satisfactory, then the process described in 2.) and 3.) should be followed.

With regard to any other matter not yet ripe for the formal process described here, initial contact should be with the Branch of Construction Wage Determinations. Write to:

Branch of Construction Wage Determinations
Wage and Hour Division
U.S. Department of Labor
200 Constitution Avenue, N.W.
Washington, DC 20210

2.) If the answer to the question in 1.) is yes, then an interested party (those affected by the action) can request review and reconsideration from the Wage and Hour Administrator (See 29 CFR Part 1.8 and 29 CFR Part 7). Write to:

Wage and Hour Administrator
U.S. Department of Labor
200 Constitution Avenue, N.W.
Washington, DC 20210

The request should be accompanied by a full statement of the interested party's position and by any information (wage payment data, project description, area practice material, etc.) that the requestor considers relevant to the issue.

3.) If the decision of the Administrator is not favorable, an interested party may appeal directly to the Administrative Review Board (formerly the Wage Appeals Board). Write to:

Administrative Review Board
U.S. Department of Labor
200 Constitution Avenue, N.W.
Washington, DC 20210

4.) All decisions by the Administrative Review Board are final.

=====
END OF GENERAL DECISIO"

SECTION 00300

BID

**To the City of Warwick, Rhode Island, herein called the “Owner”,
for “Pontiac Village Park Site Improvements, Bid# 2023-283.”**

The Undersigned, as a bidder herein referred to as singular and masculine, declares as follows:

- (1) The only parties interested in this BID as Principals are named herein;
- (2) this BID is made without collusion with any other person, firm, or corporation;
- (3) no officer, agent, or employee of the Owner is directly or indirectly interested in this BID;
- (4) he has carefully examined the site of the proposed Work and fully informed and satisfied himself as to the conditions there existing, the character and requirements of the proposed Work, the difficulties attendant upon its execution and the accuracy of all estimated quantities stated in this BID, and he has carefully read and examined the Drawings, the annexed proposed AGREEMENT and the Specifications and other Contract Documents therein referred to and knows and understands the terms and provisions thereof;
- (5) he understands that information relative to subsurface and other conditions, natural phenomena, existing pipes and other structures (surface and/or subsurface) has been furnished only for his information and convenience without any warranty or guarantee, expressed or implied, that the subsurface and/or other conditions, natural phenomena, existing pipes and other structures (surface and/or subsurface) actually encountered will be the same as those shown on the Drawings or in any of the other Contract Documents and he agrees that he shall not use or be entitled to use any such information made available to him through the Contract Documents or otherwise or obtained by him in his own examination of the site, as a basis of or ground for any claim against the Owner or the Engineer arising from or by reason of any variance which may exist between the aforesaid information made available to or acquired by him and the subsurface and/or other conditions, natural phenomena, existing pipes and other structures (surface and/or subsurface) actually encountered during the construction work, and he has made due allowance therefore in this BID;
- (6) and he understands that the quantities of work tabulated in this BID or indicated on the Drawings or in the Specifications or other Contract Documents are only approximate and are subject to increase or decrease as deemed necessary by the Engineer; and he agrees that, if this BID is accepted he will contract with the Owner, as provided in the copy of the Contract Documents deposited in the office of the Engineer, this BID form being part of said Contract Documents, and that he will perform all the work and furnish all the materials and equipment, and provide all labor, services, plant, machinery, apparatus, appliances, tools, supplies and all other things required by the Contract Documents in the manner and within the time therein prescribed and according to the requirements of the Engineer as therein set forth, and that he will take in full compensation therefore the total dollar amount tabulated from the actual measured quantities of said work and each unit or lump sum price stated in this BID as hereinafter set forth.

(Note: All entries in the entire BID must be made clearly and in ink; price bid must be written in both words and figures.)

<u>Item Number</u>	<u>Brief Description:</u>	<u>Lump Sum Prices</u>
1	Construct all site improvements shown in the Drawings and Specifications complete, as indicated on the drawings and as specified, _____dollars and _____ cents (\$ _____) \$ _____	
2	ALLOWANCE NO. 1 – Owner’s Allowance An Allowance of Five Thousand Dollars (\$5,000.00) shall be provided to address this item which will include, but will not be limited to: removal of unsuitable material, additional material, police details, etc.	
	<u>\$5,000.00</u> Lump Sum	<u>Five Thousand Dollars</u> In Words

TOTAL LUMP SUM OF BID:

_____Dollars and _____cents
\$ _____

The bidder will specify their bid price in both words and figures. All words and figures shall be in ink or typed. In case of discrepancy between the prices in written words and those in figures, the written word shall govern.

The undersigned agrees that for extra work, if any, performed in accordance with the terms and provisions of the annexed form of AGREEMENT, he will accept compensation as stipulated therein as full payment for such extra work.

Please note the above total lump sum of bid shall include Allowances.

ALLOWANCES

As part of the Base Bid (Total Bid), the Bidder Agrees to carry the allowances listed above in the base bid of the contract. The Owner reserves the right to remove these items from the contract totally or in part and to adjust the contract sum to reflect the actual costs of the construction authorized by the Owner.

If the Bid is accepted by the OWNER, the undersigned agrees to commence work under this Contract on a date to be specified in a written "Notice to Proceed" by the Owner and complete the entire work provided to be done under this Contract within the time stipulated in Table "A" of the AGREEMENT.

As provided in the INFORMATION FOR BIDDERS, the bidder hereby agrees that he will not withdraw this BID, within 90 consecutive calendar days after the actual date of the opening of Bids, and that, if the Owner shall accept this BID, the bidder will duly execute and acknowledge the AGREEMENT and furnish, duly executed and acknowledged, the required CONTRACT BONDS within ten (10) calendar days after notification that the AGREEMENT and other Contract Documents are ready for signature.

LINE ITEM PRICING:

The contractor shall include all costs associated with furnishing and installing the items shown below to include materials, installation, overhead and profit for each.

1. Bituminous Concrete Pathway, including base (Square yards)
\$ _____ (Written) _____ (Figures)
2. Concrete pads, including base (Square yards)
\$ _____ (Written) _____ (Figures)
3. Swings, complete install (Lump Sum)
\$ _____ (Written) _____ (Figures)
4. Playground Edging (Linear Foot)
\$ _____ (Written) _____ (Figures)
5. Engineered Wood Fiber, including base (Cubic Yards)
\$ _____ (Written) _____ (Figures)
6. Poured in Place Safety Surfacing, including base (Square Feet)
\$ _____ (Written) _____ (Figures)
7. 10' Black Vinyl Chain Link Fence (Linear Foot)
\$ _____ (Written) _____ (Figures)
8. Drainage Stone (Cubic Yards)
\$ _____ (Written) _____ (Figures)

9. New Bench (Each)

\$ _____
(Written)

(Figures)

10. Cobble Stone Edging (Linear Feet)

\$ _____
(Written)

(Figures)

11. New Ornamental Fencing (Linear Feet)

\$ _____
(Written)

(Figures)

12. Repaired Ornamental Fencing (Lump Sum)

\$ _____
(Written)

(Figures)

13. Collapsible Bollards (Each)

\$ _____
(Written)

(Figures)

14. Entry Sign (Lump Sum)

\$ _____
(Written)

(Figures)

15. Pillar Repair (Lump Sum)

\$ _____
(Written)

(Figures)

16. Powerwash retaining wall (Lump Sum)

\$ _____
(Written)

(Figures)

17. Planting Mulch (Cubic Yards)

\$ _____
(Written)

(Figures)

18. Heritage River Birch (Multi-Branch),
Betula nigra 'Cully', 2.5"-3" Caliper (Each)

\$ _____
(Written)

(Figures)

19. Hidcote Giant Lavender, *Lavendula x intermedia*

'Hidcote Giant', #3 Gallon (Each)

\$ _____

(Written)

(Figures)

20. Green Giant Arborvitae, *Thuja (standish x plicata)*

'Green Giant', 6'-8' Height (Each)

\$ _____

(Written)

(Figures)

21. 25ft. Deluxe IH Series flag pole w/5" shoe base and anchor bolts (Color: Black Anodized) (Each)

\$ _____

(Written)

(Figures)

(SEAL)

_____ L.S.
(Name of Bidder)

By _____
(Signature and title of authorized representative)

(Business address)

(City and State)

Date _____

The bidder is a corporation incorporated in the State (or Commonwealth) of _____ - a partnership - an individual. (Bidder must add and delete as necessary to make this sentence read correctly.)

(Note: If the bidder is a corporation, affix corporate seal and give below the names of its president treasurer, and general manager, if any; if a partnership, give full names and residential addresses of all partners; and if an individual, give residential address, if different from business address.)

The required names and addresses of all persons interested in the foregoing Bid, as Principals, are as follows:

(Add supplementary page if necessary)

CERTIFICATE OF AUTHORIZATION
FOR
BIDDING REPRESENTATIVE

(Note: Bidder must complete for certification of authorized representative signing Bid.)

At a duly authorized meeting of the Board of Directors of the

_____ held on _____, (Name
of Corporation) (Date)

at which all the Directors were present or waived notice, it was voted that

(Name of Authorized Representative) (Title)

of this company shall be, and hereby is, authorized to execute bidding documents, contracts and bonds in the name and on behalf of said company, and to affix the corporate seal thereto, and such execution of any contract obligation in this company's name on its behalf of such

_____ under seal of the company shall be valid and binding upon this company. (Title)
A true copy

ATTEST _____
(Clerk)

Place of Business _____

I hereby certify that I am the clerk of the _____
(Name of Corporation)

_____, that _____
(Name of Authorized Representative)

is the duly elected _____ of said company, and that the
(Title)

above vote has not been amended or rescinded and remains in full force and effect as of the date of this contract.

Corporate
Seal

(Clerk)

STATEMENT OF BIDDERS' QUALIFICATIONS

The following shall accompany the bid and is required as evidence of the bidder's qualifications to perform the work, as bid upon, in accordance with the contract drawings and specifications. This statement must be notarized. All questions must be answered. Additional data may be submitted on separate attached sheets.

- 1. Name of Bidder _____
- 2. Permanent Main Office Address _____
- 3. Official Mailing Address For This Contract _____
- 4. When Organized? _____
- 5. Where Incorporated, If a Corporation _____
- 6. Years Contracting under Present Name _____
- 7. List contracts on hand, and those completed similar in nature to this kind of project.

Owner	Engineer	Contract	Description	Contract Amount	Completion Date

- 8. List any work the firm has failed to complete, state where and why.

- 9. If you have ever defaulted on any contract, state where and why.

10. List full names and residences of all principals (i.e.: Officers, Directors, Partners, Owners) interested in this bid.

<u>Name</u>	<u>Residence</u>	<u>Title</u>	<u>Firm</u>
_____	_____	_____	_____
_____	_____	_____	_____
_____	_____	_____	_____
_____	_____	_____	_____
_____	_____	_____	_____
_____	_____	_____	_____
_____	_____	_____	_____

11. State name(s) and qualifications of resident supervisor(s) for this project.

12. List major equipment available for this project and identify ownership or rental.

13. Will you furnish a detailed financial statement and other information, requested by the Owner?

14. List bank references for verifying financial ability of your company.

<u>Name</u>	<u>Address</u>
_____	_____
_____	_____

15. The undersigned hereby authorized and requests any person, firm or corporation, to furnish all information requested by the Owner and/or its designated agents relative to the recitals comprising this Statement of the Bidder's Qualifications.

Dated at _____ this _____ day of _____ 20_____.

(Name of Bidder)

By: _____

(Title)

State of _____

County of _____

_____ being duly sworn in person, deposes and says

that he is _____ of _____,
(Title) (Name of Bidder)

that he is the firm's duly authorized agent to execute these contract documents, and that the answers to the foregoing questions and all statements therein contained are correct and true.

Subscribed and sworn to before me this _____ day of _____ 20_____.

(SEAL)

(Notary Public)

(My Commission Expires)

STATEMENT OF PROPOSED SUBCONTRACTORS

The following shall accompany the bid and is required as evidence of the bidder's qualifications to perform the work as bid upon, in accordance with the contract drawings and specifications. The Bidder must state the names and appurtenant information of all major subcontractors he proposed to use to complete the work as bid upon. Additional data may be submitted on separate attached sheets.

If subcontractors are not to be used to complete the Work and/or any portion thereof, as herein bid upon, the Bidder must acknowledge by writing "NONE" _____.

Description of Work _____

Approximate percentage of Total Bid _____

Proposed Subcontractor, Name _____

Address _____

Description of Work _____

Approximate percentage of Total Bid _____

Proposed Subcontractor, Name _____

Address _____

Description of Work _____

Approximate percentage of Total Bid _____

Proposed Subcontractor, Name _____

Address _____

Bidder to insert description of work, percentage of Total BID, and subcontractors' names as may be required.

This is to certify that all names of the above-mentioned subcontractors are submitted with full knowledge and consent of the respective parties.

The Bidder warrants that none of the proposed subcontractors have any conflict of interest as respects this contract.

Date _____

Bidder

(Name of Bidder)

By

(Signature)

(Title)

(Business Address)

(City and State)

By

(Signature)

(Title)

(Business Address)

(City and State)



Model ECXA25 IH

Single sheave truck, cast aluminum revolving, non-fouling, internal halyard truck

1/8" x 7x19 Mil-C-5424 Stainless steel aircraft cable

Standard flag arrangement: 4' x 6'

Neoprene coated 2" diameter steel counterweight

Nylon beaded retainer ring

Gearless, self locking direct drive winch with six tumbler cylinder lock

Aluminum flash collar

3000 PSI concrete

Hardwood wedges (supplied by others)

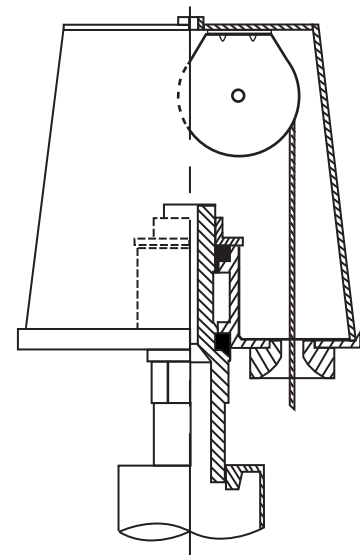
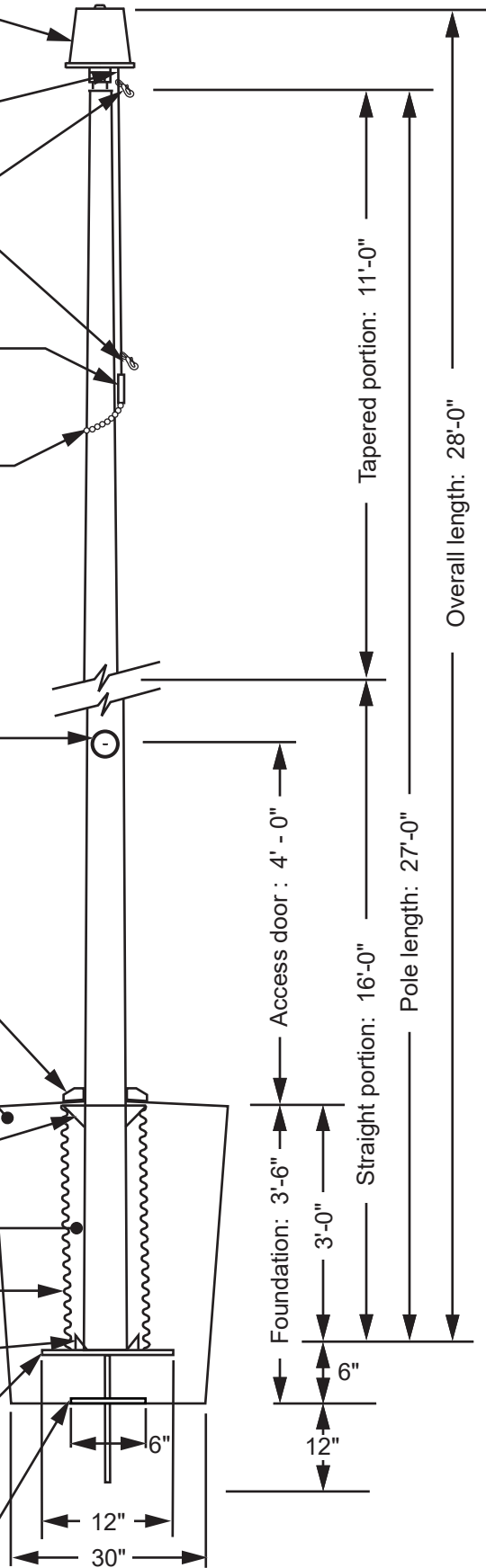
Dry sand tightly tamped after aligning pole

Foundation sleeve -16 ga hot dip galvanized steel

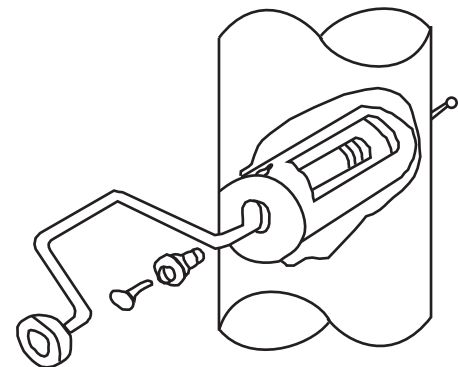
Steel centering wedges

1/4" Steel base plate

1/4" Steel support plate welded to grounding spike



Revolving non-fouling internal halyard truck, cast aluminum body, 26 stainless steel ball bearings, and 2-1/2" diameter plated steel sheave.

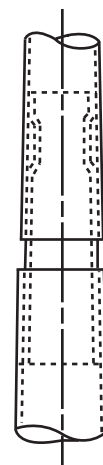


Winch Detail

All shafts with overall length of more than 38'-6" are shipped in two sections.

Each section matched marked for field assembly. Exposed portion of jam sleeve must be **well lubricated** prior to assembly.

1-1/2" maximum shop gap allowed for field fitting (ram for tight joint)



Project:	Ground set tapered aluminum flagpole: ALLOY: 6063T6	EDER FLAG	Date:
Location:	Exposed height: 25'-0"	Overall height: 28'-0"	Revision:
Architect:	Ship in 1 section	Butt diameter: 5"	1000 W. Rawson Avenue
Contractor:	Top diameter: 3"	Wall thickness: .156"	Oak Creek, WI 53154
Customer:	Finish: 100 grit polish -		Job:

INTERNAL HALYARD FOUNDATION INSTALLATION INSTRUCTIONS



1. Dig foundation hole four to six times the butt diameter of the flagpole.
2. Set the foundation tube so that the top of the foundation tube is two inches above grade.
3. Plumb foundation tube and brace so that it will not move during the pouring of the concrete.
4. Pour concrete and trowel up even with top of foundation tube. Keep inside of foundation tube dry.
5. Lay pole on sawhorses and unwrap. For sectional poles check both ends for any burrs. If any are found, file them off and wipe the areas clean. Liquid Soap the jamb sleeves. Align the arrows and/or numbers on each section and jamb together. Numbers must be identical for a proper fit.
6. Turn to the next page for winch and cable assembly.
7. Screw ball into truck and tighten ball set screw. Ball should be tightened into truck tightly by turning stem of ball with wrench. Do not tighten by turning ball proper. Ball optional on internal halyard poles.
8. If flash collar is provided with pole, slide collar on from the bottom of pole to above winch level and attach flash collar by tying to the pole with line to hold flash collar until after erection of pole. Then remove line, slide collar down, caulk between the collar and the pole with waterproof sealant (like roofing cement or asphaltum sealant).
9. Erect pole into foundation tube and center it. Turn so that the access door is in the direction desired.
10. Place wood wedges (supplied by others) between the pole and the foundation tube and plumb pole.
11. Pack dry sand between the pole and foundation tube. Leave two inches void at the top and fill with waterproof sealant to keep water out of the sand.

IMPORTANT:

When erecting sectional flagpoles, never place your sling above the joint. Sling must be positioned below the joint, thus eliminating the possibility that the two sections could separate during hoisting.

CAUTION

Extreme caution should be exercised when installing flagpoles near overhead power lines or in the vicinity of buried cables.



ACCESSORY ASSEMBLY INSTRUCTIONS

1. For ease of assembly, the upper and lower cable assemblies have been pre-assembled at our factory.
2. Locate truck with factory installed cable assemblies (See Illustration #1).
3. Locate lower cable assembly; this will be the cable exiting from the threaded portion of the truck (See Illustration #1).
4. Using an electrical "FISH TAPE" feed lower cable assembly through the 1-1/2" threaded hole at the top of the flagpole, pull lower cable through entire length of flagpole.
5. A winch hole with a slotted keyway will be found about 4 ft. above grade from the bottom of the pole. Using extreme caution, reach into this hole, grasp cable and pull about 4 ft. of cable through this hole (See Illustration #2). **USE CAUTION, THE EDGES OF THIS HOLE MAY BE SHARP!**
6. You should now have all but a few inches of the lower cable assembly inside of the flagpole, or at the lower end of the flagpole. If this is not the case, then repeat steps 1 thru 5.
7. Screw the truck assembly into the top of the flagpole securely.
8. If steps 1 thru 7 have been satisfactorily completed, then you are now ready to install the WINCH ASSEMBLY.
9. Locate the winch assembly. Remove the cylinder lock keys which are taped to the side of the winch assembly. Remove the hex drive countersunk stainless steel screw from the rear of the winch. Put keys and screw in a safe location. You will have to use them in a later step.
10. To remove the lock from winch, insert key, turn counter-clockwise and pull until the cylinder comes out.
11. Locate cable retaining hole and cable retaining set screw (See Illustration #3). With painted surface of winch in left hand and unpainted surface in your right hand, look into window of winch. You will see a 1/8" hole located on right side of the winch drum. This is the cable retaining hole.
12. Take loose end of cable that is protruding from the winch hole and insert into the cable retaining hole. At this point it is important not to expose any cable on the other side of the drum (See Illustration #3).
13. Locate crank handle. Insert into recess and push in and turn clockwise until cable retaining set screw is exposed.
14. Using appropriate size, align wrench and tighten set screw securely (See Illustration #3).
15. Using a square keyway as a pathway for the 1/8" cable, insert the cartridge into the winch hole (See Illustration #4).
16. Locate 1/2" hole which is directly opposite the winch hole. Align this hole with the hole in the cartridge, insert screw and tighten securely (See Illustration #5).
17. With cartridge winch properly installed, insert crank into crank socket. Push in and turn CLOCKWISE until the upper cable starts to move toward the top of the flagpole.
18. Locate the rubber coated counterweight and attach temporarily to open chain link at loose end of the upper cable.



ILLUSTRATION #1

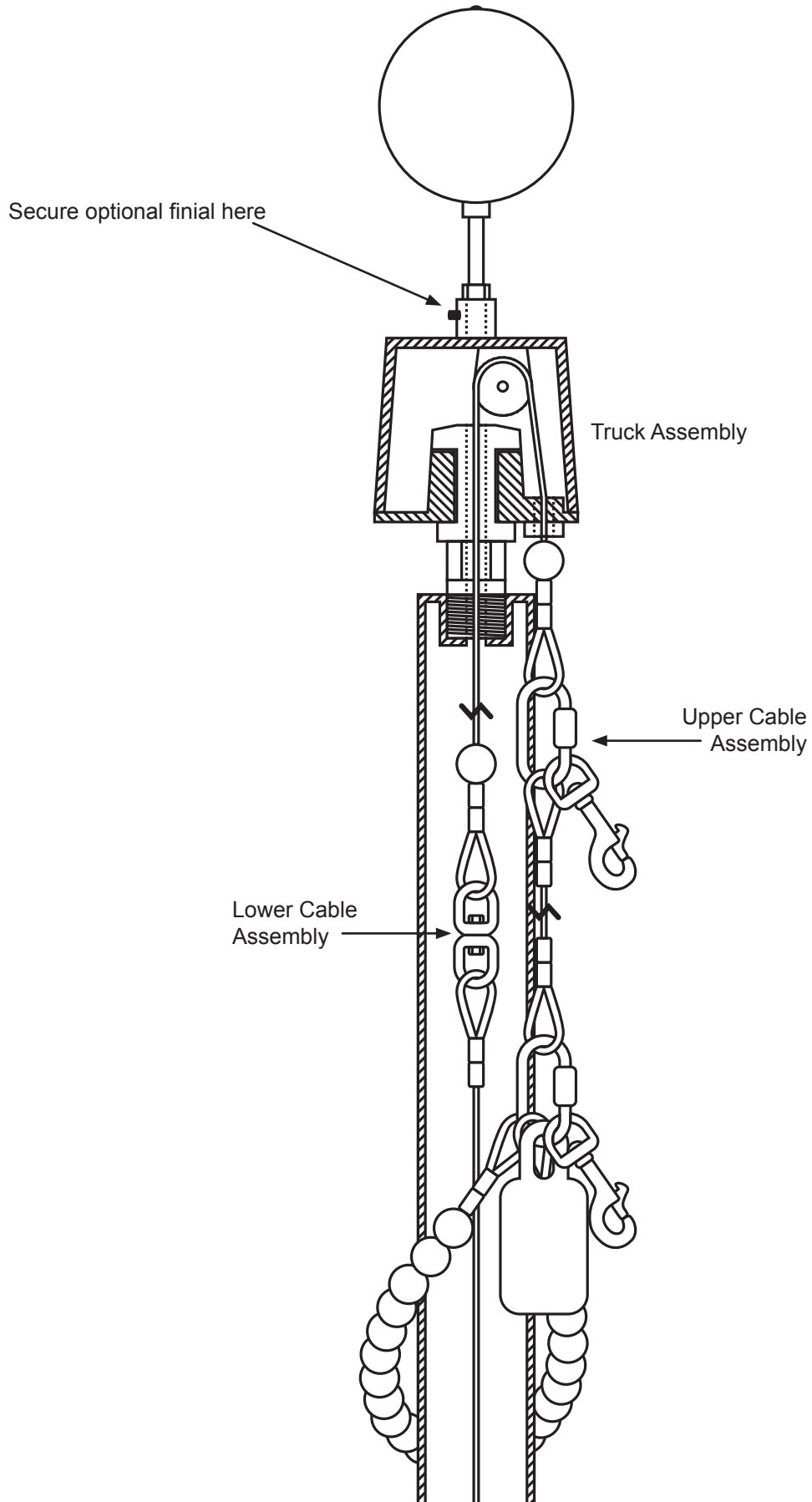


ILLUSTRATION #2

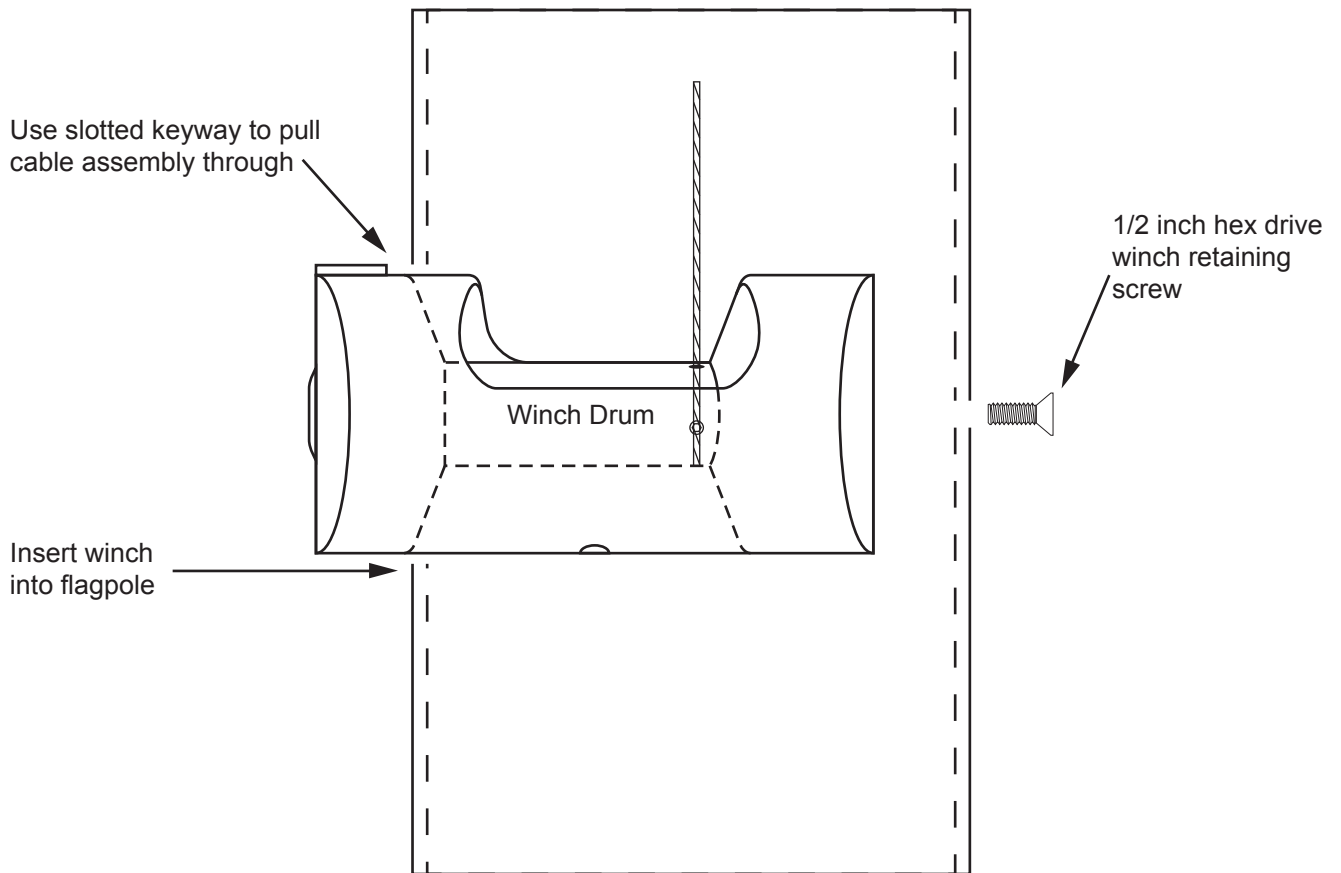


ILLUSTRATION #3

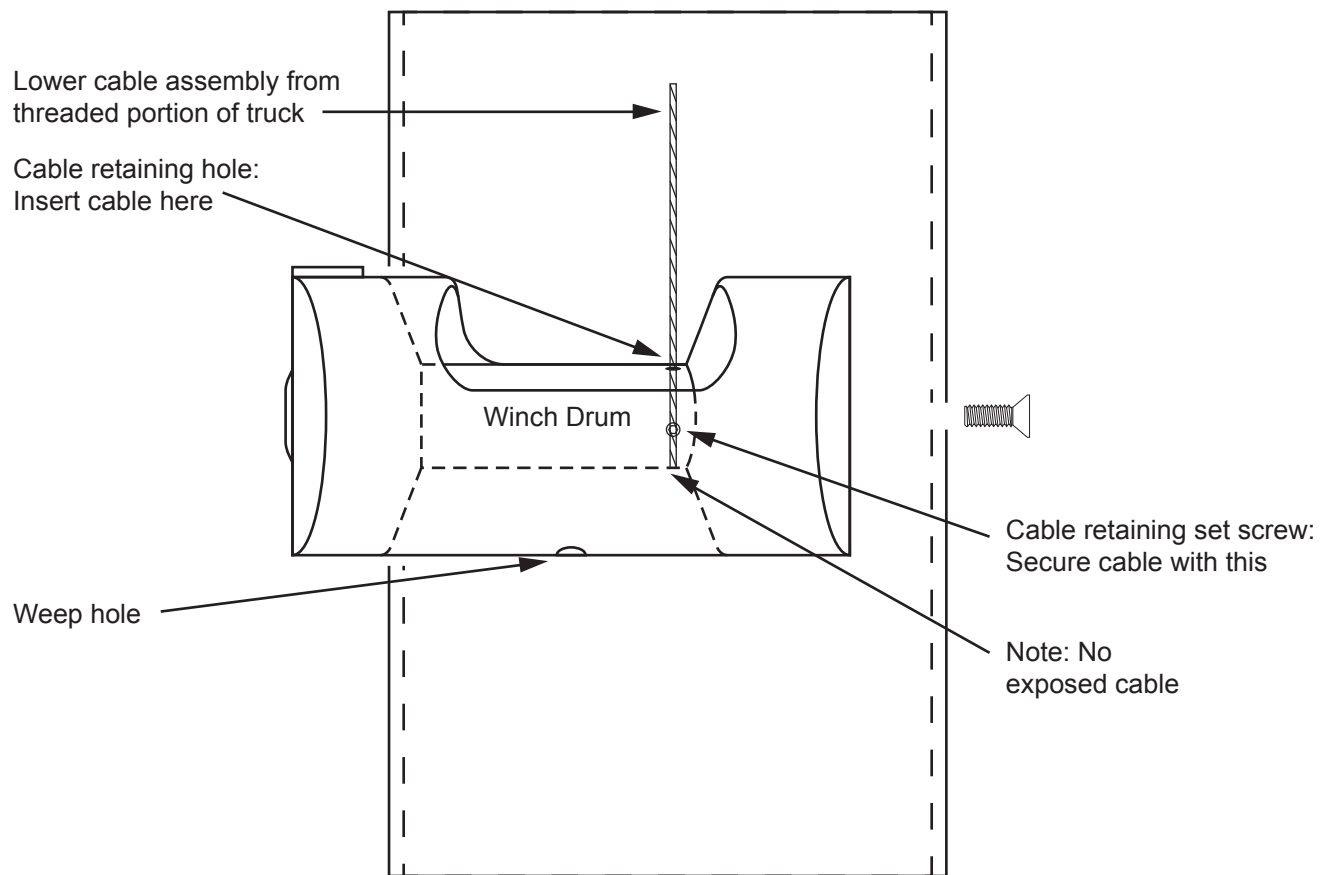
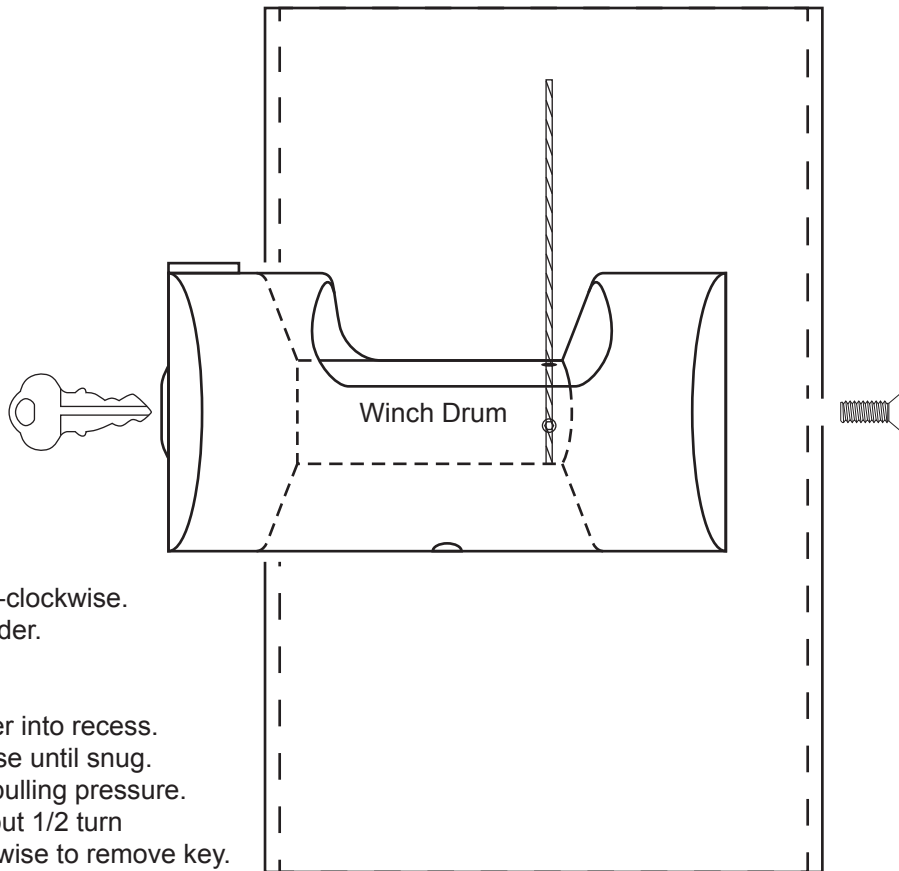


ILLUSTRATION #4



To unlock:

- Insert key.
- Turn counter-clockwise.
- Pull out cylinder.

To lock:

- Insert cylinder into recess.
- Turn clockwise until snug.
- Apply slight pulling pressure.
- Turn key about 1/2 turn counterclockwise to remove key.

ILLUSTRATION #5

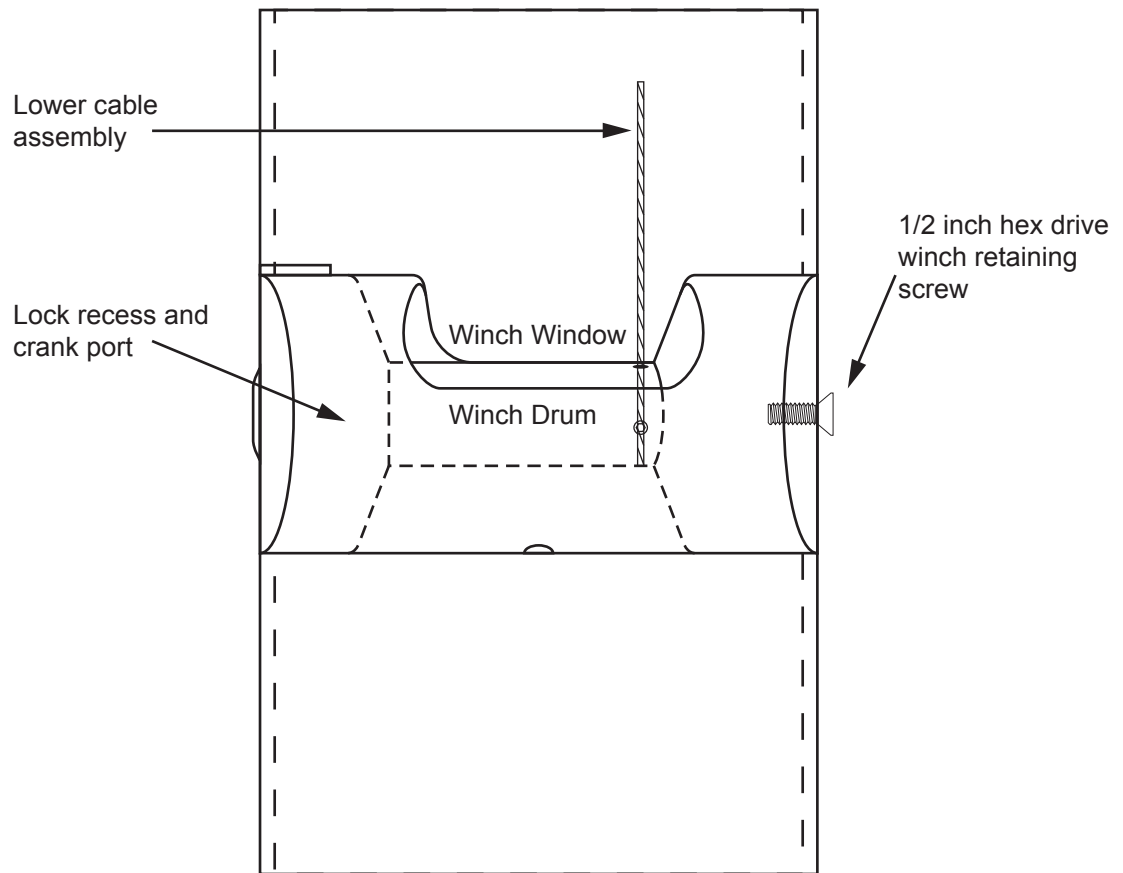
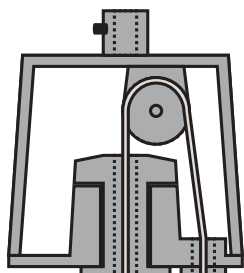
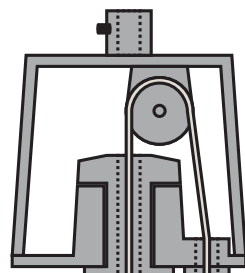
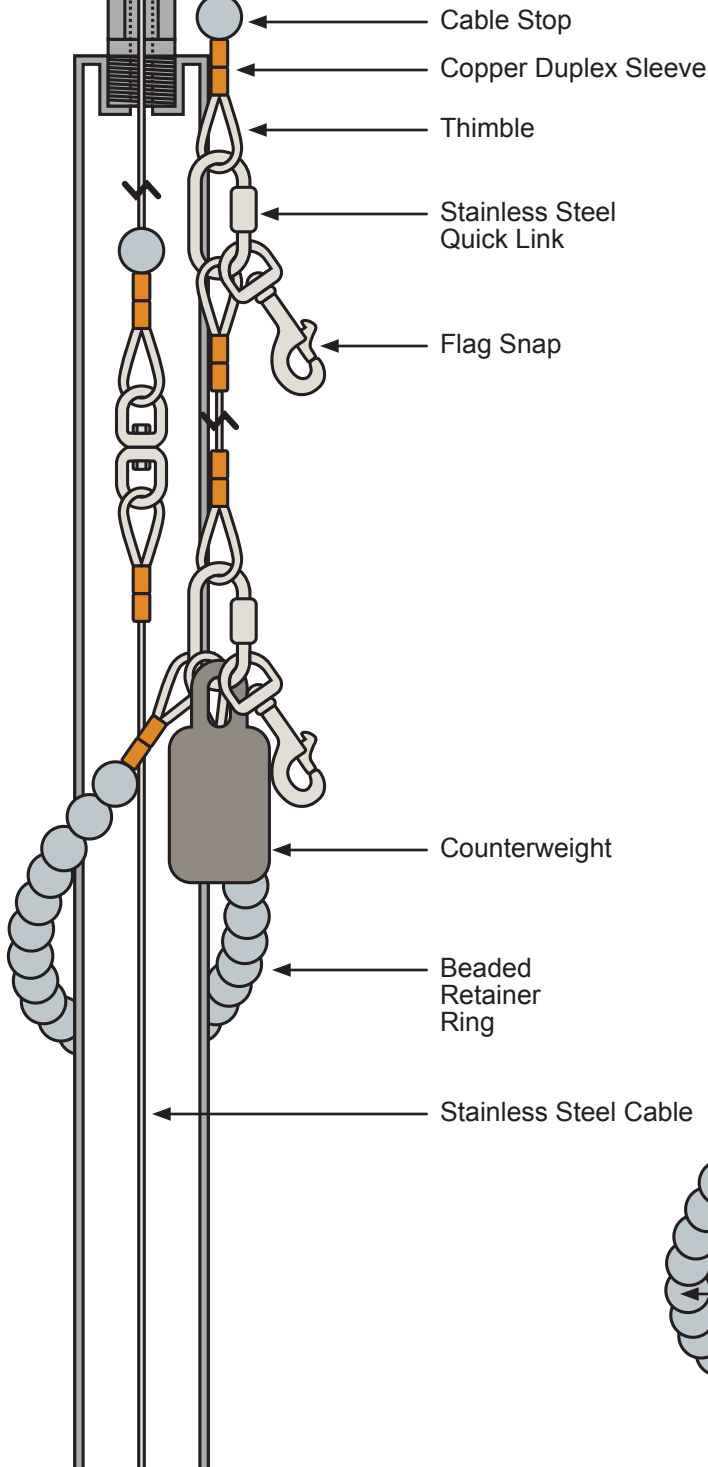


ILLUSTRATION #6



STANDARD FLAG ARRANGEMENT



DELUXE FLAG ARRANGEMENT

