

FRANCIS M. GOMEZ
PURCHASING AGENT



FRANK J. PICOZZI
MAYOR

CITY OF WARWICK
PURCHASING DIVISION
3275 POST ROAD
WARWICK, RHODE ISLAND 02886
TEL (401) 738-2013
FAX (401) 737-2364

To: All Prospective Bidders

From: Francis M. Gomez, Purchasing Agent

Date: July 13, 2023

Re: **BID# 2024-0910Oakland Beach Playground, Splashpad, & Stormwater Improvements**

Addendum #1

=====

Please be advised that the information provided comprises Addendum #1.

A *mandatory* pre-bid meeting was held on July 11, 2023. Potential bidders should note the following.

1. Only representatives/companies who were present at the pre-bid meeting are eligible to submit bids

Representatives: Amy Beausoleil, Bello Corporation/Beausoleil Brothers
Mark Hoffer, Skurka Construction
Barry Houle, Central Nurseries
Jon Key, Key Corporation
David Lucena, Lucena Brothers
Jack Milbrew, East Coast Construction
Chris Seger, Mill City Construction

2. Bid/RFP Clarifications

The RFP incorrectly stated that “The bids will be opened publicly commencing at 11:00 AM on the same day in the Lower Level Conference Room at Warwick City Hall - *Please be advised that the bids will be opened publicly commencing immediately after 11:00 AM on August 7, 2023 at 65 Centerville Road, Warwick, RI 02886, Meeting Room 2.*

Questions relating to RFP, Specifications, & Drawings - *All questions are due back by July 21, 2023 by 3:00 pm. Questions should be emailed to william.r.facente@warwickri.gov*

3. General Project Information

Construction Drawings Updated - *The drawings attached to this ADDENDUM 1 shall be incorporated into the original construction set. Please replace drawings labeled MAT-1 & GD-1 with the corresponding/attached drawings labeled MAT-1 ADDENDUM 1 and GD-1 ADDENDUM-1. Please also include drawing SK-1 ADDENDUM 1 into the set. This SK-1 was created to reduce the construction impact nearest the pedestrian ramps. The existing utility pole along with all of its guy wires will remain in place unchanged. The existing wall to its south will remain in place and undisturbed. We have revised the walkways to limit the amount of disturbance on both sides of the existing entrance way into the parking lot. There will be new vehicular rated asphalt installed in this area to facilitate proper grading of the road and intersection. The existing guardrail will remain and be cut back to the nearest post to open the entrance of the walkway. We will re-pour the end of the walkway on the east side of the parking lot entrance and incorporate a new detectable warning plate. There will be a newly painted crosswalk leading to a new handicapped ramp with detectable warning plate on the west side of the entrance. New precast concrete curbing will also be installed on the west side of the parking lot entrance to better define the entrance. The vehicular gate shown on the original documents has been relocated and resized to fit within the parameters of the new design.*

Prevailing Wage Decision - *Prevailing Wage information has been updated and is included as an attachment to this Addendum #1. This wage information replaces the previous wage information. All interested bidders must use the following General Wage Decision:*

RI20230001 Modification #8 (issued 06/30/2023)

Construction Types: Building, Heavy (Heavy and Marine) and Highway

Should you have any questions, please contact Bill Facente, Office of Housing & Community Development, at 401-921-9688.

Thank you for your interest in this project.

Addendum #1 attachments:

Drawings SK-1 ADDENDUM 1

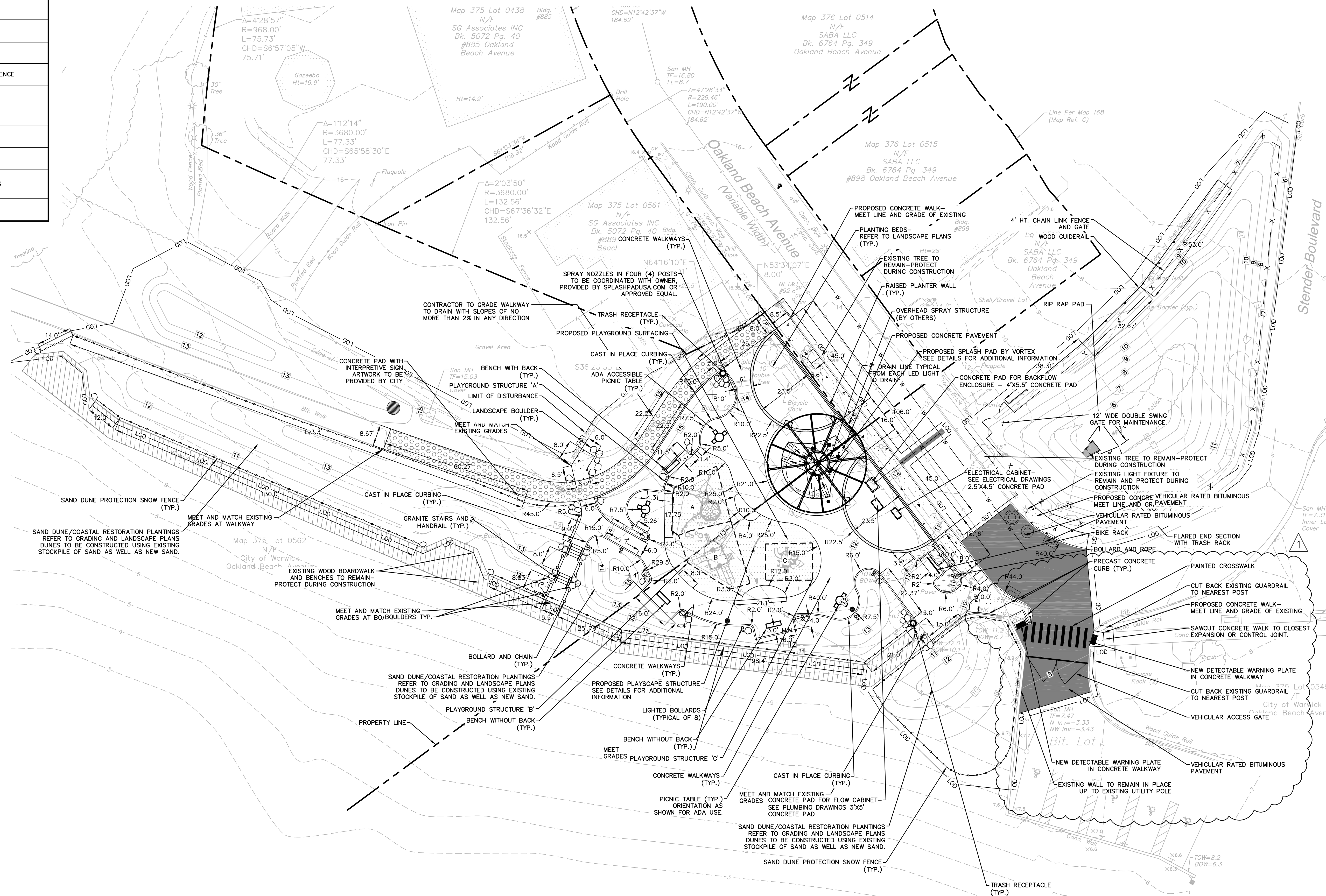
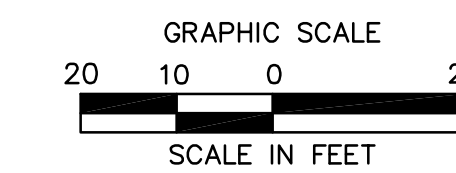
MAT-1 ADDENDUM 1

GD-1 ADDENDUM 1

General Wage Decision RI20230001 Modification #8 (issued 06/30/2023)

MATERIALS LEGEND

SYMBOL	NAME
	LIMIT OF DISTURBANCE/CONTRACT LIMIT LINE
	PROPERTY LINE
	VEHICULAR RATED ASPHALT PAVEMENT
	ASPHALT WALKWAY
	PROPOSED CONCRETE WALKWAY
	PROPOSED PLAYGROUND SURFACING
	EXISTING BOARDWALK TO REMAIN- PROTECT DURING CONSTRUCTION
	RAISED PLANTER WALLS
	LIGHTED BOLLARDS
	BOLLARD AND CHAIN
	TEMPORARY SNOW PROTECTION FENCE
	BENCHES AND TABLES
	TRASH RECEPTACLE
	BIKE RACK
	PROPOSED LANDSCAPE BOULDERS
	CHAIN LINK FENCE



OAKLAND BEACH PLAYGROUND AND SPLASHPAD OAKLAND BEACH AVENUE WARWICK, RHODE ISLAND



355 Research Parkway
Meriden, CT 06450
(203) 630-1406
(203) 630-2615 Fax

REVISIONS

No.	Date	Desc.	REVISIONS TO PEDESTRIAN RAMPS
1	07/12/2023		

Designed: D.J.C.
Drawn: J.C.W.
Reviewed: D.J.C.
Scale: 1"=20'
Project No.: 2100515
Date: June 2023
CAD File: MAT210051501

MATERIALS AND LAYOUT PLAN

Sheet No.

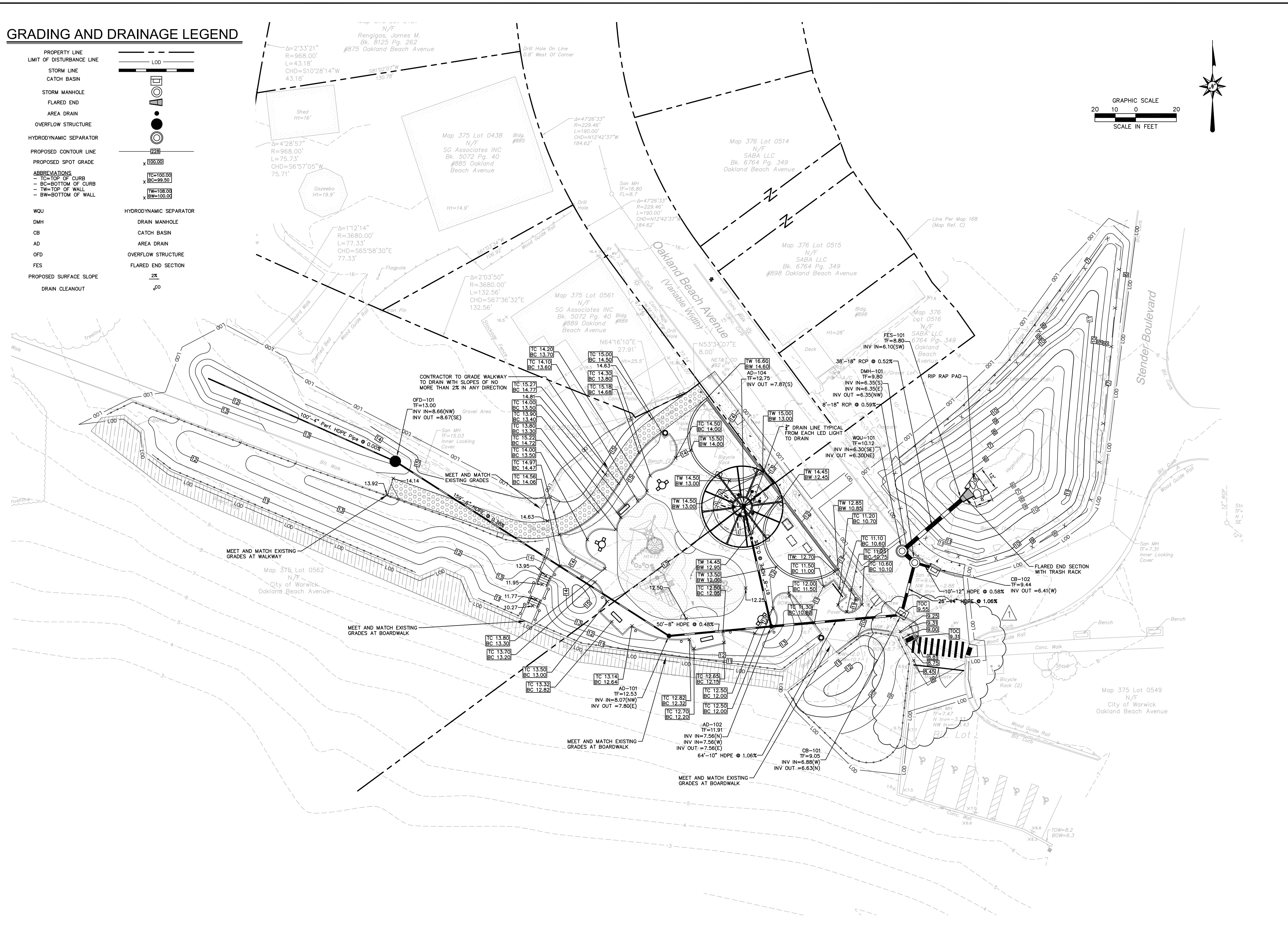
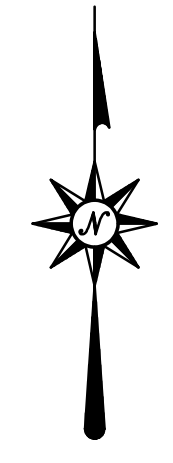
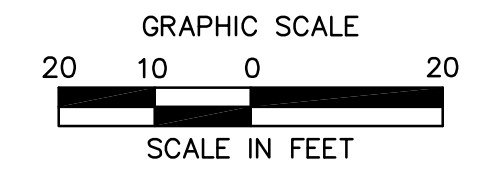
MAT-1 ADDENDUM 1

7/12/2023, JMW/ELB, G:\D\0821\WAR\00515\DWG\MAT1\0051501.DWG:MAT1_14X8.25X.C

© 2023 BL COMPANIES, INC. THESE DRAWINGS SHALL NOT BE UTILIZED BY ANY PERSON, FIRM OR CORPORATION WITHOUT THE SPECIFIC WRITTEN PERMISSION OF BL COMPANIES.

GRADING AND DRAINAGE LEGEND

- PROPERTY LINE
- LIMIT OF DISTURBANCE LINE
- STORM LINE
- CATCH BASIN
- STORM MANHOLE
- FLARED END
- AREA DRAIN
- OVERFLOW STRUCTURE
- HYDRODYNAMIC SEPARATOR
- PROPOSED CONTOUR LINE
- PROPOSED SPOT GRADE
- ABBREVIATIONS
 - TC=TOP OF CURB
 - BC=BOTTOM OF CURB
 - TW=TOP OF WALL
 - BW=BOTTOM OF WALL
- WQU HYDRODYNAMIC SEPARATOR
- DMH DRAIN MANHOLE
- CB CATCH BASIN
- AD AREA DRAIN
- OFD OVERFLOW STRUCTURE
- FES FLARED END SECTION
- PROPOSED SURFACE SLOPE 2%
- DRAIN CLEANOUT



355 Research Parkway
Meriden, CT 06450
(203) 630-1406
(203) 630-2615 Fax

OAKLAND BEACH PLAYGROUND AND SPLASHPAD OAKLAND BEACH AVENUE WARWICK, RHODE ISLAND

REVISIONS	
No.	Date
1	07/12/2023

Desc: REVISIONS TO PEDESTRIAN RAMPS

Designed	E.A.E.
Drawn	E.A.E.
Reviewed	
Scale	1"=20'
Project No.	2100515
Date	June 2023
CAD File:	GD210051501

GRADING AND DRAINAGE PLAN

Sheet No.

GD-1
ADDENDUM 1

7/12/2023 JPH/ELB CL:\00515\01\GD2100515\DWG\GD210051501.DWG (2023.06.13 14:03:25C)

Proj. No.: 210051501; Desc: GRADING AND DRAINAGE PLAN; Date: 07/12/2023; Time: 14:03:25

"General Decision Number: RI20230001 06/30/2023

Superseded General Decision Number: RI20220001

State: Rhode Island

Construction Types: Building, Heavy (Heavy and Marine) and Highway

Counties: Rhode Island Statewide.

BUILDING CONSTRUCTION PROJECTS (does not include residential construction consisting of single family homes and apartments up to and including 4 stories) HEAVY, HIGHWAY AND MARINE CONSTRUCTION PROJECTS

Note: Contracts subject to the Davis-Bacon Act are generally required to pay at least the applicable minimum wage rate required under Executive Order 14026 or Executive Order 13658. Please note that these Executive Orders apply to covered contracts entered into by the federal government that are subject to the Davis-Bacon Act itself, but do not apply to contracts subject only to the Davis-Bacon Related Acts, including those set forth at 29 CFR 5.1(a)(2)-(60).

<p>If the contract is entered into on or after January 30, 2022, or the contract is renewed or extended (e.g., an option is exercised) on or after January 30, 2022:</p>	<p>. Executive Order 14026 generally applies to the contract.</p> <p>. The contractor must pay all covered workers at least \$16.20 per hour (or the applicable wage rate listed on this wage determination, if it is higher) for all hours spent performing on the contract in 2023.</p>
<p>If the contract was awarded on or between January 1, 2015 and January 29, 2022, and the contract is not renewed or extended on or after January 30, 2022:</p>	<p>. Executive Order 13658 generally applies to the contract.</p> <p>. The contractor must pay all covered workers at least \$12.15 per hour (or the applicable wage rate listed on this wage determination, if it is higher) for all hours spent performing on that contract in 2023.</p>

The applicable Executive Order minimum wage rate will be adjusted annually. If this contract is covered by one of the Executive Orders and a classification considered necessary for performance of work on the contract does not appear on this wage determination, the contractor must still submit a conformance request.

Additional information on contractor requirements and worker protections under the Executive Orders is available at <http://www.dol.gov/whd/govcontracts>.

Modification Number	Publication Date
0	01/06/2023
1	01/13/2023
2	02/03/2023
3	03/17/2023
4	04/14/2023
5	05/12/2023
6	06/02/2023
7	06/16/2023
8	06/30/2023

ASBE0006-006 06/01/2022

	Rates	Fringes
HAZARDOUS MATERIAL HANDLER (Includes preparation, wetting, stripping, removal scrapping, vacuuming, bagging & disposing of all insulation materials, whether they contain asbestos or not, from mechanical systems).....	\$ 38.30	25.55

ASBE0006-008 09/01/2021

	Rates	Fringes
Asbestos Worker/Insulator Includes application of all insulating materials, protective coverings, coatings & finishes to all types of mechanical systems.	\$ 45.00	32.89

BOIL0029-001 01/01/2021

	Rates	Fringes
BOILERMAKER.....	\$ 45.87	29.02

BRRIO003-001 06/01/2022

	Rates	Fringes
Bricklayer, Stonemason, Pointer, Caulker & Cleaner.....	\$ 46.86	29.14

BRRIO003-002 09/01/2022

	Rates	Fringes
Marble Setter, Terrazzo Worker & Tile Setter.....	\$ 46.54	30.34

BRRIO003-003 09/01/2022

	Rates	Fringes
Marble, Tile & Terrazzo Finisher.....	\$ 38.78	29.61

* CARP0330-001 06/05/2023

	Rates	Fringes
CARPENTER (Includes Soft Floor Layer).....	\$ 42.78	30.00
Diver Tender.....	\$ 43.78	30.00
DIVER.....	\$ 55.93	30.00
Piledriver.....	\$ 41.53	29.35
WELDER.....	\$ 43.78	30.00

FOOTNOTES:

When not diving or tending the diver, the diver and diver tender shall receive the piledriver rate. Diver tenders shall receive \$1.00 per hour above the pile driver rate when tending the diver.

Work on free-standing stacks, concrete silos & public utility electrical power houses, which are over 35 ft. in height when constructed: \$.50 per hour additional.

Work on exterior concrete shear wall gang forms, 45 ft. or more above ground elevation or on setback: \$.50 per hour additional.

The designated piledriver, known as the ""monkey"": \$1.00 per hour additional.

 CARP1121-002 01/02/2023

	Rates	Fringes
MILLWRIGHT.....	\$ 41.54	30.73

 ELEC0099-002 06/01/2023

	Rates	Fringes
ELECTRICIAN.....	\$ 48.61	50.44%
Teledata System Installer.....	\$ 36.46	11.59%+15.31

FOOTNOTES:

Work of a hazardous nature, or where the work height is 30 ft. or more from the floor, except when working OSHA-approved lifts: 20% per hour additional.

Work in tunnels below ground level in combined sewer outfall: 20% per hour additional.

 ELEV0039-001 01/01/2023

	Rates	Fringes
ELEVATOR MECHANIC.....	\$ 59.36	37.335+a+b

FOOTNOTES:

a. PAID HOLIDAYS: New Years Day; Memorial Day; Independence Day; Labor Day; Veterans' Day; Thanksgiving Day; the Friday after Thanksgiving Day; and Christmas Day.

b. Employer contributes 8% basic hourly rate for 5 years or more of service of 6% basic hourly rate for 6 months to 5

years of service as vacation pay credit.

* ENGI0057-001 06/01/2023

	Rates	Fringes
Operating Engineer: (power plants, sewer treatment plants, pumping stations, tunnels, caissons, piers, docks, bridges, wind turbines, subterranean & other marine and heavy construction work)		
GROUP 1.....	\$ 45.55	29.45
GROUP 2.....	\$ 43.55	29.45
GROUP 3.....	\$ 39.17	29.45
GROUP 4.....	\$ 36.32	29.45
GROUP 5.....	\$ 42.60	29.45
GROUP 6.....	\$ 33.40	29.45
GROUP 7.....	\$ 27.40	29.45
GROUP 8.....	\$ 39.25	29.45
GROUP 9.....	\$ 43.17	29.45

a. BOOM LENGTHS, INCLUDING JIBS:

150 feet and over + \$ 2.00
 180 feet and over + \$ 3.00
 210 feet and over + \$ 4.00
 240 feet and over + \$ 5.00
 270 feet and over + \$ 7.00
 300 feet and over + \$ 8.00
 350 feet and over + \$ 9.00
 400 feet and over + \$10.00

a. PAID HOLIDAYS:

New Year's Day, President's Day, Memorial Day, July Fourth, Victory Day, Labor Day, Columbus Day, Veterans Day, Thanksgiving Day, Christmas Day. a: Any employee who works 3 days in the week in which a holiday falls shall be paid for the holiday.

a. FOOTNOTES:

Hazmat work: \$2.00 per hour additional.
 Tunnel/Shaft work: \$5.00 per hour additional.

POWER EQUIPMENT OPERATORS CLASSIFICATIONS

GROUP 1: Cranes, lighters, boom trucks and derricks

GROUP 2: Digging machine, Ross Carrier, locomotive, hoist, elevator, bidwell-type machine, shot & water blasting machine, paver, spreader, graders, front end loader (3 yds. and over), vibratory hammer & vacuum truck, roadheaders, forklifts, economobile type equipment, tunnel boring machines, concrete pump and on site concrete plants.

GROUP 3: Oilers on cranes.

GROUP 4: Oiler on crawler backhoe.

GROUP 5: Bulldozer, bobcats, skid steer loader, tractor, scraper, combination loader backhoe, roller, front end

loader (less than 3 yds.), street and mobile-powered sweeper (3-yd. capacity), 8-ft. sweeper minimum 65 HP).

GROUP 6: Well-point installation crew.

GROUP 7: Utility Engineers and Signal Persons

GROUP 8: Heater, concrete mixer, stone crusher, welding machine, generator and light plant, gas and electric driven pump and air compressor.

GROUP 9: Boat & tug operator.

 ENGI0057-002 05/01/2022

	Rates	Fringes
Power Equipment Operator (highway construction projects; water and sewerline projects which are incidental to highway construction projects; and bridge projects that do not span water)		
GROUP 1.....	\$ 36.70	29.25+a
GROUP 2.....	\$ 31.40	29.25+a
GROUP 3.....	\$ 25.40	29.25+a
GROUP 4.....	\$ 31.98	29.25+a
GROUP 5.....	\$ 35.68	29.25+a
GROUP 6.....	\$ 35.30	29.25+a
GROUP 7.....	\$ 30.95	29.25+a
GROUP 8.....	\$ 32.33	29.25+a
GROUP 9.....	\$ 34.28	29.25+a

a. FOOTNOTE: a. Any employee who works three days in the week in which a holiday falls shall be paid for the holiday.

a. PAID HOLIDAYS: New Year's Day, President's Day, Memorial Day, July Fourth, Victory Day, Labor Day, Columbus Day, Veterans Day, Thanksgiving Day & Christmas Day.

POWER EQUIPMENT OPERATOR CLASSIFICATIONS

GROUP 1: Digging machine, crane, piledriver, lighter, locomotive, derrick, hoist, boom truck, John Henry's, directional drilling machine, cold planer, reclaimer, paver, spreader, grader, front end loader (3 yds. and over), vacuum truck, test boring machine operator, veemere saw, water blaster, hydro-demolition robot, forklift, economobile, Ross Carrier, concrete pump operator and boats

GROUP 2: Well point installation crew

GROUP 3: Utlity engineers and signal persons

GROUP 4: Oiler on cranes

GROUP 5: Combination loader backhoe, front end loader (less than 3 yds.), forklift, bulldozers & scrapers and boats

GROUP 6: Roller,skid steer loaders, street sweeper

GROUP 7: Gas and electric drive heater, concrete mixer, light plant, welding machine, pump & compressor

GROUP 8: Stone crusher

GROUP 9: Mechanic & welder

* ENGI0057-003 06/01/2023

BUILDING CONSTRUCTION

	Rates	Fringes
Power Equipment Operator		
GROUP 1.....	\$ 44.82	29.90
GROUP 2.....	\$ 42.82	29.90
GROUP 3.....	\$ 42.60	29.90
GROUP 4.....	\$ 38.60	29.90
GROUP 5.....	\$ 35.75	29.90
GROUP 6.....	\$ 41.90	29.90
GROUP 7.....	\$ 41.47	29.90
GROUP 8.....	\$ 38.79	29.90

a. BOOM LENGTHS, INCLUDING JIBS:

150 ft. and over: + \$ 2.00
 180 ft. and over: + \$ 3.00
 210 ft. and over: + \$ 4.00
 240 ft. and over: + \$ 5.00
 270 ft. and over: + \$ 7.00
 300 ft. and over: + \$ 8.00
 350 ft. and over: + \$ 9.00
 400 ft. and over: + \$10.00

a. PAID HOLIDAYS: New Year's Day, President's Day, Memorial Day, July Fourth, Victory Day, Labor Day, Columbus Day, Veterans Day, Thanksgiving Day & Christmas Day. a: Any employee who works 3 days in the week in which a holiday falls shall be paid for the holiday.

a. FOOTNOTE: Hazmat work: \$2.00 per hour additional.
 Tunnel/Shaft work: \$5.00 per hour additional.

POWER EQUIPMENT OPERATORS CLASSIFICATIONS

GROUP 1: Cranes, lighters, boom trucks and derricks.

GROUP 2: Digging machine, Ross carrier, locomotive, hoist, elevator, bidwell-type machine, shot & water blasting machine, paver, spreader, front end loader (3 yds. and over), vibratory hammer and vacuum truck

GROUP 3: Telehandler equipment, forklift, concrete pump & on-site concrete plant

GROUP 4: Fireman & oiler on cranes

GROUP 5: Oiler on crawler backhoe

GROUP 6: Bulldozer, skid steer loaders, bobcats, tractor, grader, scraper, combination loader backhoe, roller, front end loader (less than 3 yds.), street and mobile powered sweeper (3 yds. capacity), 8-ft. sweeper (minimum 65 hp)

GROUP 7: Well point installation crew

GROUP 8: Heater, concrete mixer, stone crusher, welding machine, generator for light plant, gas and electric driven pump & air compressor

 IRON0037-001 03/16/2023

	Rates	Fringes
IRONWORKER.....	\$ 39.50	32.08

 LAB00271-001 11/27/2022

BUILDING CONSTRUCTION

	Rates	Fringes
LABORER		
GROUP 1.....	\$ 35.50	26.85
GROUP 2.....	\$ 35.75	26.85
GROUP 3.....	\$ 36.25	26.85
GROUP 4.....	\$ 36.50	26.85
GROUP 5.....	\$ 37.50	26.85

LABORERS CLASSIFICATIONS

GROUP 1: Laborer, Carpenter Tender, Mason Tender, Cement Finisher Tender, Scaffold Erector, Wrecking Laborer, Asbestos Removal [Non-Mechanical Systems]

GROUP 2: Asphalt Raker, Adzemen, Pipe Trench Bracer, Demolition Burner, Chain Saw Operator, Fence & Guard Rail Erector, Setter of Metal Forms for Roadways, Mortar Mixer, Pipelayer, Riprap & Dry Stonewall Builder, Highway Stone Spreader, Pneumatic Tool Operator, Wagon Drill Operator, Tree Trimmer, Barco-Type Jumping Tamper, Mechanical Grinder Operator

GROUP 3: Pre-Cast Floor & Roof Plank Erectors

GROUP 4: Air Track Operator, Hydraulic & Similar Self-Powered Drill, Block Paver, Rammer, Curb Setter, Powderman & Blaster

GROUP 5: Toxic Waste Remover

LABORERS CLASSIFICATIONS

GROUP 1: Laborer, Carpenter Tender, Mason Tender, Cement Finisher Tender, Scaffold Erector, Wrecking Laborer, Asbestos Removal [Non-Mechanical Systems]

GROUP 2: Asphalt Raker, Adzemen, Pipe Trench Bracer, Demolition Burner, Chain Saw Operator, Fence & Guard Rail Erector, Setter of Metal Forms for Roadways, Mortar Mixer, Pipelayer, Riprap & Dry Stonewall Builder, Highway Stone Spreader, Pneumatic Tool Operator, Wagon Drill Operator, Tree Trimmer, Barco-Type Jumping Tamper, Mechanical Grinder Operator

GROUP 3: Pre-Cast Floor & Roof Plank Erectors

GROUP 4: Air Track Operator, Hydraulic & Similar Self-Powered Drill, Block Paver, Rammer, Curb Setter, Powderman & Blaster

GROUP 5: Toxic Waste Remover

 LABO0271-002 11/27/2022

HEAVY AND HIGHWAY CONSTRUCTION

	Rates	Fringes
LABORER		
COMPRESSED AIR		
Group 1.....	\$ 55.40	24.15
Group 2.....	\$ 52.93	24.15
Group 3.....	\$ 42.45	24.15
FREE AIR		
Group 1.....	\$ 44.05	24.15
Free Air		
Group 1.....	\$ 46.00	24.15
FREE AIR		
Group 2.....	\$ 43.05	24.15
Free Air		
Group 2.....	\$ 45.00	24.15
FREE AIR		
Group 3.....	\$ 40.50	24.15
Free Air		
Group 3.....	\$ 42.45	24.15
LABORER		
Group 1.....	\$ 35.50	24.85
Group 2.....	\$ 35.75	24.85
Group 3.....	\$ 36.50	24.85
Group 4.....	\$ 29.00	24.85
Group 5.....	\$ 37.50	24.85
OPEN AIR CAISSON, UNDERPINNING WORK AND BORING CREW		
Bottom Man.....	\$ 41.50	24.15
Top Man & Laborer.....	\$ 35.60	24.15
TEST BORING		
Driller.....	\$ 41.95	24.15
Laborer.....	\$ 41.95	24.15

LABORER CLASSIFICATIONS

GROUP 1: Laborer; Carpenter tender; Cement finisher tender; Wrecking laborer; Asbestos removers [non-mechanical systems]; Plant laborer; Driller in quarries

GROUP 2: Adzeperson; Asphalt raker; Barcotype jumping tamper; Chain saw operators; Concrete and power buggy operator; Concrete saw operator; Demolition burner; Fence and guard rail erector; Highway stone spreader; Laser beam operator; Mechanical grinder operator; Mason tender; Mortar mixer; Pneumatic tool operator; Riprap and dry stonewall builder; Scaffold erector; Setter of metal forms for roadways; Wagon drill operator; Wood chipper operator; Pipelayer; Pipe trench bracer

GROUP 3: Air track drill operator; Hydraulic and similar powered drills; Brick paver; Block paver; Rammer and curb setter; Powderperson and blaster

GROUP 4: Flagger & signaler

GROUP 5: Toxic waste remover

LABORER - COMPRESSED AIR CLASSIFICATIONS

GROUP 1: Mucking machine operator, tunnel laborer, brake

person, track person, miner, grout person, lock tender, gauge tender, miner: motor person & all others in compressed air

GROUP 2: Change house attendant, powder watchperson, top person on iron

GROUP 3: Hazardous waste work within the ""HOT"" zone

LABORER - FREE AIR CLASSIFICATIONS

GROUP 1: Grout person - pumps, brake person, track person, form mover & stripper (wood & steel), shaft laborer, laborer topside, outside motorperson, miner, conveyor operator, miner welder, heading motorperson, erecting operator, mucking machine operator, nozzle person, rodperson, safety miner, shaft & tunnel, steel & rodperson, mole nipper, concrete worker, form erector (wood, steel and all accessories), cement finisher (this type of work only), top signal person, bottom person (when heading is 50' from shaft), burner, shield operator and TBM operator

GROUP 2: Change house attendant, powder watchperson

GROUP 3: Hazardous waste work within the ""HOT"" zone

LABORER CLASSIFICATIONS

GROUP 1: Laborer; Carpenter tender; Cement finisher tender; Wrecking laborer; Asbestos removers [non-mechanical systems]; Plant laborer; Driller in quarries

GROUP 2: Adzeperson; Asphalt raker; Barcotype jumping tamper; Chain saw operators; Concrete and power buggy operator; Concrete saw operator; Demolition burner; Fence and guard rail erector; Highway stone spreader; Laser beam operator; Mechanical grinder operator; Mason tender; Mortar mixer; Pneumatic tool operator; Riprap and dry stonewall builder; Scaffold erector; Setter of metal forms for roadways; Wagon drill operator; Wood chipper operator; Pipelayer; Pipe trench bracer

GROUP 3: Air track drill operator; Hydraulic and similar powered drills; Brick paver; Block paver; Rammer and curb setter; Powderperson and blaster

GROUP 4: Flagger & signaler

GROUP 5: Toxic waste remover

LABORER - COMPRESSED AIR CLASSIFICATIONS

GROUP 1: Mucking machine operator, tunnel laborer, brake person, track person, miner, grout person, lock tender, gauge tender, miner: motor person & all others in compressed air

GROUP 2: Change house attendant, powder watchperson, top person on iron

GROUP 3: Hazardous waste work within the ""HOT"" zone

LABORER - FREE AIR CLASSIFICATIONS

GROUP 1: Grout person - pumps, brake person, track person,

form mover & stripper (wood & steel), shaft laborer, laborer topside, outside motorperson, miner, conveyor operator, miner welder, heading motorperson, erecting operator, mucking machine operator, nozzle person, rodperson, safety miner, shaft & tunnel, steel & rodperson, mole nipper, concrete worker, form erector (wood, steel and all accessories), cement finisher (this type of work only), top signal person, bottom person (when heading is 50' from shaft), burner, shield operator and TBM operator

GROUP 2: Change house attendant, powder watchperson

GROUP 3: Hazardous waste work within the "HOT" zone

PAIN0011-005 06/01/2023

	Rates	Fringes
PAINTER		
Brush and Roller.....	\$ 37.62	22.85
Epoxy, Tanks, Towers, Swing Stage & Structural Steel.....	\$ 39.62	22.85
Spray, Sand & Water Blasting.....	\$ 40.62	22.85
Taper.....	\$ 38.37	22.85
Wall Coverer.....	\$ 38.12	22.85

PAIN0011-006 06/01/2022

	Rates	Fringes
GLAZIER.....	\$ 40.78	23.40

FOOTNOTES:

SWING STAGE: \$1.00 per hour additional.

PAID HOLIDAYS: Labor Day & Christmas Day.

PAIN0011-011 06/01/2023

	Rates	Fringes
Painter (Bridge Work).....	\$ 56.25	23.45

PAIN0035-008 06/01/2011

	Rates	Fringes
Sign Painter.....	\$ 24.79	13.72

PLAS0040-001 06/03/2019

BUILDING CONSTRUCTION

	Rates	Fringes
CEMENT MASON/CONCRETE FINISHER...	\$ 36.00	27.15

FOOTNOTE: Cement Mason: Work on free swinging scaffolds under 3 planks width and which is 20 or more feet above ground and any offset structure: \$.30 per hour additional.

 PLAS0040-002 07/01/2019

HEAVY AND HIGHWAY CONSTRUCTION

	Rates	Fringes
CEMENT MASON/CONCRETE FINISHER...	\$ 32.85	22.20

 PLAS0040-003 07/01/2019

	Rates	Fringes
PLASTERER.....	\$ 37.55	27.50

 PLUM0051-002 02/27/2023

	Rates	Fringes
Plumbers and Pipefitters.....	\$ 48.89	31.75

 ROOF0033-004 06/01/2023

	Rates	Fringes
ROOFER.....	\$ 42.95	30.00

 SFRI0669-001 04/01/2023

	Rates	Fringes
SPRINKLER FITTER.....	\$ 47.55	32.27

 SHEE0017-002 12/01/2020

	Rates	Fringes
Sheet Metal Worker.....	\$ 38.58	36.73

 TEAM0251-001 05/01/2022

HEAVY AND HIGHWAY CONSTRUCTION

	Rates	Fringes
TRUCK DRIVER		
GROUP 1.....	\$ 28.46	32.10+A+B+C
GROUP 2.....	\$ 28.61	\$ 32.10+A+B+C
GROUP 3.....	\$ 28.66	\$ 32.10+A+B+C
GROUP 4.....	\$ 28.71	\$ 32.10+A+B+C
GROUP 5.....	\$ 28.81	\$ 32.10+A+B+C
GROUP 6.....	\$ 29.21	\$ 32.10+A+B+C
GROUP 7.....	\$ 29.41	\$ 32.10+A+B+C
GROUP 8.....	\$ 28.91	\$ 32.10+A+B+C
GROUP 9.....	\$ 29.16	\$ 32.10+A+B+C
GROUP 10.....	\$ 28.96	\$ 32.10+A+B+C

FOOTNOTES:

A. Paid Holidays: New Year's Day, Memorial Day, Independence Day, Labor Day, Thanksgiving Day and Christmas Day, plus Presidents' Day, Columbus Day, Veteran's Day & V-J Day, providing the employee has worked at least one day in the calendar week in which the holiday falls.

B. Employee who has been on the payroll for 1 year or more but less than 5 years and has worked 150 Days during the last year of employment shall receive 1 week's paid vacation; 5 to 10 years - 2 weeks' paid vacation; 10 or more years - 3 week's paid vacation.

C. Employees on the seniority list shall be paid a one hundred dollar (\$100.00) bonus for every four hundred (400) hours worked, up to a maximum of five hundred dollars (\$500.00)

All drivers working on a defined hazard material job site shall be paid a premium of \$2.00 per hour over applicable rate.

TRUCK DRIVER CLASSIFICATIONS

GROUP 1: Pick-up trucks, station wagons, & panel trucks

GROUP 2: Two-axle on low beds

GROUP 3: Two-axle dump truck

GROUP 4: Three-axle dump truck

GROUP 5: Four- and five-axle equipment

GROUP 6: Low-bed or boom trailer.

GROUP 7: Trailers when used on a double hook up (pulling 2 trailers)

GROUP 8: Special earth-moving equipment, under 35 tons

GROUP 9: Special earth-moving equipment, 35 tons or over

GROUP 10: Tractor trailer

WELDERS - Receive rate prescribed for craft performing operation to which welding is incidental.

=====

Note: Executive Order (EO) 13706, Establishing Paid Sick Leave for Federal Contractors applies to all contracts subject to the Davis-Bacon Act for which the contract is awarded (and any solicitation was issued) on or after January 1, 2017. If this contract is covered by the EO, the contractor must provide employees with 1 hour of paid sick leave for every 30 hours they work, up to 56 hours of paid sick leave each year. Employees must be permitted to use paid sick leave for their own illness, injury or other health-related needs, including preventive care; to assist a family member (or person who is like family to the employee) who is ill, injured, or has other health-related needs, including preventive care; or for reasons resulting from, or to assist a family member (or person who is like family to the employee) who is a victim of, domestic violence, sexual assault, or stalking. Additional information on contractor requirements and worker protections under the EO is available at <https://www.dol.gov/agencies/whd/government-contracts>.

Unlisted classifications needed for work not included within the scope of the classifications listed may be added after award only as provided in the labor standards contract clauses (29CFR 5.5 (a) (1) (ii)).

The body of each wage determination lists the classification and wage rates that have been found to be prevailing for the cited type(s) of construction in the area covered by the wage determination. The classifications are listed in alphabetical order of ""identifiers"" that indicate whether the particular rate is a union rate (current union negotiated rate for local), a survey rate (weighted average rate) or a union average rate (weighted union average rate).

Union Rate Identifiers

A four letter classification abbreviation identifier enclosed in dotted lines beginning with characters other than ""SU"" or ""UAVG"" denotes that the union classification and rate were prevailing for that classification in the survey. Example: PLUM0198-005 07/01/2014. PLUM is an abbreviation identifier of the union which prevailed in the survey for this classification, which in this example would be Plumbers. 0198 indicates the local union number or district council number where applicable, i.e., Plumbers Local 0198. The next number, 005 in the example, is an internal number used in processing the wage determination. 07/01/2014 is the effective date of the most current negotiated rate, which in this example is July 1, 2014.

Union prevailing wage rates are updated to reflect all rate changes in the collective bargaining agreement (CBA) governing this classification and rate.

Survey Rate Identifiers

Classifications listed under the ""SU"" identifier indicate that no one rate prevailed for this classification in the survey and the published rate is derived by computing a weighted average rate based on all the rates reported in the survey for that classification. As this weighted average rate includes all rates reported in the survey, it may include both union and non-union rates. Example: SULA2012-007 5/13/2014. SU indicates the rates are survey rates based on a weighted average calculation of rates and are not majority rates. LA indicates the State of Louisiana. 2012 is the year of survey on which these classifications and rates are based. The next number, 007 in the example, is an internal number used in producing the wage determination. 5/13/2014 indicates the survey completion date for the classifications and rates under that identifier.

Survey wage rates are not updated and remain in effect until a new survey is conducted.

Union Average Rate Identifiers

Classification(s) listed under the UAVG identifier indicate that no single majority rate prevailed for those classifications; however, 100% of the data reported for the classifications was union data. EXAMPLE: UAVG-OH-0010 08/29/2014. UAVG indicates that the rate is a weighted union

average rate. OH indicates the state. The next number, 0010 in the example, is an internal number used in producing the wage determination. 08/29/2014 indicates the survey completion date for the classifications and rates under that identifier.

A UAVG rate will be updated once a year, usually in January of each year, to reflect a weighted average of the current negotiated/CBA rate of the union locals from which the rate is based.

WAGE DETERMINATION APPEALS PROCESS

1.) Has there been an initial decision in the matter? This can be:

- * an existing published wage determination
- * a survey underlying a wage determination
- * a Wage and Hour Division letter setting forth a position on a wage determination matter
- * a conformance (additional classification and rate) ruling

On survey related matters, initial contact, including requests for summaries of surveys, should be with the Wage and Hour National Office because National Office has responsibility for the Davis-Bacon survey program. If the response from this initial contact is not satisfactory, then the process described in 2.) and 3.) should be followed.

With regard to any other matter not yet ripe for the formal process described here, initial contact should be with the Branch of Construction Wage Determinations. Write to:

Branch of Construction Wage Determinations
Wage and Hour Division
U.S. Department of Labor
200 Constitution Avenue, N.W.
Washington, DC 20210

2.) If the answer to the question in 1.) is yes, then an interested party (those affected by the action) can request review and reconsideration from the Wage and Hour Administrator (See 29 CFR Part 1.8 and 29 CFR Part 7). Write to:

Wage and Hour Administrator
U.S. Department of Labor
200 Constitution Avenue, N.W.
Washington, DC 20210

The request should be accompanied by a full statement of the interested party's position and by any information (wage payment data, project description, area practice material, etc.) that the requestor considers relevant to the issue.

3.) If the decision of the Administrator is not favorable, an interested party may appeal directly to the Administrative Review Board (formerly the Wage Appeals Board). Write to:

Administrative Review Board
U.S. Department of Labor
200 Constitution Avenue, N.W.
Washington, DC 20210

4.) All decisions by the Administrative Review Board are final.

=====

END OF GENERAL DECISIO"