

PATRICIA A. PESHKA  
PURCHASING AGENT



SCOTT AVEDISIAN  
MAYOR

**CITY OF WARWICK**  
PURCHASING DIVISION  
3275 POST ROAD  
WARWICK, RHODE ISLAND 02886  
TEL (401) 738-2000 EXT. 6240  
FAX (401) 737-2364

To: All Prospective Bidders

From: Patricia A. Peshka, Purchasing Agent

Date: January 3, 2017

Re: Bid #2017-206 East Natick Sign Program

**Addendum #1 Clarification**

---

Please be advised that this memorandum comprises **Addendum #1.**

**Attached please find Clarification for the East Natick Sign Program.**

Should you have any questions,  
please contact Kevin Sullivan, Program Coordinator, 401-738-2000 Ext. 6371

Thank you for your interest in this project.

## ADDENDUM 1 – Clarification: East Natick Sign Program

### A. Sign Material:

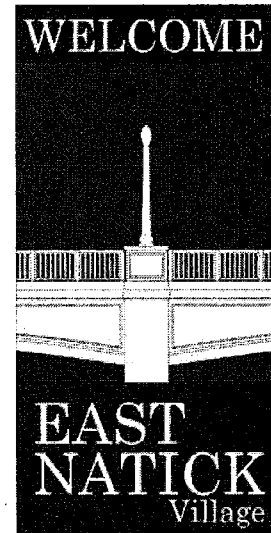
1. These are *rigid signs*, specified to be composed of 6mm thick layered sign product comprised of two-sided aluminum skins bonded to a solid polyethylene core (MaxMetal, or equal).
2. Refer to Specification Section 10400, Part 2.01

### B. Sign Schedule:

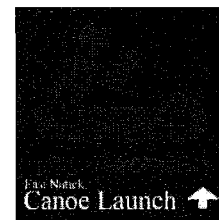
1. East Natick Sign: Provide nine (9) East Natick signs. (Three of these signs will not be installed, and will be placed in storage.)
2. Canoe / Kayak launch sign: Provide eight (8) Canoe / Kayak launch signs. (Two of these signs will not be installed, and will be placed in storage, with the adhesive arrow *not adhered*.)
3. Refer to Specification Section 10400, Part 2.01

### C. Sign Graphics:

1. East Natick Sign: A digital graphic file will be provided for the 18” by 36” East Natick sign, which will have the following appearance:



2. Canoe / Kayak directional sign: A digital graphic file will be provided for the 12” by 12” canoe / kayak directional sign, which will have the following appearance:



3. Refer to Specification Section 10400, Part 1.04

D. Mounting Hardware Schedule:

1. East Natick Signs:

a. Provide nine (9) pairs of cast aluminum banner arms and nine (9) pairs of cast aluminum clamp-on mounts, as manufactured by Antique Street Lamps (or approved equal). Color: black. These arms are specified for "clamp-on mounting" (Model Number BAC19 BACDxx XXH4). (Three of these pairs will not be used, and will be placed in storage).

b. Provide nine (9) sets of four-corner brackets appropriate for mounting the rigid sign panels to the banner arms. Color: black.

*c. Cut Sheets of the Banner Arms are attached. See the product identified by the red rectangle. The Antique Street Lamps clamp-on mounts are specified to have the appropriate radius to attach to the existing street lamps. However, the arms must be adapted to allow mounting of the specified rigid sign panel. Therefore, corner brackets are to be manufactured and welded in place on the arms. The black finish shall be repaired. Contractor shall verify the clamp radius prior to order.*

2. Refer to Specification Section 10400, Part 2.02

E. Canoe Launch Sign Posts

1. Provide six (6) pressure treated 4x4 wood mounting posts, six feet in length for installation of the Canoe / Kayak signs. Pressure treatment shall be suitable for ground contact. Corners to be rounded. Provide 30 degree sloped-top cut at the top of the post.

2. Refer to Specification Section 10400, Part 2.02

F. Installation of the East Natick Signs:

1. East Natick Signs shall be mounted on the *street side* of the existing lamp posts.

2. If traffic is expected to be diverted, a police detail will be required.

END OF SECTION

(Sign Bracket Cut Sheets Follow)

# Banner Arms Cast Aluminum

## SPECIFICATIONS

### DESCRIPTION

The banner arms shall consist of a round, extruded aluminum pipe and a removable cast aluminum end cap. Bottom eyebolts and banner arms with breakaway couplings, are optional and recommended because of the wind load from the banner.

### CONSTRUCTION

The banner arm shall be welded to a mounting plate or a post clamp. All welding shall be per ANSI/AWS D1.2-90. All welders shall be certified per ANSI/AWS D1.2-90 Section 5.

### MATERIALS

The end caps shall be, copper free, cast aluminum produced from certified ASTM 356.1 ingot per ASTM B-179-95a or ASTM B26-95. The banner arm, mounting plate and post clamp shall be aluminum, ASTM 6061 alloy, heat treated to a T6 temper. All hardware shall be stainless steel.

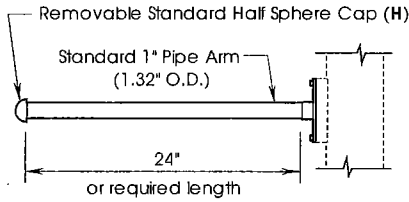
### INSTALLATION

The bolt-on banner arm shall bolt to a mounting channel provided on the side of the post with four stainless steel screws. Eyebolts shall screw into the post or clamp on. All clamp-on mountings shall clamp around the post, secured with four 3/8" hex head bolts. (Post dia. at mounting point must be specified.) A minimum mounting height of 10 feet is recommended for the bottom banner arm. (Arms are not designed for pedestrian interference.) (For information on specifying orientation and mounting heights see "Orientation Guide" in the back of the Accessories section of catalog.) (Banners to be provided by others.)

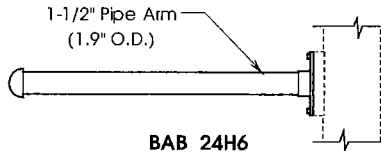
### DIMENSIONS

The banner arms shall be available in 1.05", 1.32", 1.66" or 1.9" O.D. and to the specified length.

For finish specifications and color options see "Finish" section in catalog.



**BAB 24H4**  
(banner arm; bolt-on,  
24" lg., 1" Ø)



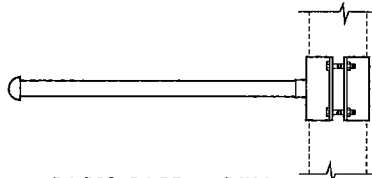
**BAB 24H6**  
(banner arm, bolt-on,  
24" lg., 1.5" Ø)

#### Other size Banner Arms Available:

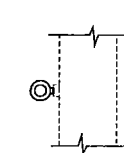
**BAB XXH3**  
(banner arm, XX" lg.,  
.75" pipe (1.05" O.D.))

**BAB XXH5**  
(banner arm, XX" lg.,  
1.25" pipe (1.66" O.D.))

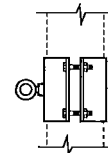
## OTHER MOUNTING OPTIONS



**BAC19 BACDxx 24H4**  
(1 banner arm with clamp-on mounting,  
xx = clamp dia., 24" lg. x 1" Ø arm)

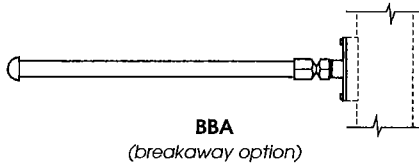


**EBB**  
(eyebolt mounted  
to post for securing  
banner bottom)



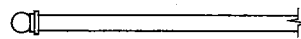
**EBC19 EBCDxx**  
(eyebolt with clamp  
on mounting for secur-  
ing banner bottom)

## OTHER OPTIONS

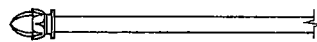


**BBA**  
(breakaway option)

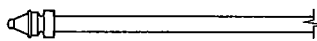
### End Caps



**B**  
(Ball end cap)

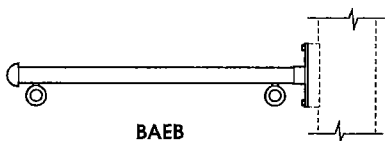


**A**  
(Acorn end cap)

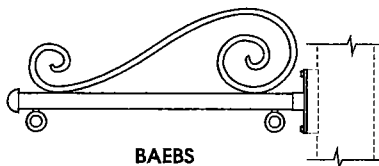


**R**  
(Raleigh end cap)

### Decorative Options



**BAEB**  
(two eyebolts on arm)



**BAEBs**  
(decorative scroll & two  
eyebolts on arm)

**NOTE:** Banner arms can add substantial wind loading to the post you select. Please coordinate the correct post size and style with the factory.

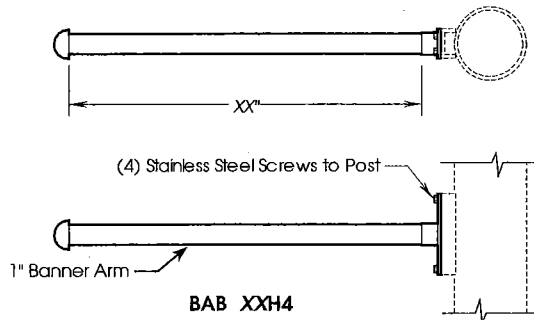
# ANTIQUÉ Street Lamps

2011-B W. Rundberg Ln. • Austin, TX 78758  
Ph (512) 977-8444 • Fax (512) 977-9622

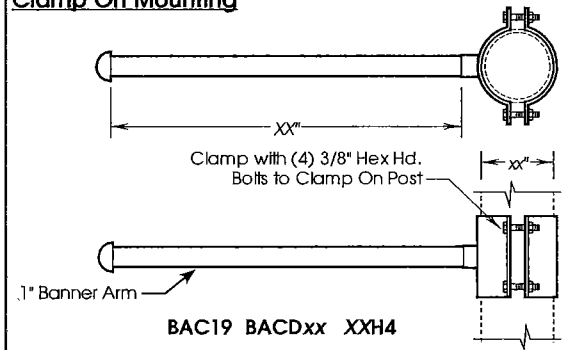
# Banner Arms Cast Aluminum

## MOUNTING DETAILS

### Bolt-On Mounting

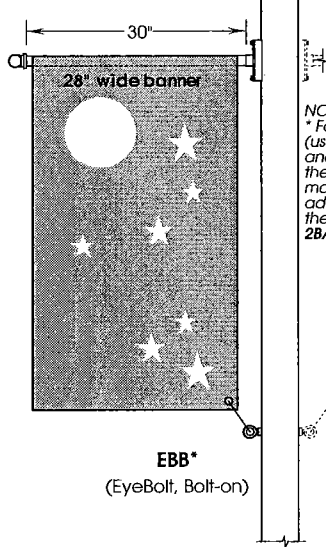


### Clamp On Mounting



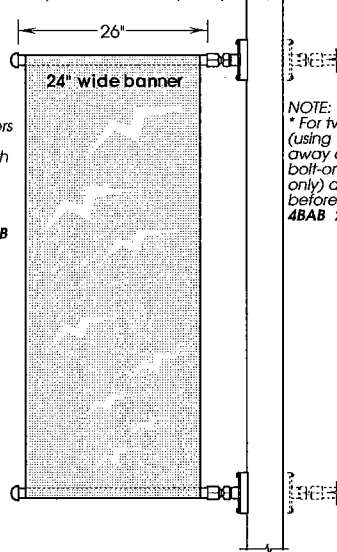
## SUGGESTED BANNER ARM USAGE

**BAB 30B4\***  
(Banner Arm, Bolt-on - 30" lg., Ball end cap, 1" Ø arm)



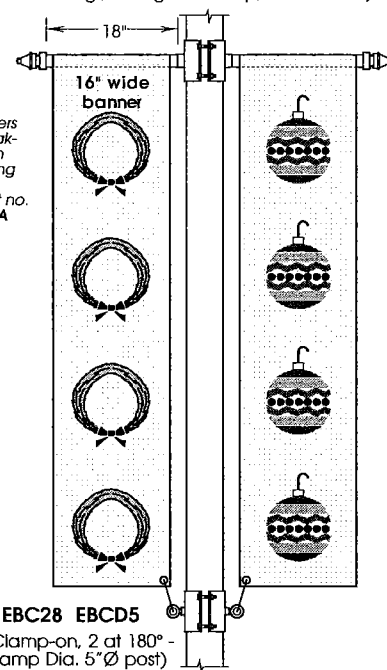
**NOTE:**  
\* For two banners (using the arm and eyebolt with the bolt-on mounting only) add a 2 before the part no. **2BAB 30B4 2EBB**

**2BAB 26H4 BBA\***  
(2 Banner Arms, Bolt-on - 26" lg., Half sphere end cap, 1" Ø - Breakaway Banner Arm option)



**NOTE:**  
\* For two banners (using the break-away arms with bolt-on mounting only) add a 4 before the part no. **4BAB 26H4 BBA**

**BAC28 BACD5 18R5**  
(Banner Arms, Clamp-on, 2 arms at 180° - Banner Arm Clamp Dia. for 5" post-18" lg., Raleigh end cap, 1.25" Ø arm)



**NOTE:**  
\* For information on specifying orientation and mounting heights see **Orientation Guide** in the back of the Accessories section in the catalog. A minimum mounting height of 10" is recommended for the bottom banner arm.  
• Banners not furnished by Antique Street Lamps.

## ORDERING INFORMATION

Choose the **boldface** catalog nomenclature that best suits your needs and write it on the appropriate line.

Example: **BAC19 BACD4 18H4 BAEB EBC19 EBCD4 ANBK**

Banner Arms (type, qty)	BA Clamp Dia. <sup>2,3</sup>	Length <sup>1</sup>	End Cap	Options	Eyebolts (type, qty)	EB Clamp Dia. <sup>2,3</sup>
<b>Bolt-ons<sup>1,2</sup></b>	(clamp-ons only)				<b>Bolt-ons<sup>1,2</sup></b>	(clamp-ons only)
<b>BAB</b> 1 Banner Arm	<b>BACD3</b> 3" Ø	12	<b>H</b> Half Sphere	<b>BBA</b> Breakaway Arm	<b>EBB</b> 1 Eyebolt	<b>EBCD3</b> 3" Ø
<b>2BAB</b> 2 Banner Arms	<b>BACD3-1/2</b> 3-1/2" Ø	18	<b>B</b> Ball Cap	<b>BAEB</b> Arm w/eyebolts	<b>2EBB</b> 2 Eyebolt	<b>EBCD3-1/2</b> 3-1/2" Ø
<b>3BAB</b> 3 Banner Arms	<b>BACD4</b> 4" Ø	19	<b>A</b> Acorn Cap	<b>BAEBS</b> Arm w/eyebolts and Scroll	<b>3EBB</b> 3 Eyebolt	<b>EBCD4</b> 4" Ø
<b>4BAB</b> 4 Banner Arms	<b>BACD4-1/2</b> 4-1/2" Ø	20	<b>R</b> Raleigh Cap		<b>4EBB</b> 4 Eyebolt	<b>EBCD4-1/2</b> 4-1/2" Ø
<b>6BAB</b> 6 Banner Arms	<b>BACD5</b> 5" Ø	24				<b>EBCD5</b> 5" Ø
<b>8BAB</b> 8 Banner Arms	<b>BACD5-1/2</b> 5-1/2" Ø	25				<b>EBCD5-1/2</b> 5-1/2" Ø
<b>Clamp-ons</b>	<b>BACD6</b> 6" Ø	26	<b>Arm dia.</b>		<b>Clamp-ons</b>	<b>EBCD6</b> 6" Ø
<b>one set</b>	<b>BACD6-1/2</b> 6-1/2" Ø	26	3 3/4" Ø		<b>one set</b>	<b>EBCD6-1/2</b> 6-1/2" Ø
<b>two sets</b>	<b>BACD7</b> 7" Ø	28	4 1" Ø		<b>two sets</b>	<b>EBCD7</b> 7" Ø
<b>BAC19</b> 1 Arm	<b>BACD7-1/2</b> 7-1/2" Ø	30	5 1-1/4" Ø		<b>EBC19</b> 1 Eyebolt	<b>EBCD7-1/2</b> 7-1/2" Ø
<b>BAC28</b> 2 Arms @ 180°	<b>BACD7</b> 7" Ø	28	6 1-1/2" Ø		<b>EBC28</b> 2 bolts @ 180°	<b>EBCD7</b> 7" Ø
<b>BAC29</b> 2 Arms @ 90°	<b>BACD7-1/2</b> 7-1/2" Ø	30			<b>EBC29</b> 2 bolts @ 90°	<b>EBCD7-1/2</b> 7-1/2" Ø
<b>BAC39</b> 3 Arms @ 90°	<b>BACDTBS</b> Ø to be specified	36			<b>EBC32</b> 3 bolts @ 120°	<b>EBCDTBS</b> Ø to be specified
<b>BAC49</b> 4 Arms @ 90°					<b>EBC39</b> 3 bolts @ 90°	
					<b>EBC49</b> 4 bolts @ 90°	
						<b>Finish<sup>4</sup></b>
						<b>ANBK</b> Black
						<b>ANDB</b> Dark Bronze
						<b>ANDG</b> Dark Green
						<b>ANVG</b> Verde Green
						<b>ANPP</b> Prime Painted
						<b>CM</b> Custom Match
						<b>CS</b> Custom Select RAL colors

**NOTES:**  
1. For information on specifying orientation and mounting heights see the **Orientation Guide** in the back of the Accessories section in the catalog.  
2. A minimum mounting height of 10" is recommended for the bottom banner arm.  
3. For clamp dia. take post dia. and round up to the nearest 1/2".  
4. For finish and color options see **Finish** section in catalog.

**ANTIQUÉ Street Lamps**

2011-B W. Rundberg Ln. • Austin, TX 78758 • Ph (512) 977-8444